

Wesley Chapel Public Input Meeting
July 26, 2011 – 6 p.m.
Post-Public Input Meeting Report

The purpose of this document is to summarize specific district map-drawing suggestions from the Wesley Chapel public meeting on July 26, 2011. Therefore, the comments in this document will focus on specific instructions provided by Florida residents participating in these meetings.

Other comments that were either not specific on how to draw a map or that were editorial in nature will not be included in this document. For all of the comments in their entirety, please see the meeting transcript, video and/or podcast via www.floridaredistricting.org.

The following encapsulates comments from persons who spoke and/or submitted written comments for the Wesley Chapel public meeting. To make it clear, these are the public's suggestions. This document does not necessarily reflect the opinion of the Florida Legislature.

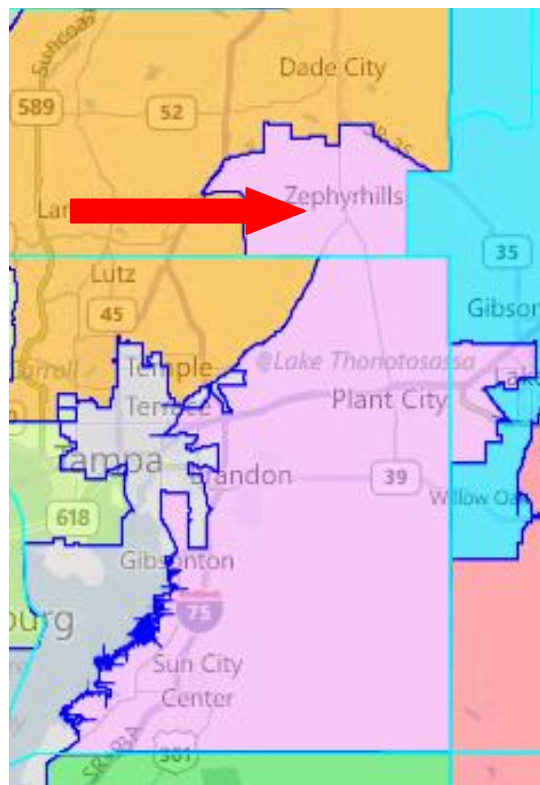
Specific Map-Drawing Testimony-Wesley Chapel Public Meeting

July 26, 2011

Cent-6: Remove the City of Zephyrhills from Senate District 10

Description: The current districts don't adequately serve the people. Zephyrhills is thrown in with Polk and Hillsborough in a Senate seat. It is the only portion of Pasco County that is in the district.¹

Visual: Senate District 10 (in pink) currently looks like this (with a red arrow pointing to Zephyrhills):



Policy Issues:

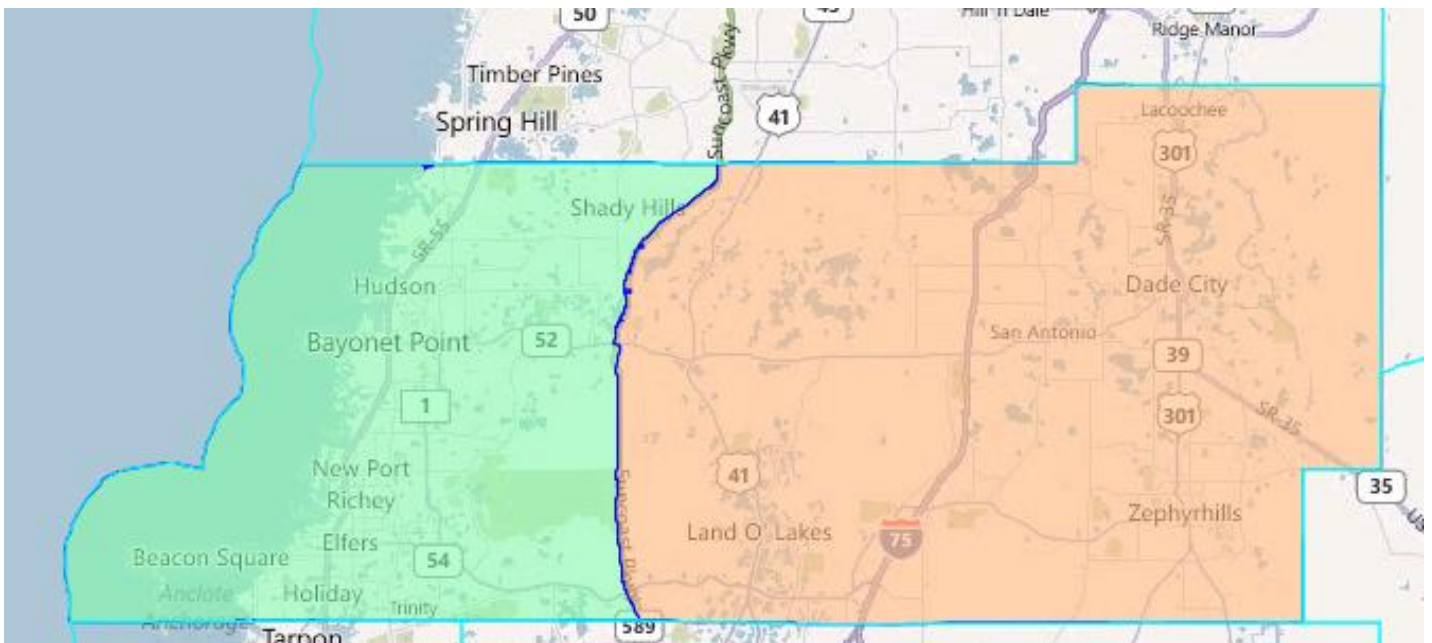
- With a population of 565,921, the current Senate District 10 needs to be reduced by 95,889 people in order to meet the ideal population for a district. Reducing the Pasco County portion of the district would still leave the district too large by 22,097 people, so more communities would need to be removed from it.

¹ Cliff McDuffie, Mayor of Zephyrhills

Cent-7: Communities in Pasco County in Relation to the State House Map

Description: East Pasco and West Pasco are very different. The east is more rural and agricultural, while the West is more urban and has an exploding population.² The Interstate or the Suncoast Parkway could be used to divided East and West Pasco.³ The cities of Zephyrhills, Wesley Chapel and Dade City should be kept together in an Eastern Pasco House seat.⁴ Pasco County should have an Eastern, Central and Western House seat.⁵ If divisions need to be made between districts, use the Suncoast Parkway.⁶ East and West Pasco are different flavors and we need representatives who understand our issues.⁷ Three different House seats in Pasco is important and they should be West, Central, East.⁸ When you look at East and West Pasco, they have nothing in common and no shared transportation corridors. US 19 and US 301 are very different for the economics of the sections of the county.⁹

Visual: Dividing Pasco County into two house districts using the Suncoast Parkway would look like this:

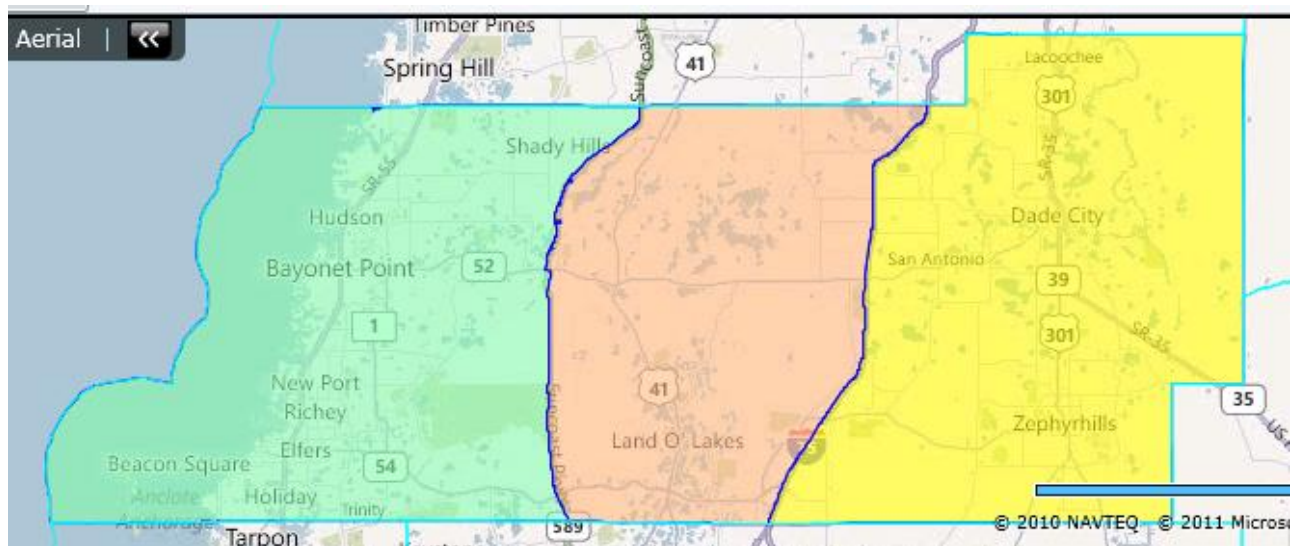


Policy Issues:

-
- ² Anthony Lister of San Antonio
 - ³ Ed Blommel of Dade City
 - ⁴ Justina Cracchiolo of Wesley Chapel
 - ⁵ Steve VanGorch of Dade City
 - ⁶ Sandy Graves of Land O'Lakes
 - ⁷ Tom Hanlon of Dade City
 - ⁸ Suzanne Fulford of Land O'Lakes
 - ⁹ Hutch Brock of Dade City

- Both districts created above are over the ideal population for the House district. The Western district (District 1 in the example) by 97,005 people and the Eastern district (District 2 in the example) by 54,338. With a population of 464,697, Pasco County could be divided between three House districts, two of which could be entirely within the county, while the third could have the vast majority of its population within the county and a portion of the population of another county.
- VTDs would need to be split in order to use the Suncoast Parkway as the dividing line between the two districts.

Visual: Splitting Pasco County into three House districts using the Suncoast Parkway and Interstate 75 as the dividing lines between East, Central and West, would look like this:



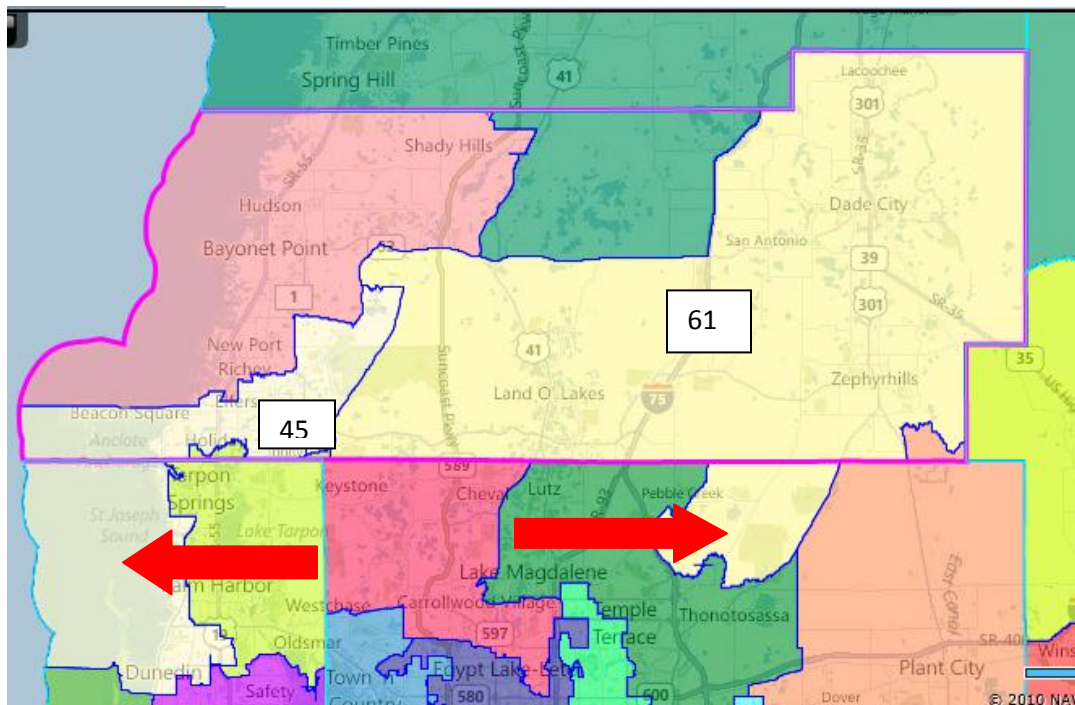
Policy Issues:

- The Eastern district (District 1 in both examples) remains the same size as the previous example, which was over the ideal population by 97,005.
- The Central district (District 2 in this example) has a population of 83,698 and would need to have more communities added to it in order to meet the ideal population.
- The Western district (District 4 in this example) now has a population of 127,317, which is short by 29,360 for the ideal population.
- No other corridors or other geographic boundaries were provided in the testimony as a way to divide Eastern, Central and Western Pasco County. More clarification may be needed in order to adjust the dividing lines in the example above.

Cent-8: House Districts 45 and 61 and their Non-Pasco Population and Which Neighboring County Should be Combined With a House District When it Needs More Population

Description: We should draw districts to the Northern counties of Pasco if more population is needed.¹⁰ Please don't connect us in Pasco with Hillsborough.¹¹ Move the Corcoran seat up and out of Pinellas and get Weatherford out of Hillsborough.¹² Coastal Citrus, Hernando and Pasco Counties have more in common with each than with the inland portions of those counties. Same with Tampa.¹³ District 61 should move East to Land O'Lakes and out of Hillsborough County.¹⁴ House District 61 should be in Eastern and Central Pasco and not in Hillsborough County.¹⁵ Wesley Chapel is a diverse and growing community. We work a lot of New Tampa and should be linked with them in a district.¹⁶ The Eastern side of Pasco is agricultural and has a lot in common with Sumter and Hernando Counties and parts of Hillsborough.¹⁷ The people of Wesley Chapel commute to New Tampa and have a lot in common with them.¹⁸

Visual: Currently, House Districts 45 and 61 look like this (with red arrows pointing to their non-Pasco County portions):



¹⁰ Rachel O'Conner of Wesley Chapel
¹¹ Sandy Graves of Land O'Lakes
¹² Bill Bunting of Hudson
¹³ Gary Willner of Trinity
¹⁴ Peter Hanzel of Wesley Chapel
¹⁵ Karen Hanzel of Wesley Chapel
¹⁶ Alison Morcno of Wesley Chapel
¹⁷ Robert Nathe of Dade City
¹⁸ Jeff Novofny of Wesley Chapel

Policy Issues:

- With a population of 146,618, House District 45 needs to gain 10,059 people in order to meet the ideal population for a district. If it were to lose its Pinellas County portion, it would need to gain 67,880 people to meet the ideal population.
- With a population of 242,396, House District 61 needs to lose 85,719 people in order to meet the ideal population for a district. If it were to lose its Hillsborough County portion, it would still need to lose 62,805 to meet the ideal population.

Cent-9: One or Two Senate Districts in Pasco County

Description: Pasco County has two distinct communities, one in the East and one in the West. We should have two Senate districts in Pasco County, with the Suncoast Parkway being the dividing line between the two.¹⁹²⁰ Pasco County needs two Senate seats.²¹ East and West Pasco are very distinct communities. Use US 41 or the Suncoast Parkway as the dividing line that will give us representatives that will represent our interests.²² Pasco County should have its own Senate seat. If it has to be more than one, make it two and not three.²³

Visual: Splitting Pasco County into two Senate districts using the Suncoast Parkway as the dividing line between East and West would look like this:

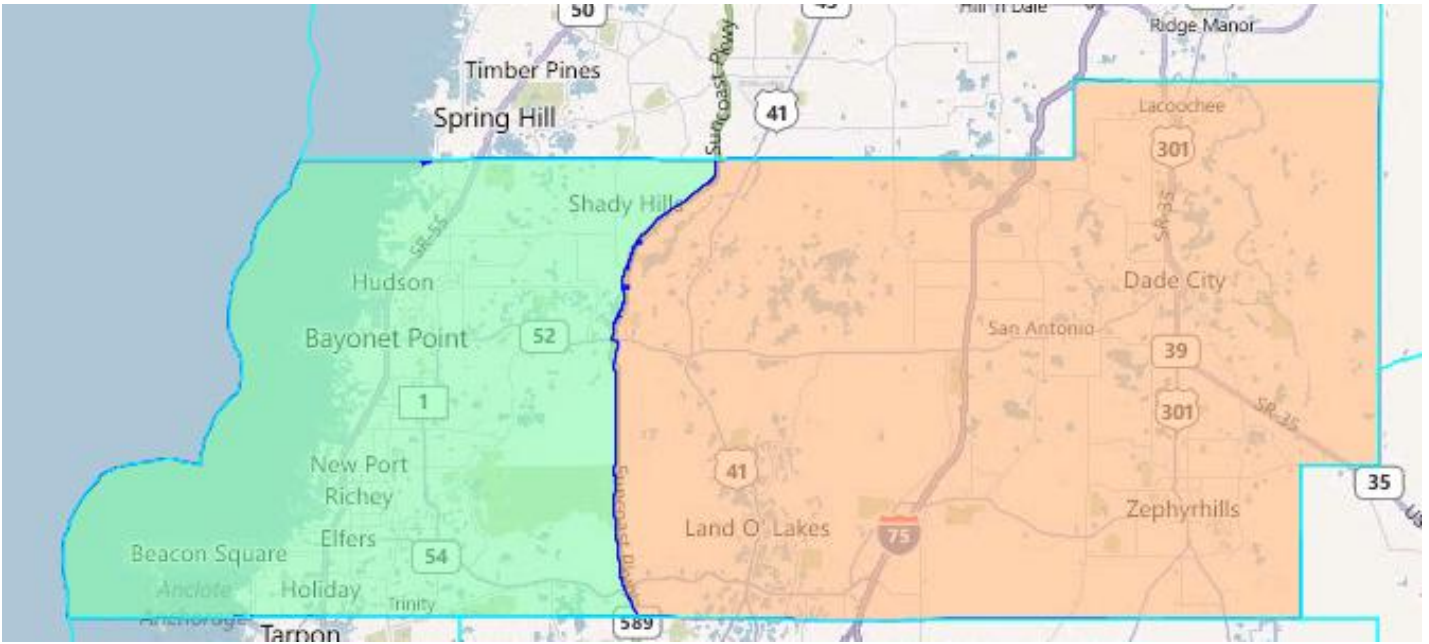
¹⁹ Ronnie Deese of Dade City

²⁰ Steve Van Gorch of Dade City

²¹ Jim Mathieu of Port Richey

²² Jarrod Scharber of Dade City

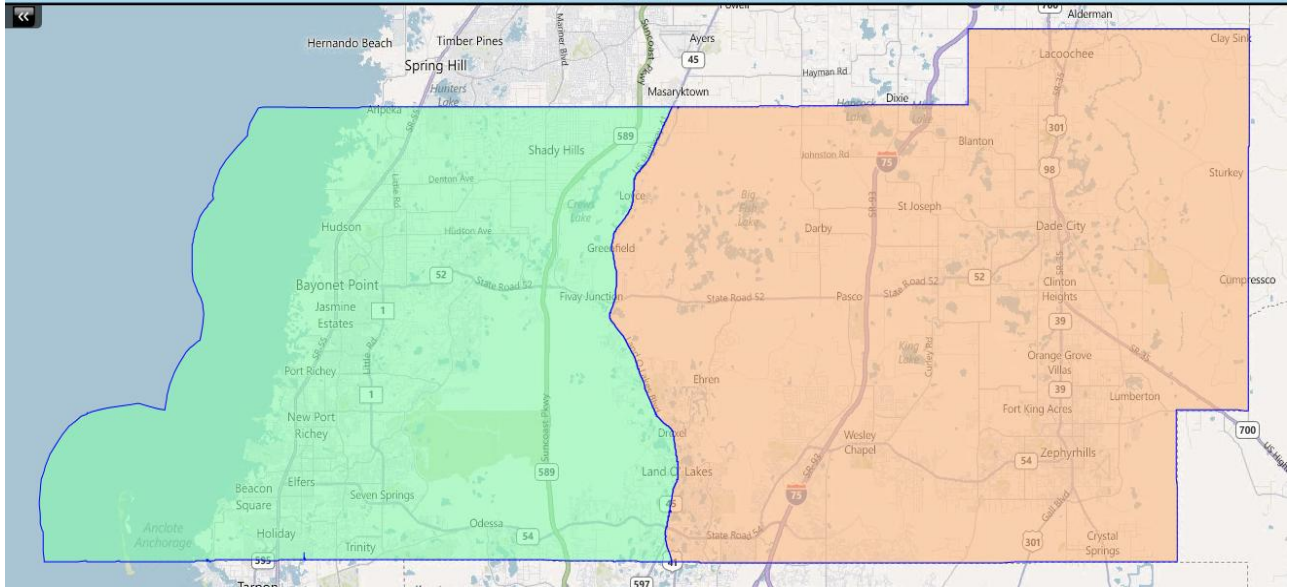
²³ Sandy Graves of Land O'Lakes



Policy Issues:

- Both Senate districts created above would need more communities from a neighboring county or counties added to them in order to meet the ideal population for a district. The Western district (District 1 in the example) would need 259,008 more people and the Eastern district (District 2 in the example) would need 216,359 more people.
- In order for the districts to line up with the Suncoast Parkway as the dividing line, VTDs would have to be split.

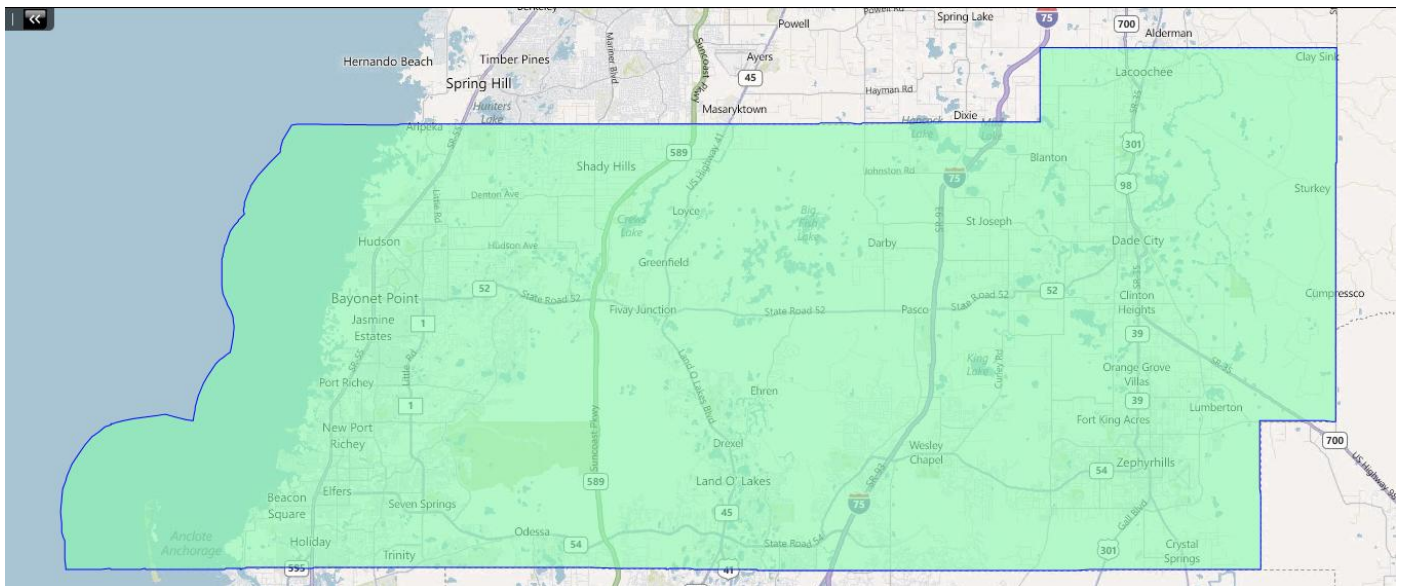
Visual: Splitting Pasco County into two Senate districts using US-41 as the dividing line between East and West would look like this:



Policy Issues:

- Similarly to the previous example, neither district meets the ideal population for a Senate district. The Eastern district is now 192,229 people short while the Western district is now 283,138 short.
- VTDs were split again in order to have the districts line up with US-41 as the dividing line.

Visual: Having all of Pasco County in a Senate District would look like this:



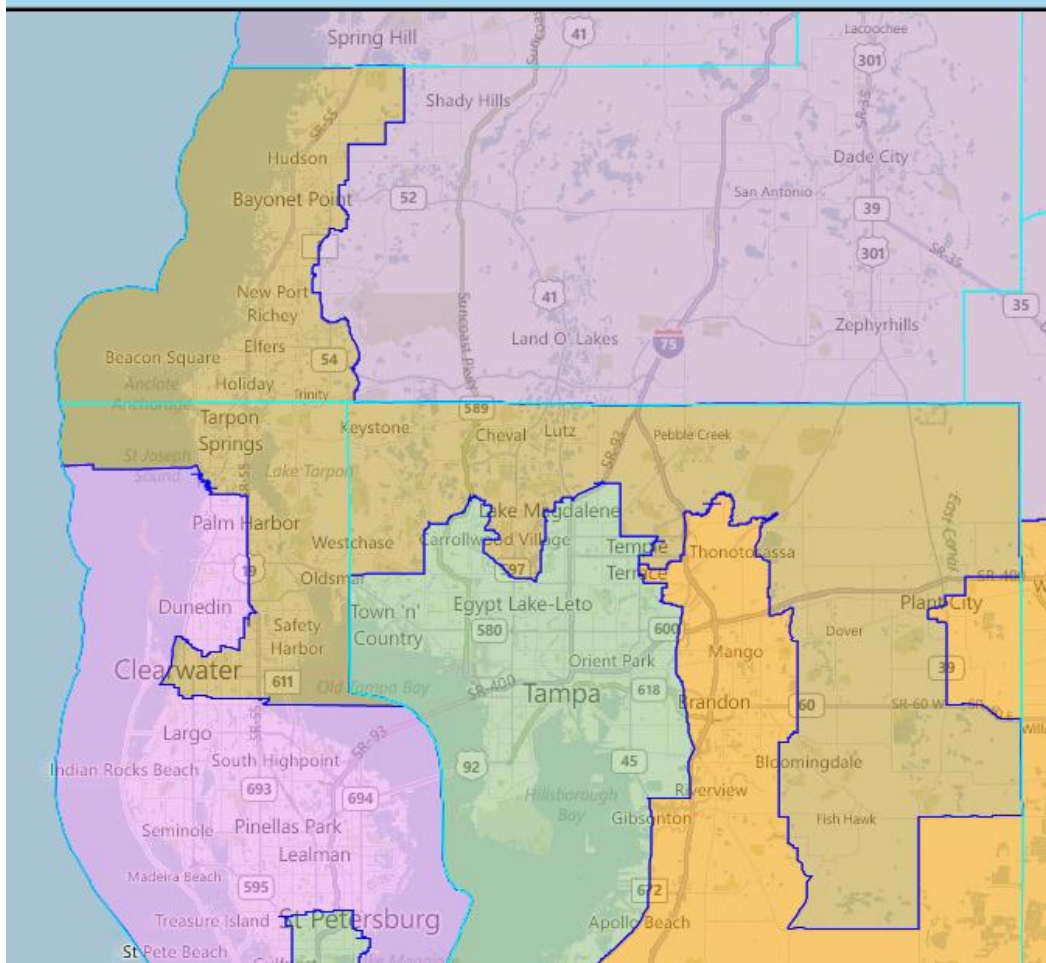
Policy Issues:

- With a population of 464,697, Pasco County is just 5,335 people short of the ideal population for a senate district. That is 1.1% deviation from the ideal population.

Cent-10: Move Congressional District 9 out of Hillsborough County and More Into East Pasco County

Description: Move Bilirakis out of Hillsborough and into East Pasco.²⁴

Visual: Currently, Congressional District 9 looks like this (in brown):



²⁴ Bill Bunting of Hudson

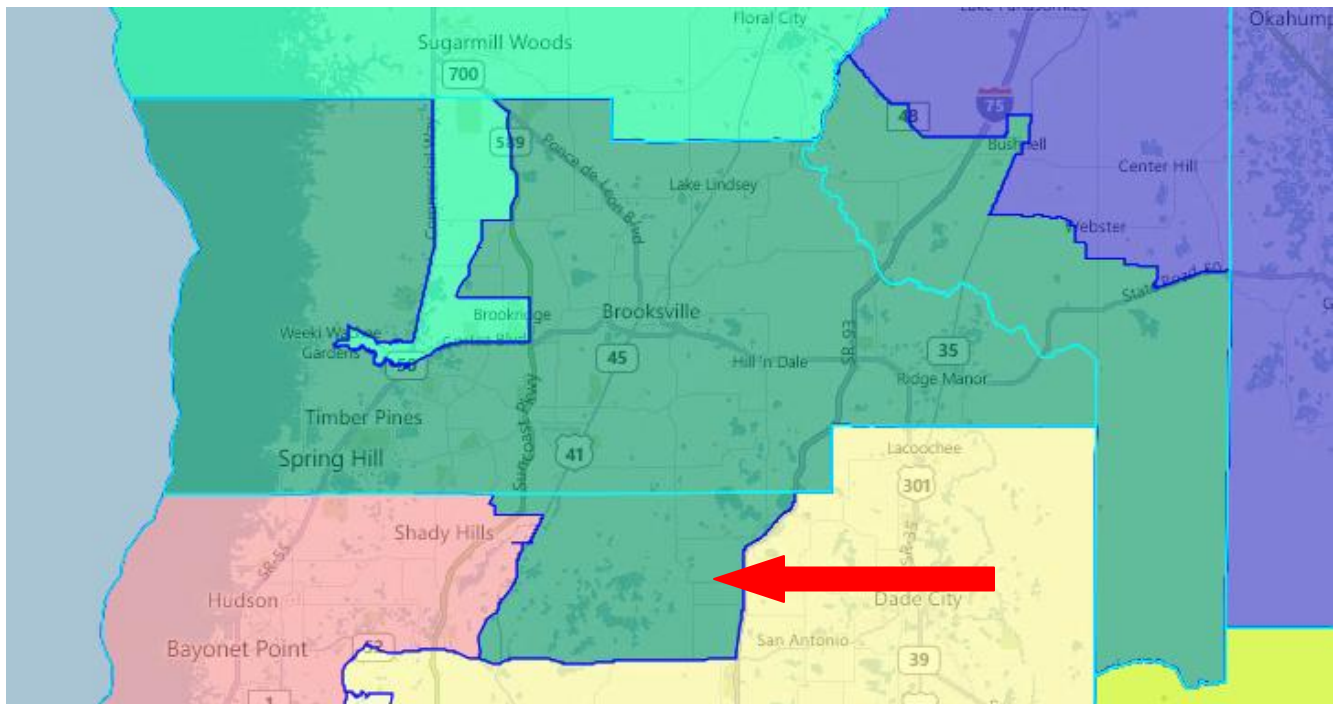
Policy Issues:

- Currently, Congressional District 9 has a population of 753,549, which is too large for the ideal population of a district. If the Hillsborough County portion of the district was removed, the district is then short of the ideal population by 285,321 people. The district could then include more of Pasco County as it pushes East.
- If all of the Hillsborough County portion of the district were to be removed, another district or districts would need to absorb that population.
- If the district were to push more East into Pasco County, then adjustments would need to be made to Congressional District 5, which is currently 233,189 over the ideal population.

Cent-11: Remove Pasco County from House District 44

Description: There are three Pasco County precincts that are in a legislative seat that is based in Hernando County. Please move that seat out of Pasco County.²⁵

Visual: Currently, House District 44 looks like this (in dark green with a red arrow pointing to the Pasco County portion):



²⁵ Bill Bunting of Hudson

Policy Issues:

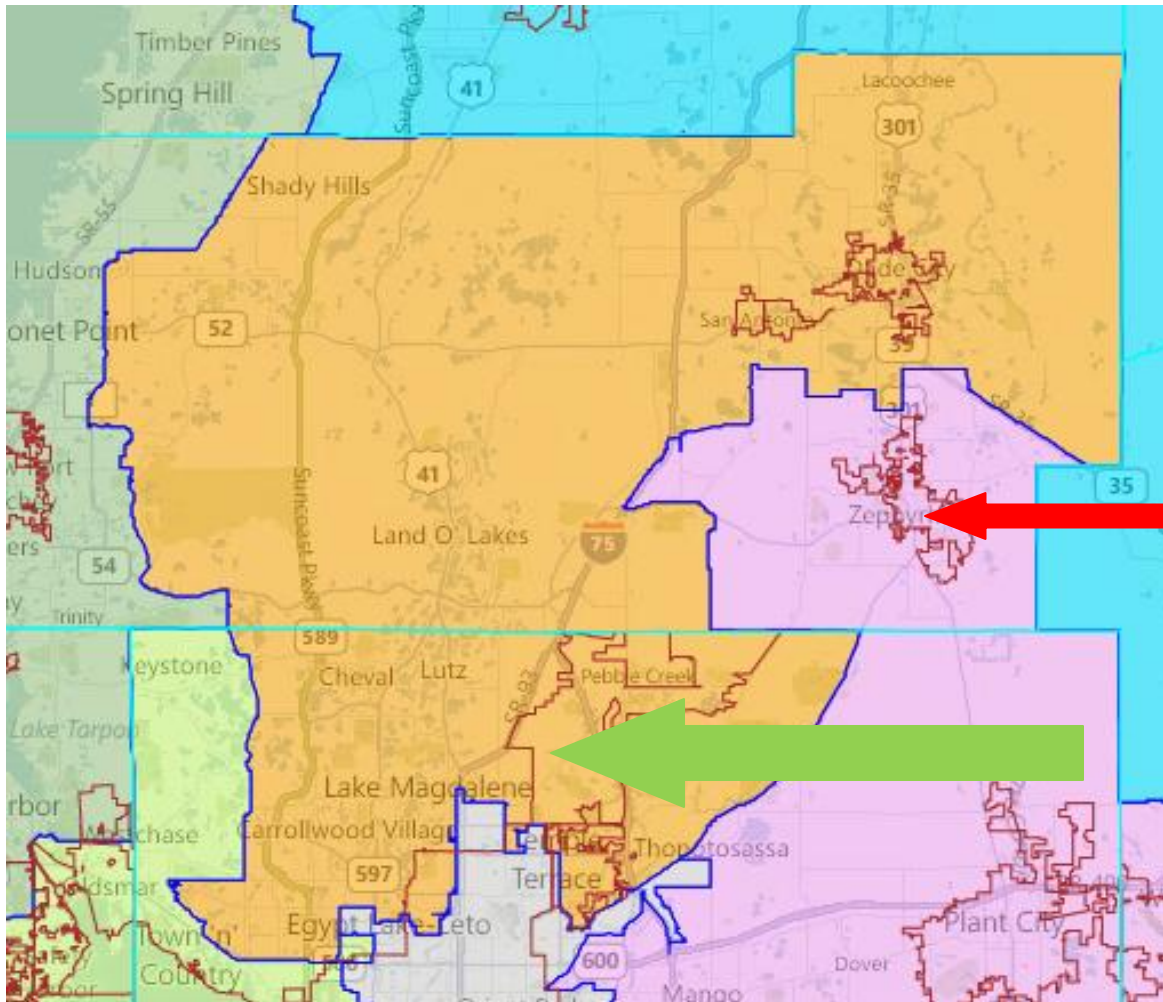
- In House District 44, there are four precincts from the 2010 elections that are in Pasco County. The district is currently too large for the ideal population of a house district by 14,975 people. By removing the Pasco County portion of the district, it is still too large by 11,097 and more communities would need to be removed from it in order to meet the ideal population.
- If the Pasco County portion were to be removed from House District 44, then District 46 and/or District 61 would need to absorb that population. Currently, District 46 is 13,905 under the ideal population while District 61 is 85,719 people over.

Cent-12: Add the City of Zephyrhills to Senate District 12 and remove the Hillsborough County Portion of it

Description: District 12 should include Zephyrhills. Take the parts of Hillsborough County that are in the district and remove them to make it balanced.²⁶

Visual: Currently, Senate District 12 looks like this (in brown, with a red arrow pointing to the City of Zephyrhills and a green arrow pointing to the district's Hillsborough County portion):

²⁶ Peter Hanzel of Wesley Chapel



Policy Issues:

- Currently, Senate District 12 is over the ideal population by 61,927 people. By removing Hillsborough County from the district and add the City of Zephyrhills, the population of the district goes to being 266,908 under the ideal population, so more communities would need to be added to it.
- By adding the City of Zephyrhills to the district, some contiguity issue would arise that need to be addressed, since the city boundaries do not currently touch the boundary of Senate District 12. Taking this action would also cause the split of some VTDs.