

Wauchula Public Input Meeting
July 26, 2011 – 8 p.m.
Post-Public Input Meeting Report

The purpose of this document is to summarize specific district map-drawing suggestions from the Wauchula public meeting on July 26, 2011. Therefore, the comments in this document will focus on specific instructions provided by Florida residents participating in these meetings.

Other comments that were either not specific on how to draw a map or that were editorial in nature will not be included in this document. For all of the comments in their entirety, please see the meeting transcript, video and/or podcast via www.floridaredistricting.org.

The following encapsulates comments from persons who spoke and/or submitted written comments for the Lakeland public meeting. To make it clear, these are the public's suggestions. This document does not necessarily reflect the opinion of the Florida Legislature.

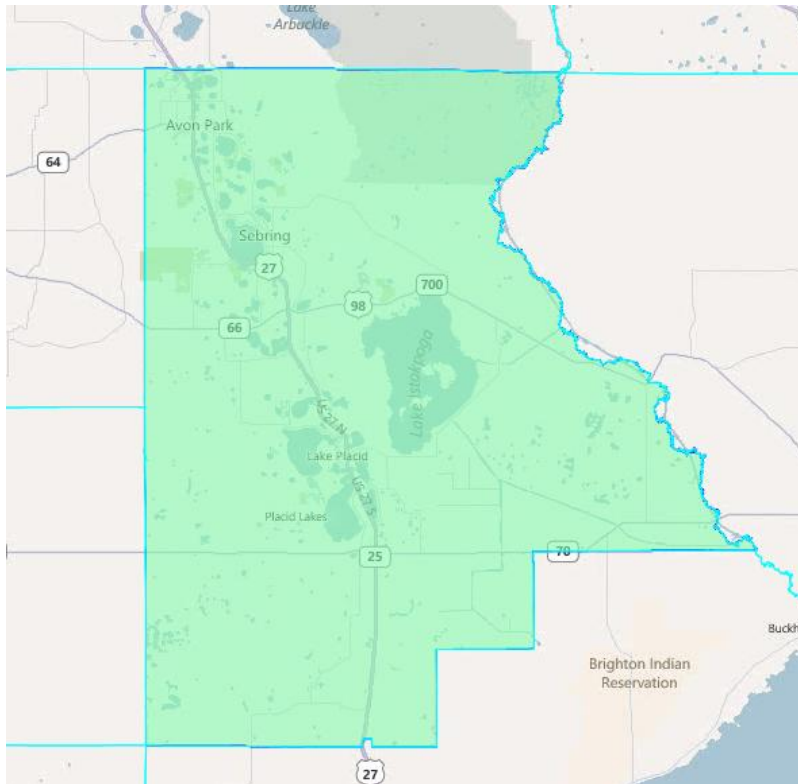
Specific Map-Drawing Testimony-Wauchula Public Hearings

July 26, 2011

Cent-3: Keep Highlands County Whole

Description: Please keep Highlands County whole in one Congressional, State Senate and State House district.¹ Please keep it the way that it is, where Highlands is whole in all three maps.²

Visual: Keeping Highlands County whole look like this:



Policy Issues:

- With a population of 98,786, more communities would need to be added to Highlands County in order to meet the ideal population for a House, Senate or Congressional district.

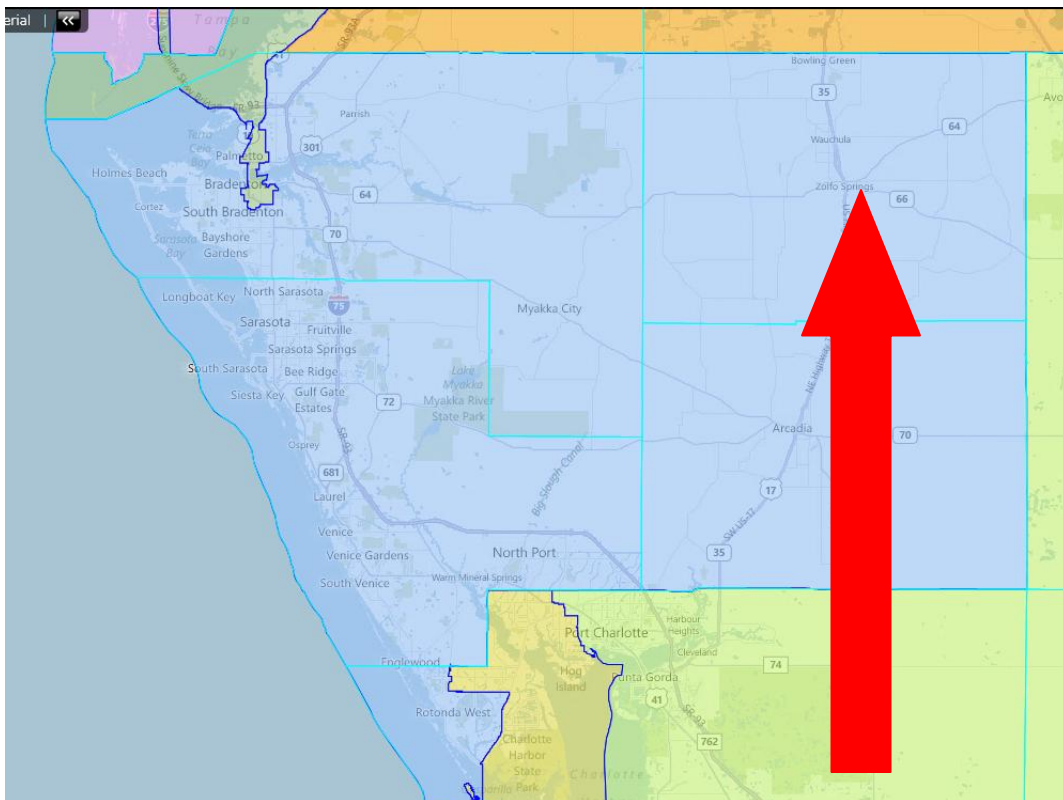
¹ Joe Campbell, Supervisor of Elections, Highlands County

² John Drezinski of Avon Park

Cent-4: Connect Hardee County with Inland Counties Instead of Connecting it with Coastal Counties

Description: Hardee County has been connected to coastal districts and that isn't the best for our residents. Connect us with inland counties such as Polk, Hendry, Highlands, DeSoto and Glades. They are more agricultural-based like we are. We don't have the same interests as a coastal county and we don't have the population to affect elections there.³

Visual: The best example of this is current Congressional District 13 (in blue), which looks like this (with a red arrow pointing to Hardee County):



Policy Issues:

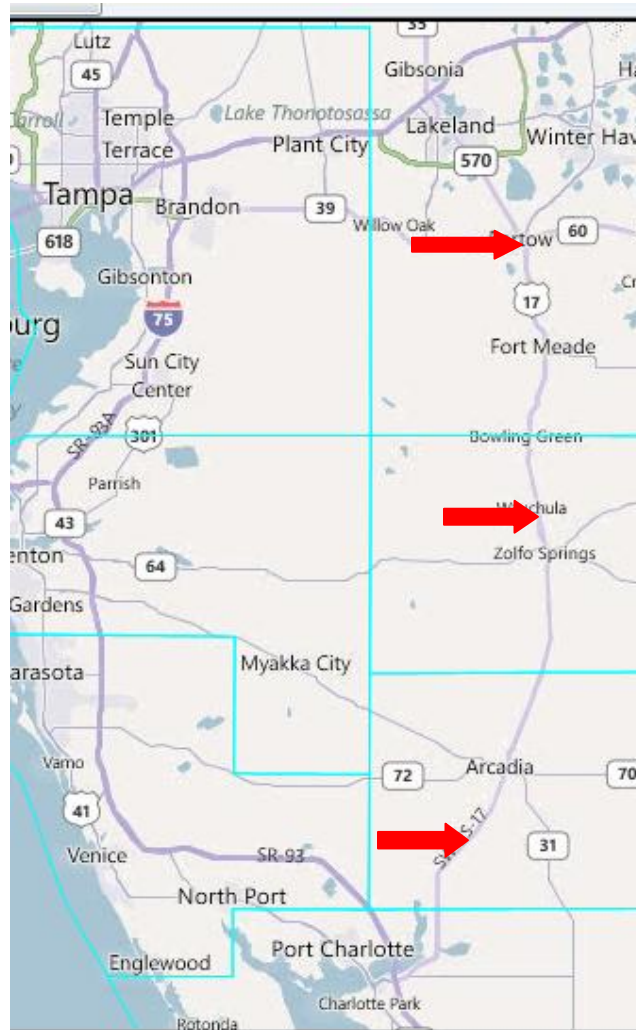
- When attempting to achieve the ideal population of 696,344 for a Congressional district in that area of the state, it may be necessary to include all or parts of a county that borders the Gulf of Mexico or the Atlantic Ocean.

³ Charles Grimsley of Zolfo Springs

Cent-5: Consider the Agricultural Communities in Southern Central Florida

Description: Please consider the agricultural communities of interest in this area. Starting in Bartow and travelling South on US-17 including the cities of Wauchula and Arcadia, as well as Eastern Hillsborough, Eastern Manatee, extreme Eastern Sarasota and Charlotte County until you get to the metropolitan areas are one agricultural community of interest. We want representation to reflect that and that isn't too diluted by the coastal communities next to us.⁴

Visual: The area of Florida referred to in the testimony looks like this (with red arrows pointing allow US-17):



⁴ Casey Welch of Lakeland

Policy Issues:

- The testimony was not specific enough in the definitions of East Hillsborough, Manatee, Sarasota and Charlotte counties. More clarification would be needed in order to build a district containing those communities. Also, it was not clearly stated as to whether US-17 would be a boundary to the Eastern portion of this community, or is rather the main artery or middle of this community and what communities to the East of US-17 might be included in that, if any.

- All of the municipalities along US-17 from Bartow to Arcadia (Bartow, Fort Meade, Bowling Green, Wauchula, Zolfo Springs and Arcadia) have a combined population of 40,319. More communities would need to be added to them in order to meet the ideal population for a House, Senate or Congressional district.