

The Villages Public Input Meeting  
July 13, 2011 – 8 a.m.  
Post-Public Input Meeting Report

---

The purpose of this document is to summarize specific district map-drawing suggestions from the Villages public meeting on July 13, 2011. Therefore, the comments in this document will focus on specific instructions provided by Florida residents participating in this meeting.

Other comments that were either not specific on how to draw a map or that were editorial in nature will not be included in this document. For all of the comments in their entirety, please see the meeting transcript, video and/or podcast via [www.floridaredistricting.org](http://www.floridaredistricting.org).

The following encapsulates comments from persons who spoke and/or submitted written comments for the Villages public meeting. To make it clear, these are the public's suggestions. This document does not necessarily reflect the opinion of the Florida Legislature.

## Specific Map-Drawing Testimony-The Villages Public Hearing

July 13, 2011

**NE/NC-16:** Keep The Villages Whole

**Description:** The Villages has grown to 84,000 people. Keep us as a community of interest and do not split us up.<sup>1</sup> It's ok to break county lines in order to keep the Villages whole because they are a community of interest.<sup>2</sup> The Villages is a unique community with unique interests.<sup>3</sup> The Villages is a unique community of common interest and our representation should reflect that. We should all be in one district within each map.<sup>4</sup> "The Villages is probably as homogenous a population as exists in Florida. It is a compact population with many common interests. We request that all of The Villages be included in the same state and federal legislative districts."<sup>5</sup> "Please strive to avoid such multiple districts in one county."<sup>6</sup> "We have two different Congressional Districts that bisect our community (and zip code for that matter). I happen to be in the 6<sup>th</sup> District, but most of The Villages is in the 5<sup>th</sup>. Our state House is a single district, as is our State Senate. Please consider locating the entire community into a single District that will be more in tune with local issues."<sup>7</sup>

**Visual:** Keeping The Villages whole would look something like this:

---

<sup>1</sup> Don Hahnfeldt, President of the Villages Homeowner's Association

<sup>2</sup> Nancy Hurlbert of Leesburg

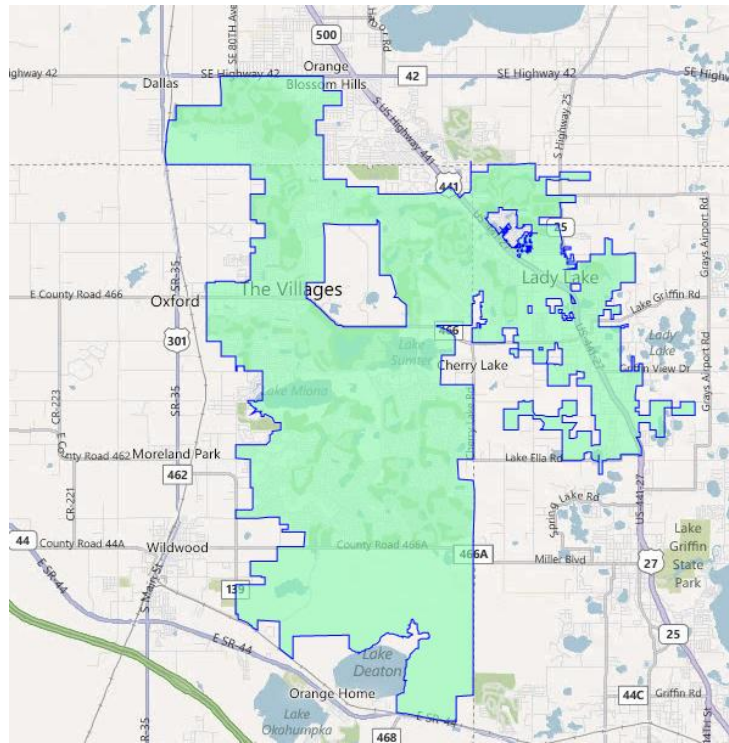
<sup>3</sup> Gary Davis of The Villages

<sup>4</sup> Roger Kass of The Villages

<sup>5</sup> Stebbins, Arthur and Carolyn – Submitted July 13, 2011 by Letter

<sup>6</sup> Cavanaugh, Marguerite – Submitted July 13, 2011 via The Villages Public Hearing

<sup>7</sup> Mers, Denny – Submitted June 18, 2011 via Email



It is important to note that for the purposes of for the creation of the map above that the CDP boundaries for the Villages in Sumter and Marion Counties were used, while the entire Town of Lady Lake was used for the Lake County portion of The Villages.

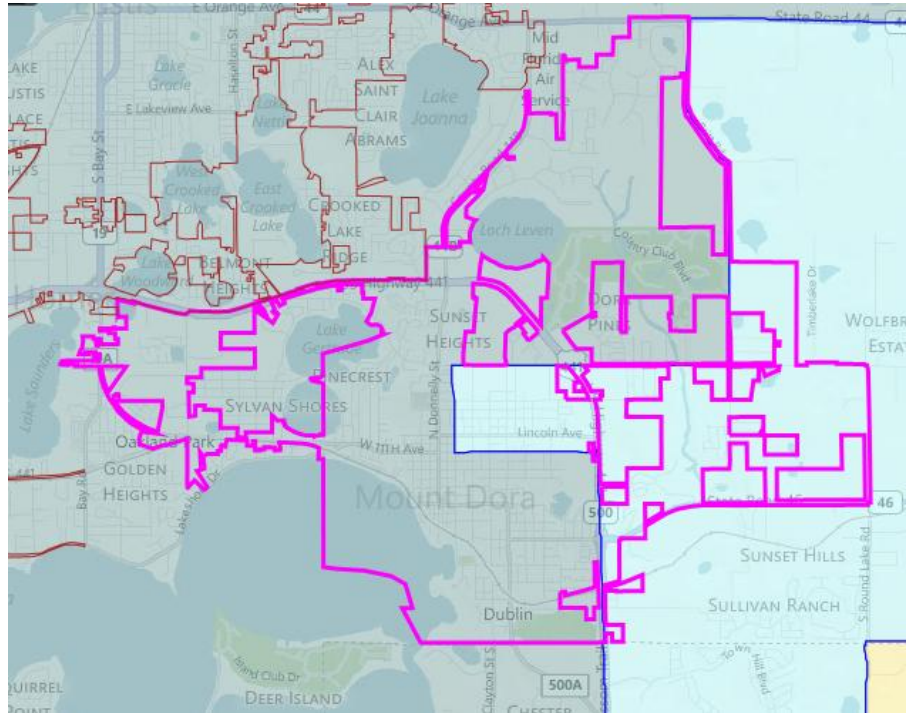
### Policy Issues:

- With a population of 65,368, The Villages is too small to make up an entire House, Senate or Congressional district and would need to have other communities added to it to meet the ideal population for a district.
- Parts of The Villages are located within Sumter, Lake and Marion Counties. All three of these county boundaries would need to be broken in order to have all of The Villages within a single district.
- The boundaries of The Villages as well as Lady Lake contain holes that would need to be addressed in the creation of a district.

**NE/NC-17:** Do Not Split the City of Mount Dora Like it is in Congressional District 3

**Description:** Don't split up cities like the way Mount Dora is split in Congressional District 3. Don't divide cities or communities of interest.<sup>8</sup>

**Visual:** Currently, The City of Mount Dora is divided between Congressional Districts 3 and 8, which looks like this (city boundary illuminated in pink):



### Policy Issues:

- A portion of Mount Dora was included into Congressional District 3, which was a minority access seat.
- The population of Mount Dora is 12,370, which would be a small portion of what would make up a congressional district.
- A district created solely within the city limits of Mount Dora would have holes in it that would need to be filled.

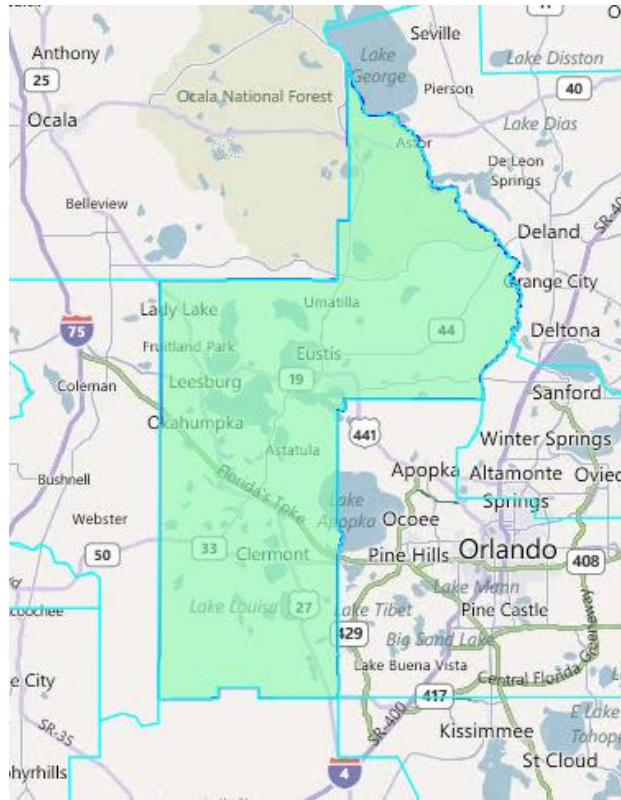
### NE/NC-18: Keep Lake County Whole Within a Congressional District

**Description:** “Keep Lake County in one Congressional District.”<sup>9</sup>

<sup>8</sup> Nancy Hulbert of Leesburg

<sup>9</sup> John Wood of Eustis

**Visual:** Keeping Lake County whole looks like this:



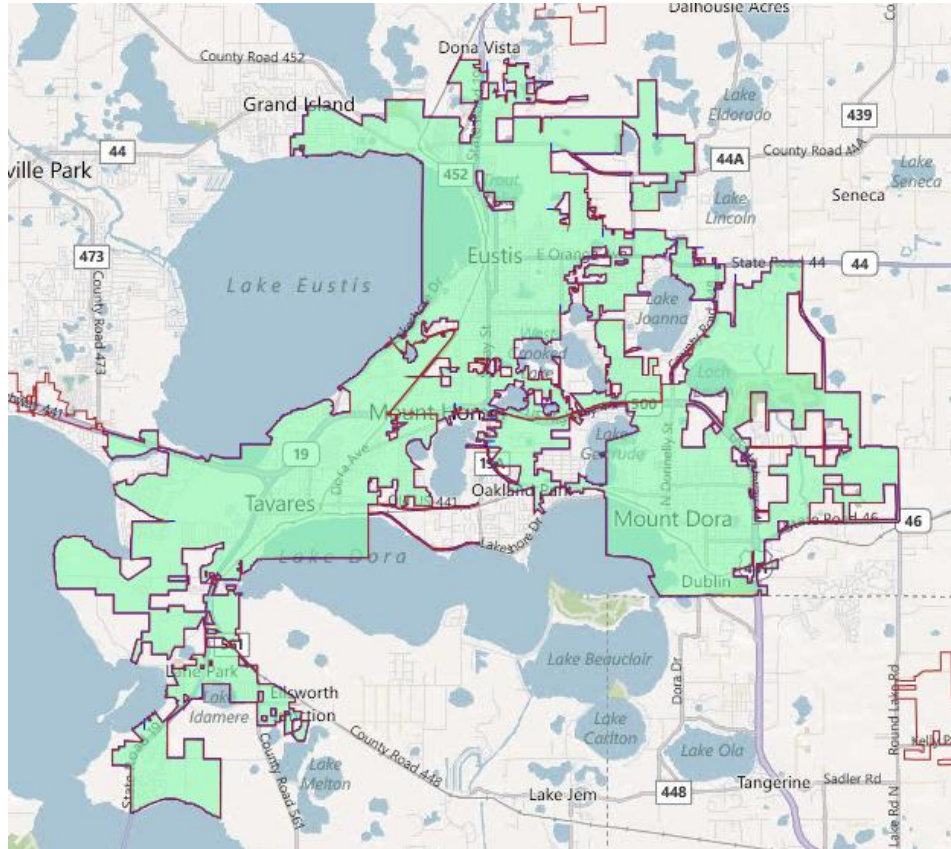
**Policy Issues:**

- With a population of 297,052, Lake County is too small to be an entire Congressional district, so more counties or communities would need to be added to it to meet the ideal population.
- Currently, portions of Lake County are within Congressional District 3, which was a minority-access seat.

**NE/NC-19:** Keep the Cities of Mount Dora, Eustis and Tavares, known as the Golden Triangle, Whole Within a District.

**Description:** The Golden Triangle of Mount Dora, Eustis and Tavares function as a community just like The Villages does. Please keep us whole and together.<sup>10</sup>

**Visual:** Keeping Mount Dora, Eustis and Tavares whole would look like this:



**Policy Issues:**

- While the city boundaries of each city naturally connect the three cities together, holes and stragglers are created in a district solely create of the city limits of each city that would need to be addressed.
- With a combined population of 44,879, more communities would need to be added to the Mount Dora-Eustis-Tavares district in order for it to meet the ideal population of a State House, State Senate or Congressional district.

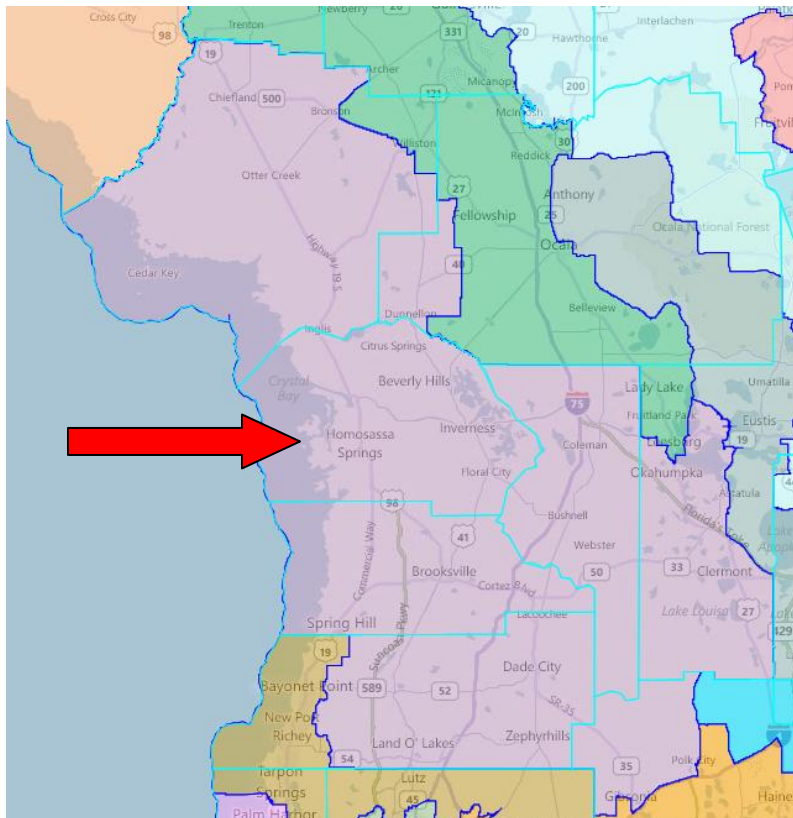
---

<sup>10</sup> Ellen Green of Eustis

**NE/NC-20:** Remove Citrus County from Congressional District 5

**Description:** Cut Citrus County loose from Congressional District 5. We are more similar to Marion County and North Central Florida.<sup>11</sup>

**Visual:** Congressional District 5 currently looks like this (in purple, with the arrow pointing to Citrus County):



**Policy Issues:**

- Because of the way Citrus County is positioned geographically within District 5, removing it would eliminate the contiguity that current exists within the district. Other

---

<sup>11</sup> Mike Fahey of Lecanto

counties or communities would need to be added or removed from the district in order for it to become contiguous.

- Currently, District 5 is 233,189 over the ideal population for a Congressional district. Citrus County's population of 141,236, which would mean that more communities would need to be removed from the current district in order for it to meet the ideal population.

#### **NE/NC-21: Keep Marion County Whole**

**Description:** Marion County is too divided. We need a singleness of representation. Home is where the heart is and we need a representative that calls Marion County home and that will stand up for Marion County as a community of interest.<sup>12</sup> We need a Senator who understands the needs of Marion County. Our Congressmen need to be closer to us as well. We should have a smaller congressional district that is exclusive to Marion County that touches other communities of necessary.<sup>13</sup> “Many of we older, concerned citizens and longer in residency, realize Marion County is truly divided in representation. It results in little ‘clout’ in Tallahassee as a group and also in Washington.”<sup>14</sup> “I would like to ask that Marion County with a population of over 300,000 people, not be further cut like the proverbial chicken!”<sup>15</sup>

“Marion County and its five municipalities of Ocala, Belleview, Dunnellon, McIntosh

**Visual:** Keeping Marion County whole would look like this:

---

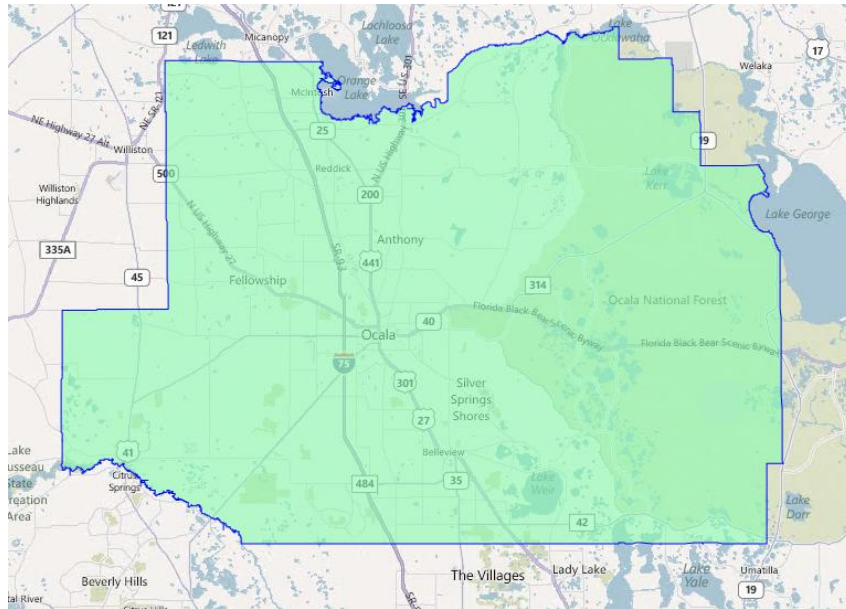
<sup>12</sup> Sam McConnell of Ocala

<sup>13</sup> Sandy Trusso of Ocala

<sup>14</sup> Vuillemot, Jeanne – Submitted July 28, 2011 via Letter

<sup>15</sup> Penna, James – Submitted July 27, 2011 via Orlando Public Hearing





**Policy Issues:**

- With a population of 331,298, Marion County is too large for a single State House district and would need to be split into at least two districts to meet the ideal population. Conversely, Marion County is too small for a State Senate or Congressional district and would have to have other counties or communities added to it in order to meet the ideal population for those districts, 138,735 more people for a Senate district and 365,047 more people for a Congressional district, respectively.
- A portion of Marion County is currently within Congressional District 3 and State House District 23, which are minority-access districts within their respective maps.