

Stuart Public Input Meeting
August 15, 2011 – 6 p.m.
Post-Public Input Meeting Report

The purpose of this document is to summarize specific district map-drawing suggestions from the Stuart public meeting on August 15, 2011. Therefore, the comments in this document will focus on specific instructions provided by Florida residents participating in these meetings.

Other comments that were either not specific on how to draw a map or that were editorial in nature will not be included in this document. For all of the comments in their entirety, please see the meeting transcript, video and/or podcast via www.floridaredistricting.org.

The following encapsulates comments from persons who spoke and/or submitted written comments for the Stuart public meeting. To make it clear, these are the public's suggestions. This document does not necessarily reflect the opinion of the Florida Legislature.

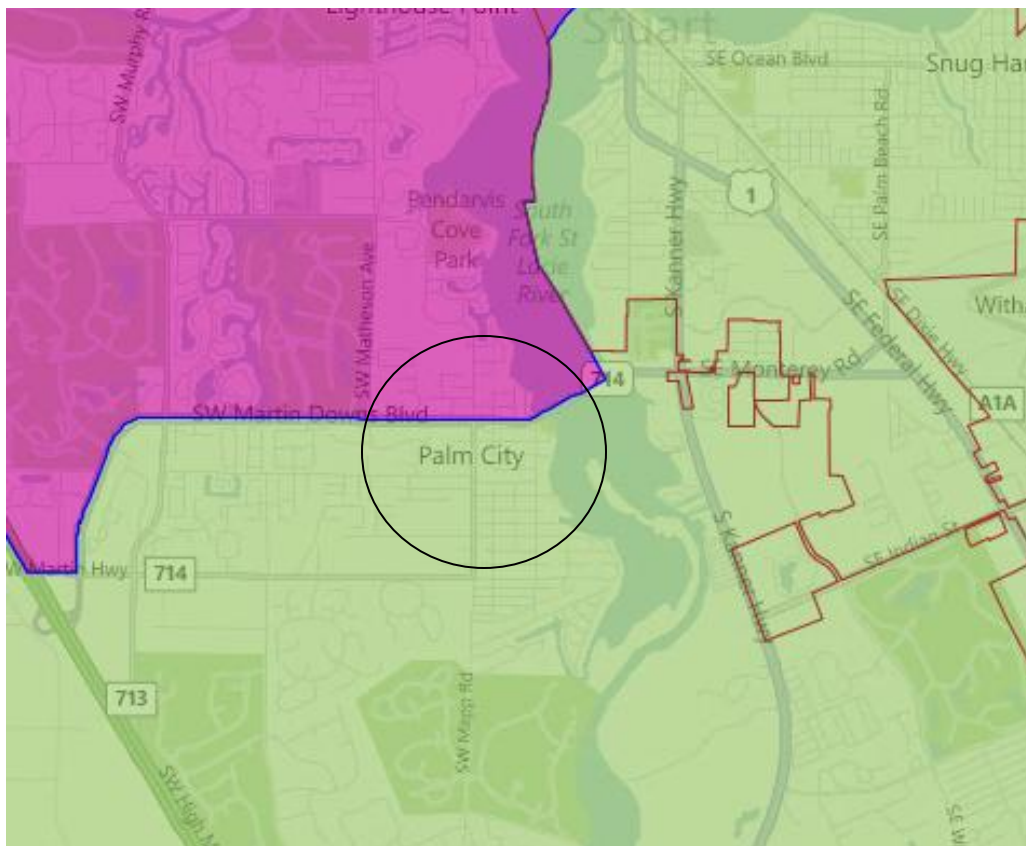
Specific Map-Drawing Testimony-Stuart Public Hearing

August 15, 2011

SE-1: Keep Palm City Whole within a House District

Description: I live in Palm City and feel marginalized by being in House District 81. I should be in House District 82. Palm City is a bedroom community to Stuart and has much more in common with it than with Port St. Lucie. Please keep us whole in the House map.¹

Visual: The Palm City area in House Districts currently looks like this (House District 81 in pink, District 82 in green with a circle around the Palm City area):



Policy Issues:

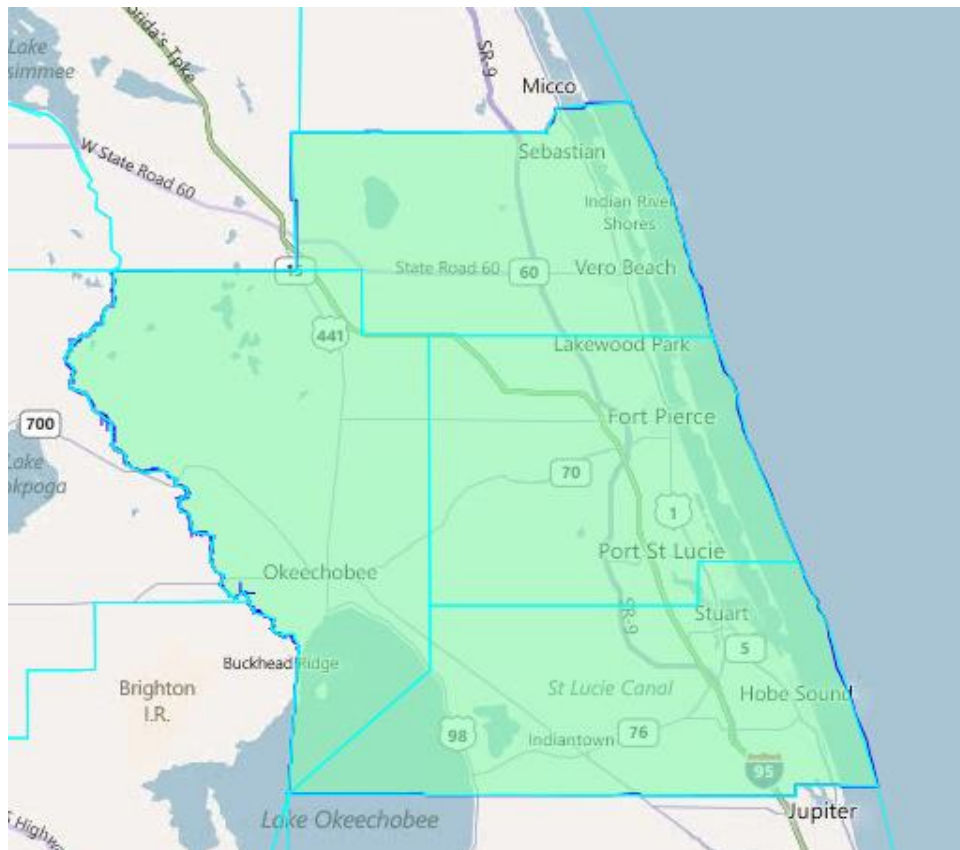
- The Palm City area of Martin County is unincorporated, so the parameters of that community would need to be further defined.
- Both House Districts 81 and 82 need to lose population in order to meet the ideal population for a House district. 81 needs to lose 44,956, while 82 needs to lose 15,588.

¹ David Glener of Palm City

SE-2: Combine all of Martin, St. Lucie, Indian River and Okeechobee Counties to form a Congressional district

Description: If you add the populations of Martin, St. Lucie, Indian River and Okeechobee Counties, it is almost exactly 700,000 people. This would be a compact district. While Okeechobee isn't similar to the other three Treasure Coast counties, those residents often travel to the Treasure Coast for goods and services and are integrated into our community.²

Visual: Combining those four counties into a Congressional district would look like this:



Policy Issues:

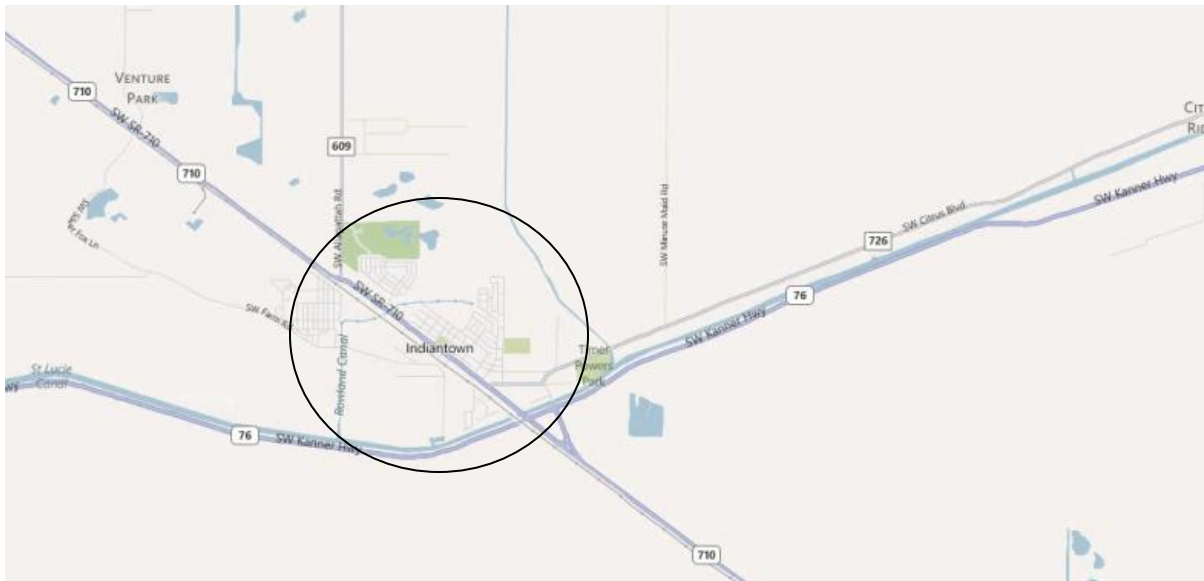
- With a population of 602,131, the district shown above is too small to meet the ideal population of a Congressional district. 94,213 more people would be needed from other counties or communities.

² David Glener of Palm City

SE-3: Keep Indiantown Whole³

Description: Indiantown has 6,408 residents, 2,901 of them are voters. It is the only city in the county that is split between three different (House) districts. They deserve one member of Congress and in the State Legislature. This community works together and should be together.⁴ No area has been redistricted worse than Indiantown.⁵

Visual: The Martin County community of Indiantown looks like this (with a circle around it):



Policy Issues:

- Indiantown is an unincorporated community (located in Western Martin County) so the boundaries of the community are unclear. Further clarification might be needed.

SE-4: Keep Martin County Whole within a House District

Description: When I look at Martin County, it is roughly the same size as the population of a House seat.⁶

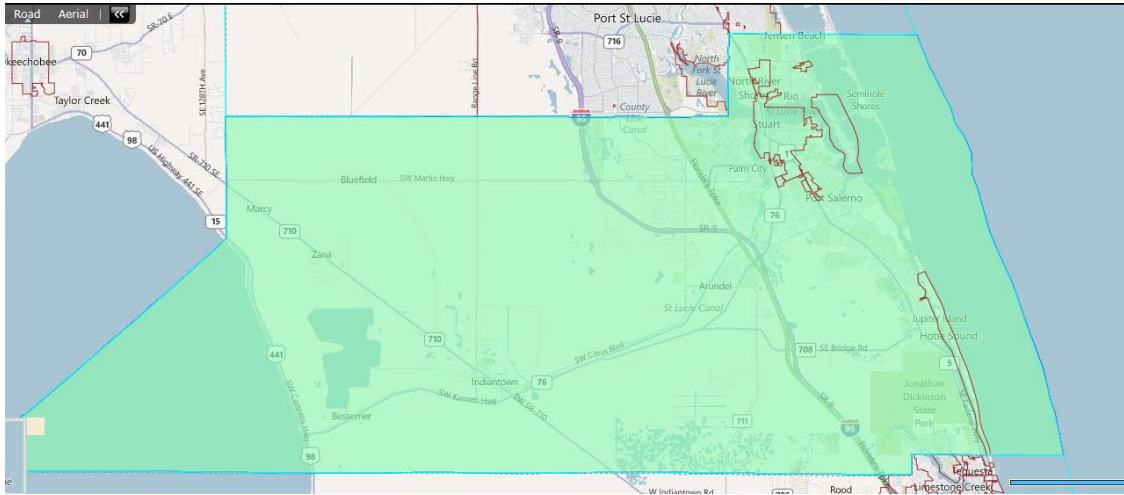
³ David, Vicki (Martin County Supervisor of Elections) – Submitted August 16, 2011 via Stuart Public Meeting

⁴ Carrie Anderson of the Martin County Supervisor of Elections Office

⁵ James Harrell of Stuart

⁶ Frank Chicuine of Stuart

Visual: All of Martin County within a House district would look like this:



Policy Issues:

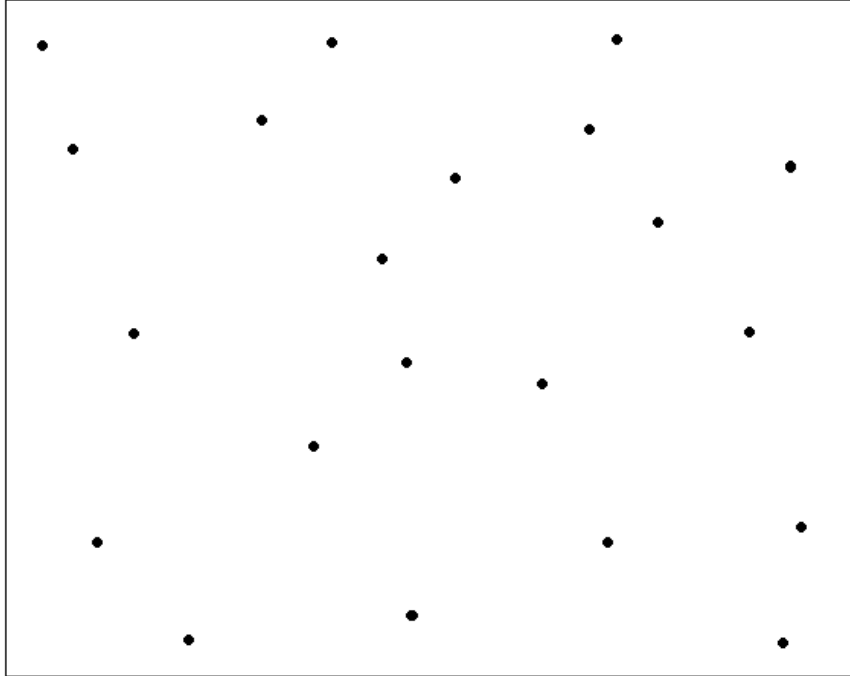
- With a population of 146,318, Martin County is too small to have a House seat all to itself in order to meet the ideal population for a House seat. More communities would need to be added to it in order to gain the additional 10,359 people needed.

SE-5: Nest Senate and House Districts within Congressional Districts

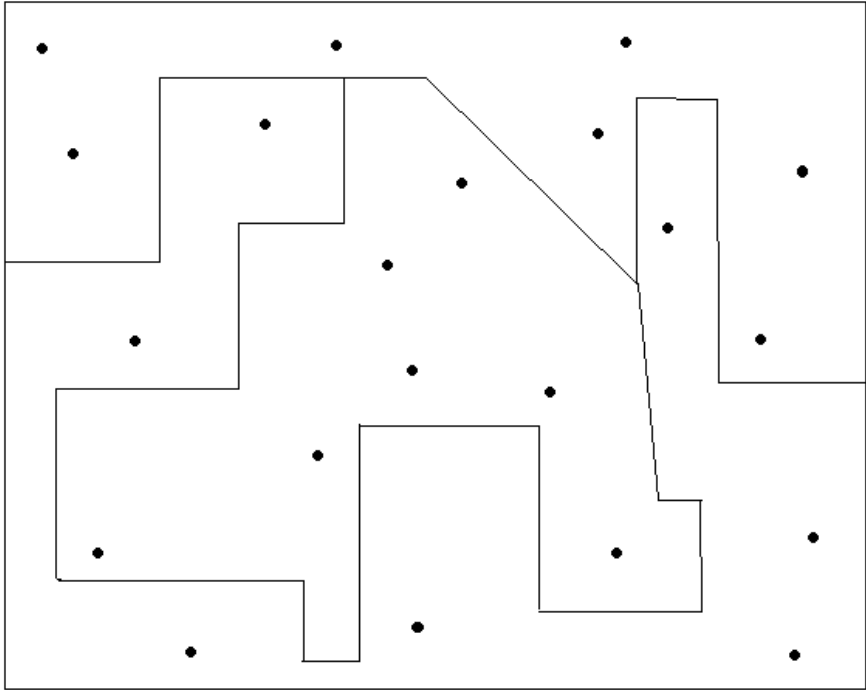
Description: Take the Congressional districts and break them up into Senate and House districts.⁷

Visual: Using the illustrations below to demonstrate the concept of “nesting”, a Senate district will be dividing into three equal portions so that three House districts are nested within the Senate district.

⁷ Gary Worth of Palm City



The square dots within it represent an entire State Senate district and its population. Using the concept of nesting, each House district will have an equal amount of population and each House district's boundaries will be nested within the Senate district.



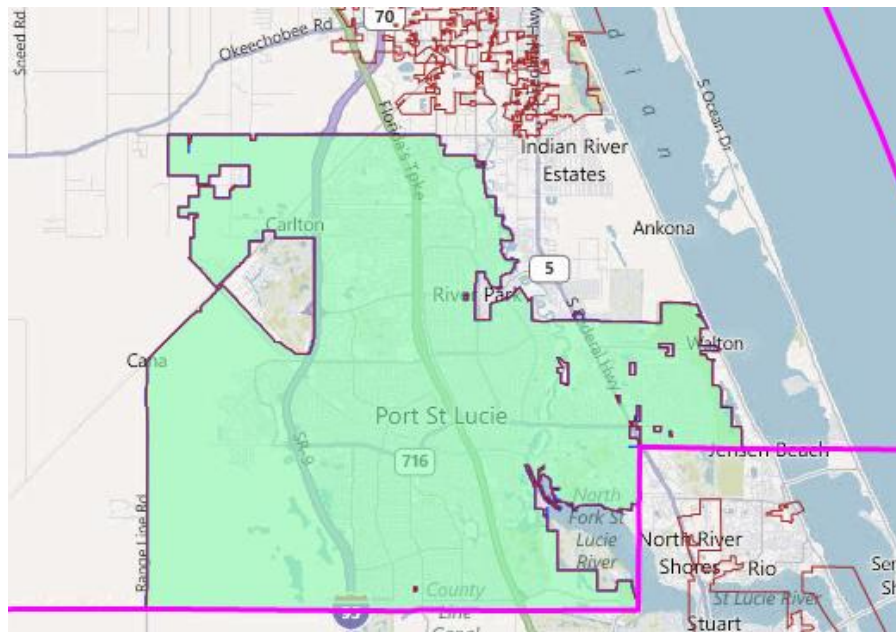
Policy Issues:

- Unlike the concept of nesting House districts into a Senate district or vice-versa, the numbers for the ideal population for a Congressional district do not sync up with the ideal populations for a Senate and House district, which is critical to nesting. The ideal population for a Congressional district is 696,345, while the ideal populations for a Senate and House district are 470,033 and 156,678. This means is that 1.48 Senate districts would be able to “nest” in a Congressional district and 4.44 House districts would be able to. In order for nesting to work, whole districts have to be able to nest within the larger district.

SE-6: Keep the City of Port St. Lucie Whole

Description: I would like to see the City of Port St. Lucie kept intact.⁸

Visual: The City of Port St. Lucie kept whole within a district would look like this:



Policy Issues:

- With a population of 164,603, the population of the City of Port St. Lucie is larger than the ideal population for a House district. That is a deviation of 5.1% over the population. In order for the population of the district above to be closer to the ideal population, the City of Port St. Lucie would need to be split among two districts.

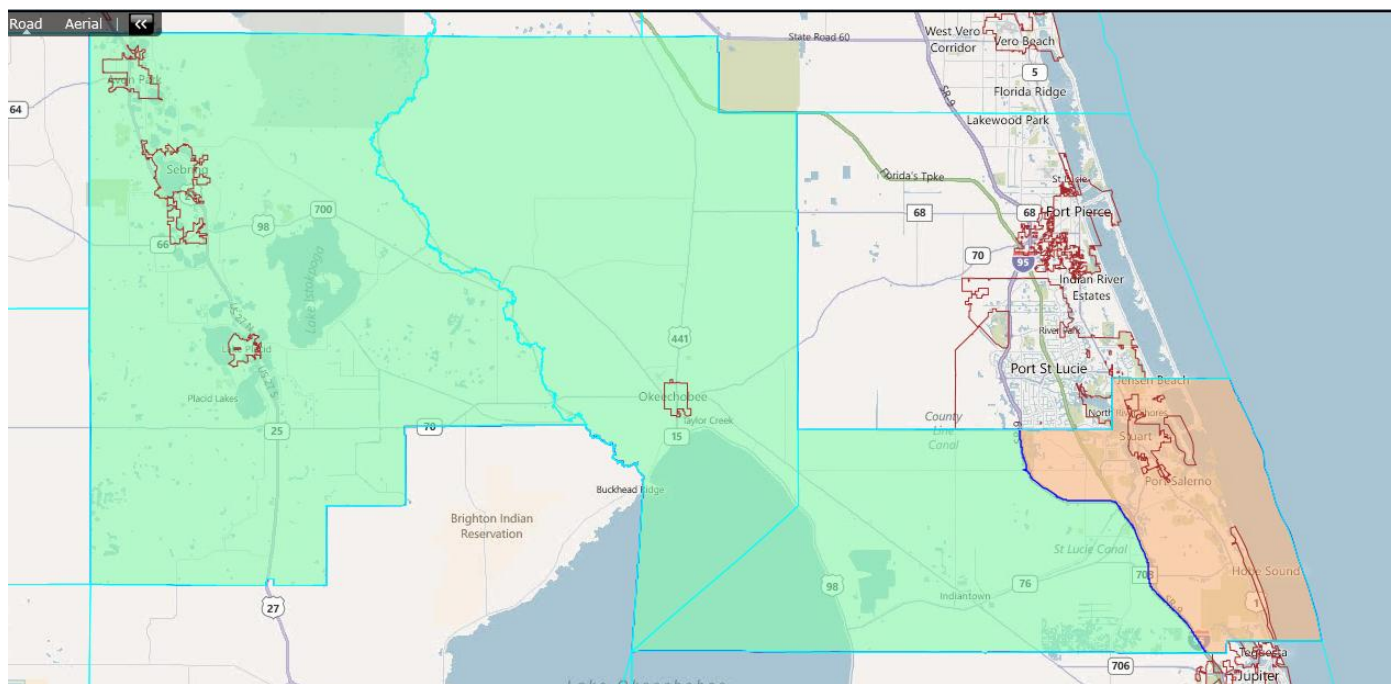
⁸ James Rich of Port St. Lucie

- Using the boundaries of the City of Port St. Lucie as the district, there are holes within the district that would need to be addressed.

SE-7: An Outline Presented on how to have Two House Districts in Martin County

Description: Port St. Lucie has its own population enough for a House seat and does not need to share a seat with Martin County. For two Martin County seats, use the turnpike as the Western boundary, the St. Lucie County line as the Northern boundary and go South into Hobe Sound somewhere in the vicinity of North of Tequesta. Indiantown has common interests as Okeechobee and Highlands Counties. Add then together to create a rural district of common interest.⁹

Visual: Following the instructions given in the testimony, the districts would look like this:



Policy Issues:

- The population for District 1 (in green, above) is 156,393, which is just 284 people shy of the ideal population for a House district, which is a deviation of .2%.
- In the creation of District 1 above, a pair of VTDs had to be split in order for the Florida Turnpike to be used as the dividing line to the East.

⁹ Charles Winn of Stuart

- The population for District 2 (in brown, above) is 128,707 which is too small for the ideal population for a House district. Other communities to the North or South would need to be added in order to obtain the 27,970 needed to complete the district. In the testimony given, it was mention to bring the district South of Hobe Sound and stop just North of Tequesta, which was what was attempted here. The district stop at the Martin/Palm Beach County line, as going further South would have taken the district into Tequesta.