

Sarasota Public Input Meeting
August 30, 6 p.m.
Post-Public Input Meeting Report

The purpose of this document is to summarize specific district map-drawing suggestions from the Sarasota public meeting on August 30, 2011. Therefore, the comments in this document will focus on specific instructions provided by Florida residents participating in these meetings.

Other comments that were either not specific on how to draw a map or that were editorial in nature will not be included in this document. For all of the comments in their entirety, please see the meeting transcript, video and/or podcast via www.floridaredistricting.org.

The following encapsulates comments from persons who spoke and/or submitted written comments for the Sarasota public meeting. To make it clear, these are the public's suggestions. This document does not necessarily reflect the opinion of the Florida Legislature.

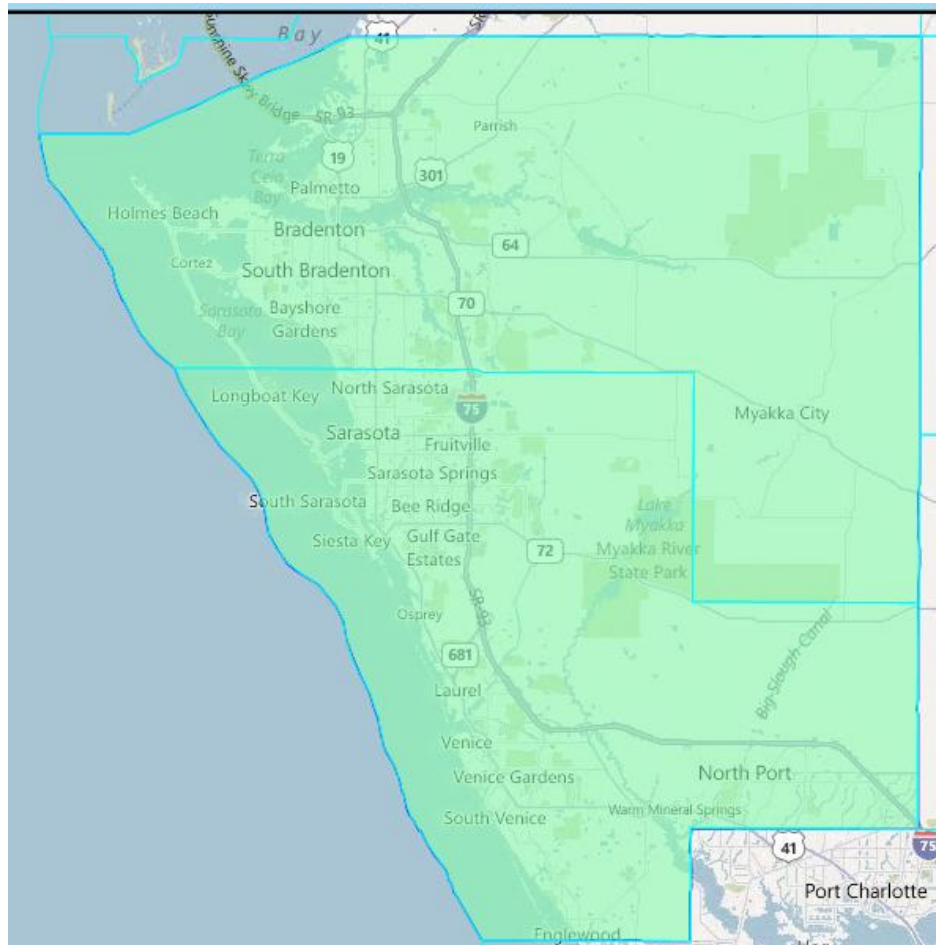
Specific Map-Drawing Testimony-Sarasota Public Hearing

August 30, 2011

SW-12: Keep Sarasota and Manatee Counties Together Within a Congressional District

Description: Sarasota and Manatee Counties should be combined into one congressional district. It's less than 11 miles from downtown Bradenton to downtown Sarasota. The relationship between the two counties is far greater than with the communities to the south and north.¹ Please make sure that the Congressional seat in Manatee County is combined with Sarasota County.² Sarasota and Manatee Counties are unique in their concentration of arts organizations and institutions of higher learning. I would ask that this area not be divided.³

Visual: Keeping Sarasota and Manatee Counties Whole and Together in a Congressional District would look like this:



¹ Glenda Wright of Bradenton

² Peggy Simone of Bradenton

³ Michael Verbil of Sarasota

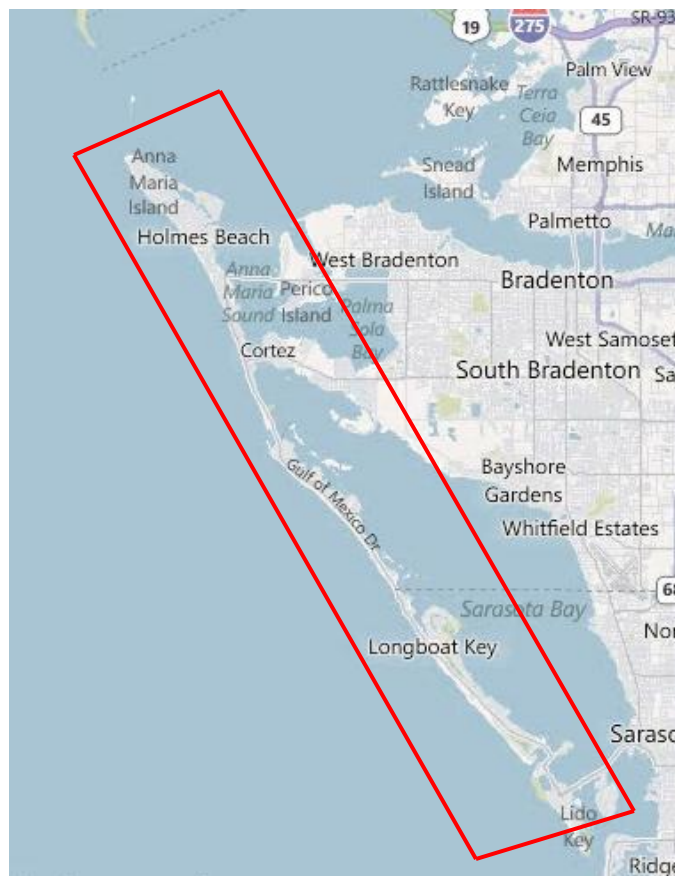
Policy Issues:

- With a population of 702,281, the district drawn above is too large for the ideal population for a Congressional district. The two communities would need to be split in order for the 5,937 people to be removed to meet the ideal population.

SW-13: Keep Barrier Islands Together in Districts

Description: I think that the barrier islands should all be in one district. They have issues in common such as tourism and beach renourishment.⁴

Visual: The barrier islands in Manatee County look like this:



⁴ Larry Grossman of Longboat Key

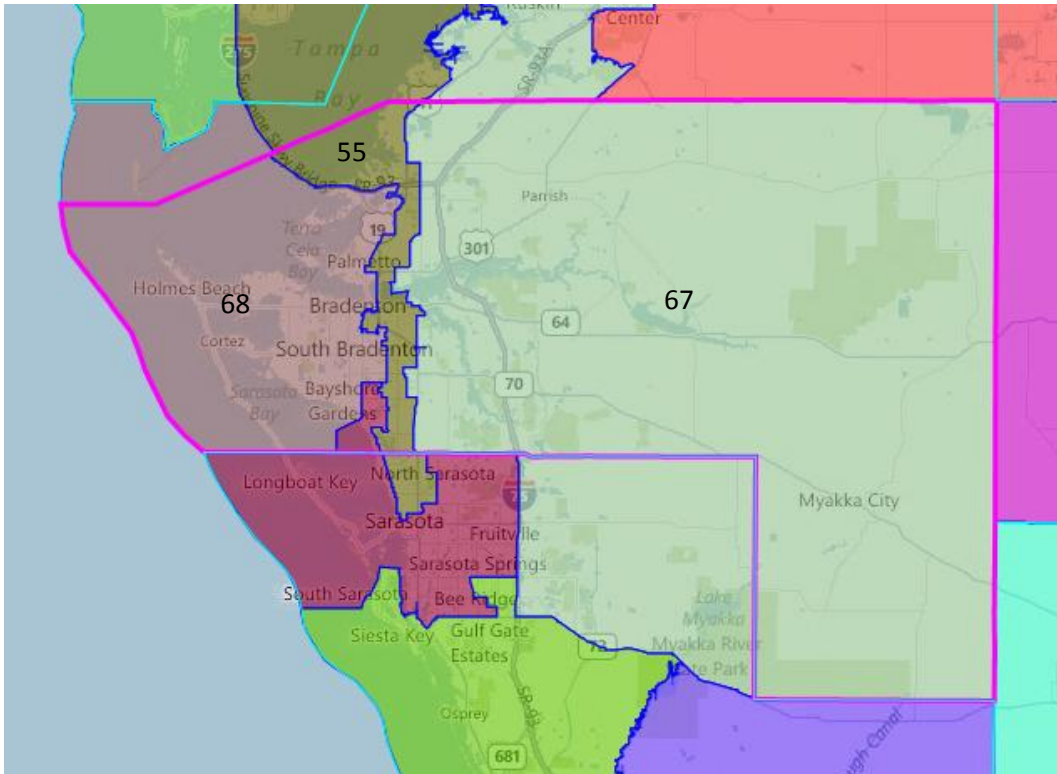
Policy Issues:

- The barrier islands of a community are general less populated that the inland areas, so in order to connect them with a district, you would potentially create long, thin districts that ran north-south.

SW-14: Have Two House Seats Wholly Within Manatee County

Description: My priority is having two State House seats within Manatee County. After creating those two house seats, you will probably need about another 10,000 people. Please get that population from either east Sarasota County, like the community of Lakewood Ranch, or Hardee County.⁵

Visual: Currently, the House districts in Manatee County look like this:



Policy Issues:

- In the testimony given, it was not stated as to how Manatee County could be divided in order to create two districts.
- With a population of 322,833, Manatee County has enough of a population to create just over two districts.

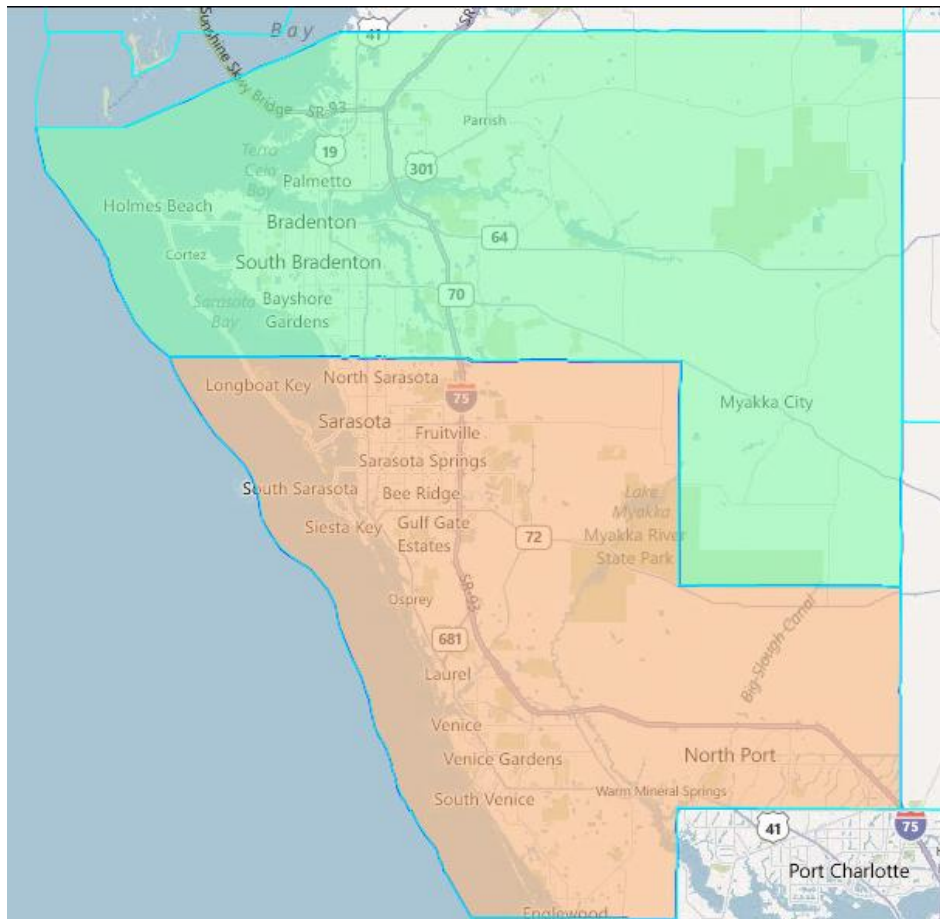
⁵ Peggy Simone of Bradenton

- Creating two districts in Manatee County may have an impact House District 55, which is currently a majority-minority Black district.

SW-15: One Senate Seat Based in each of Manatee and Sarasota Counties

Description: I would like to see a Senate seat based in Manatee County and another based out of Sarasota County.⁶

Visual: One Senate Seat in Manatee County and another in Sarasota County would look like this:



Policy Issues:

- With a population of 322,833, Manatee County is too small to meet the ideal population of a Senate district and other communities would need to be added to it.
- With a population of 379,448, Sarasota County is also too small to meet the ideal population of a Senate district and would need to have other communities added to it.

⁶ Peggy Simone of Bradenton

SW-16: Divide Manatee and Sarasota Counties Between East and West to Create Four House Districts.

Description: If you take Manatee County and draw a line from north to south, you have approximately two representatives within a couple thousand people. You can basically do the same thing in Sarasota County to create two more.⁷

Visual: Dividing both Manatee and Sarasota into each halves using a line that runs from north to south would look something like this:



Policy Issues:

- It is important to note that in either county, no geographic boundary was given to divide the counties into eastern and western portions. The map above was built using VTDs.

⁷ Richard Jackson of Bradenton

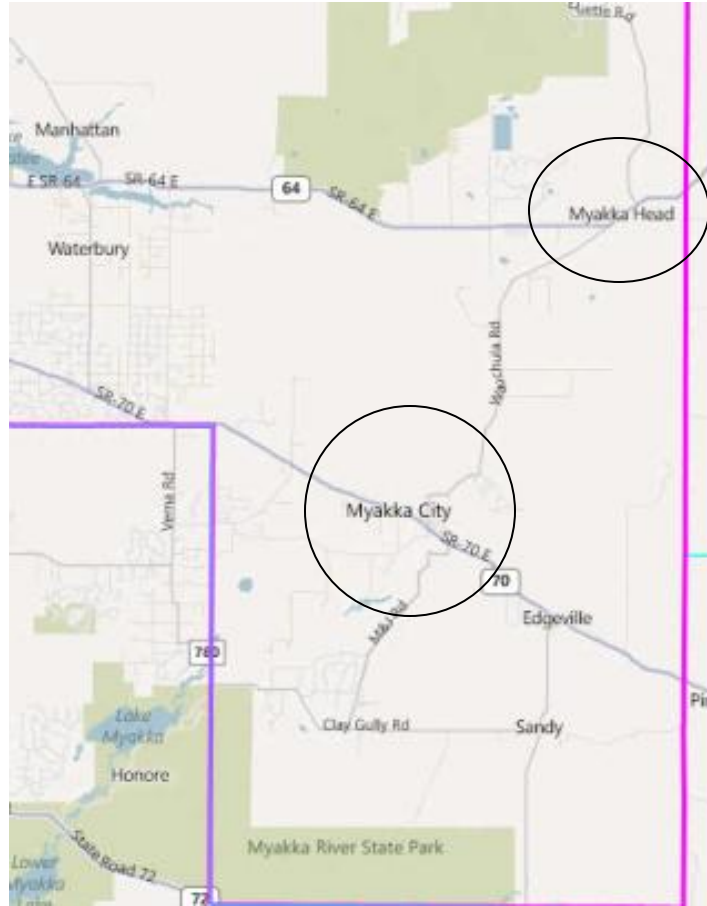
- For Manatee County, two districts were drawn that would have roughly the same population. The western Manatee district has a population of 161,606, while the eastern Manatee district has a population of 161,227. Both districts are over ideal population for a House district by 4,929 and 4,550 people, respectively. At least a third district would need to include parts of Manatee County in order to meet the ideal population.
- For Sarasota County, two districts were also drawn that have roughly the same population. The western Sarasota district has a population of 189,152, while the eastern district has a population of 190,296. Again, both districts are over the ideal population for a House district and Sarasota County would need to be split at least a third time in order to meet the ideal population.

SW-17: Rural Communities in Manatee County

Description: The communities of Myakka Head, Old Myakka and Myakka City have rural communities that have a lot of common interests. This rural area also has commonalities with south Polk County, east Hillsborough County as well as Hardee and DeSoto Counties.⁸

Visual: Myakka Head and Myakka City can be found in Manatee County here:

⁸ Casey Welch of Bradenton



Policy Issues:

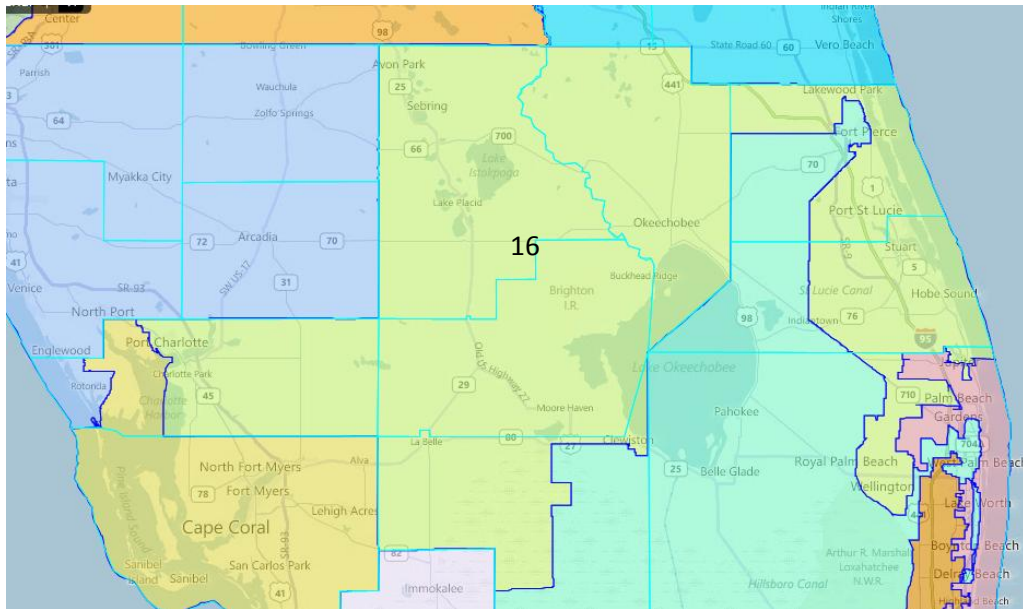
- The exact parameters defining the communities of Myakka City, Myakka Head and Old Myakka were not provided in the testimony.

SW-18: Connect Charlotte County with Western Coastal Counties in a Congressional District

Description: I live in District 16, which is so gerrymandered. I realize that a Congressional District is at least four times the size of Charlotte County, but I ask you that we be connected with other coastal counties such as Sarasota or Lee Counties. Please have all is the county with connected to a district on the southwest coast.⁹

Visual: Currently, Congressional District 16 looks like this:

⁹ Tess Canja of Port Charlotte



Policy Issues:

- As it was stated in the testimony, with a population of 159,978 Charlotte County is too small to meet the ideal population of a Congressional district. 536,367 more people would need to be added to it from other counties and communities in order to complete the district.

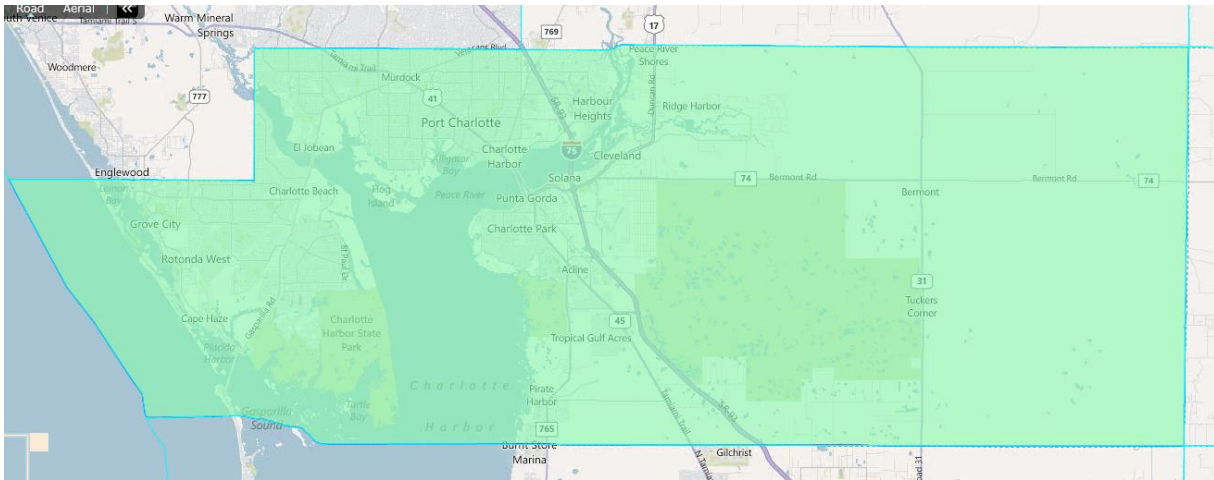
SW-19: Keep Charlotte County Whole Within a State House District

Description: Make Charlotte County one State House district. Right now, it is a part of three.¹⁰ We would like for Charlotte County to be in one House District. Please don't divide us.¹¹

Visual: All of Charlotte County placed within a House district would look like this:

¹⁰ Tess Canja of Port Charlotte

¹¹ Marilyn Jacobs of Port Charlotte

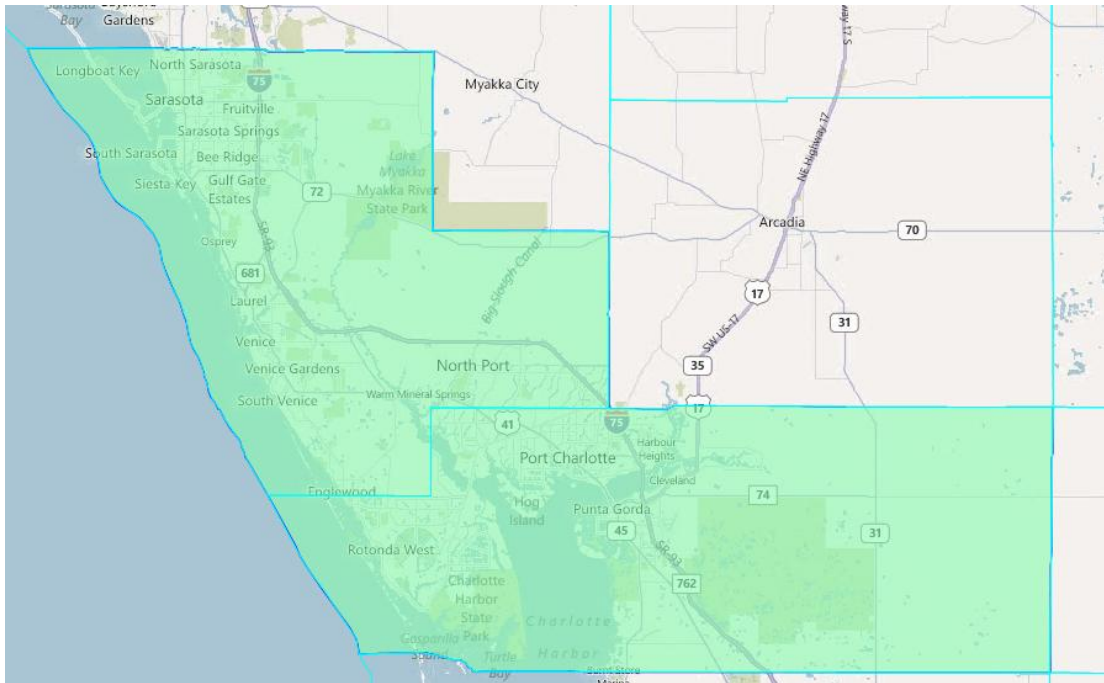


Policy Issues: With a population of 159,978, Charlotte County is over the population for an ideal House district. All of the County’s population within a House district would be a 2.1 % deviation.

SW-20: Connect Charlotte and Sarasota Counties in a Senate District

Description: Our Senate district should have a Charlotte-Sarasota County connection. We are currently represented by three Senators, none of which are from Charlotte County.¹²

Visual: Charlotte and Sarasota Counties Connected within a Senate District would look like this:



¹² Tess Canja of Port Charlotte

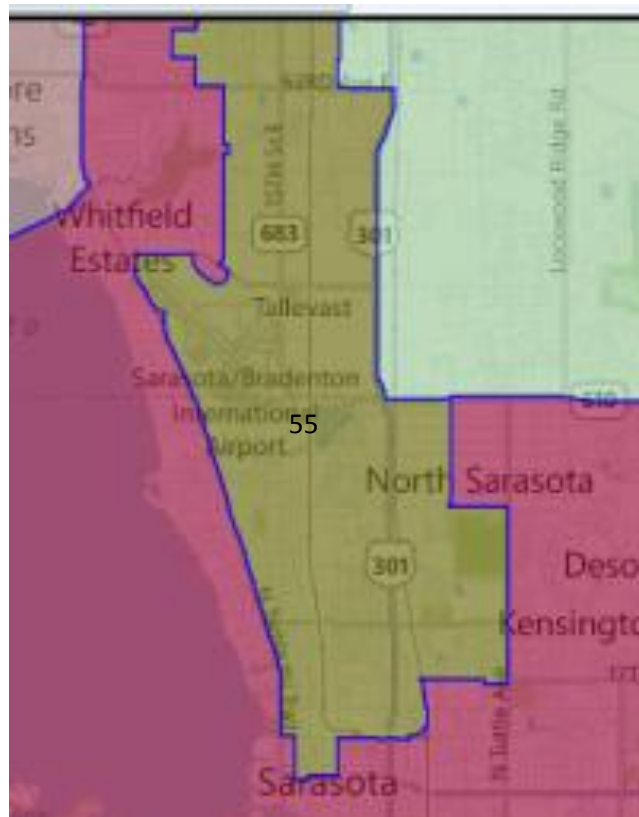
Policy Issues:

- With a population of 539,426, the district above is too large for the ideal population of a Senate district. 69,394 people would need to be removed from it in order to complete the district.

SW-21: Keep the Newtown Community in House District 55

Description: Please keep Newtown in North Sarasota in House District 55. This is very important to the Black community and removing us from this district would be a violation of Amendment 5.¹³ Keep Newtown and North Sarasota combined with Manatee, Hillsborough and Pinellas County in House District 55. This is a seat that gives us the opportunity to elect the representative of our choice.

Visual: Currently, House District 55 in northern Sarasota looks like this:



¹³ Theresa Perkins of Sarasota

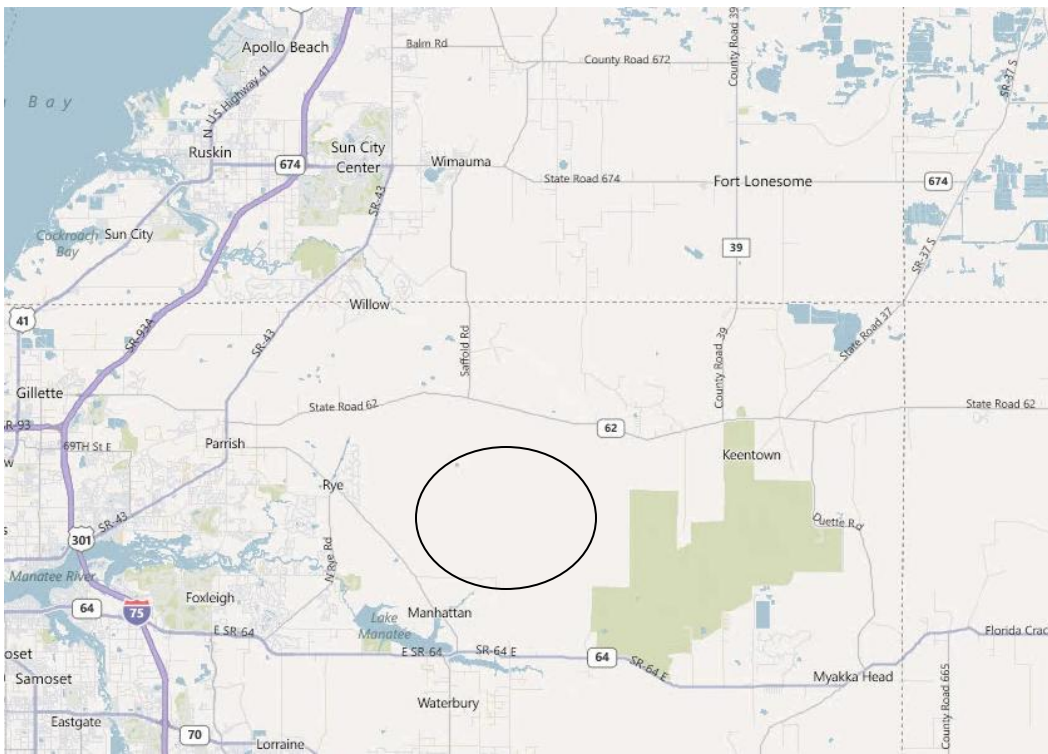
Policy Issues:

- Currently, House District 55 has a population of 133,112, which is 23,565 short of the ideal population. It currently also has a Black VAP percentage of 49.

SW-22: Keep the Community of Lakewood Ranch Whole

Description: Lakewood Ranch is a residential and business community that wants to work closely with our representatives. Please don't split us in any district.¹⁴

Visual: The Lakewood Ranch community is located on the map here:



Policy Issues:

- According to their website, Lakewood Ranch is located East of I-75, south of 301 and north of 64 in the eastern portion of Manatee County. The exact parameters were not given in the testimony, so more clarification may be needed.

¹⁴ Craig Cerreia of University Park