

Orlando Public Input Meetings

July 27, 2011 – 2 p.m. and 6 p.m.

Post-Public Input Meetings Report

The purpose of this document is to summarize specific district map-drawing suggestions from the Orlando public meetings on July 27, 2011. Therefore, the comments in this document will focus on specific instructions provided by Florida residents participating in these meetings.

Other comments that were either not specific on how to draw a map or that were editorial in nature will not be included in this document. For all of the comments in their entirety, please see the meeting transcript, video and/or podcast via www.floridaredistricting.org.

The following encapsulates comments from persons who spoke and/or submitted written comments for the Orlando public meetings. To make it clear, these are the public's suggestions. This document does not necessarily reflect the opinion of the Florida Legislature.

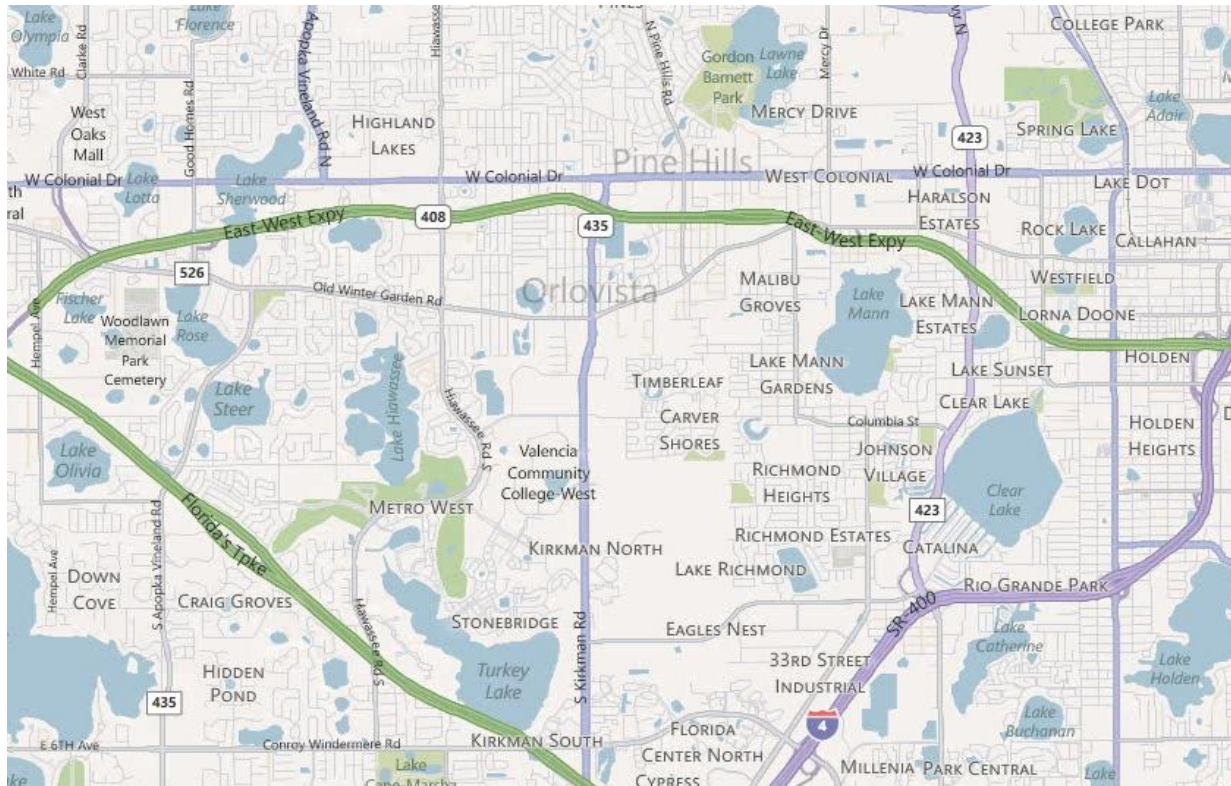
Policy Issues:

- With a population of 268,685, Osceola County is too small to have a Congressional district all to itself and would need to be added to other counties or communities in order to meet the ideal population.

Cent-14: Keep Orlo Vista Whole

Description: Orlo Vista is cut into pieces within the districts. Please keep us whole.³

Visual: The Orlo Vista area of Orange County looks like this:



³ Mignon Kostamo of Orlando

Policy Issues:

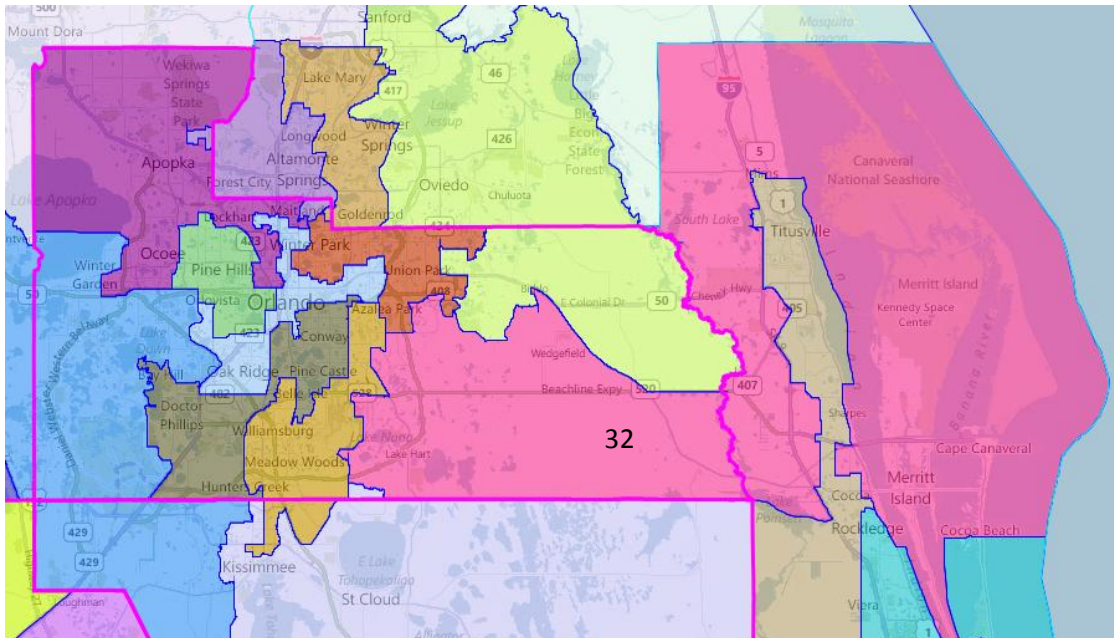
- Orlo Vista is an unincorporated area of Orange County and the boundaries of the area were not clearly defined in the testimony, more clarification may be needed.

Cent-15: Create a Legislative District that is Exclusive to East Orange County

Description: I live in House District 32 and Senate District 24 and both of my members of the Legislature live in Brevard County. Please draw a district that is only East Orange County that does not link to Brevard. The district should stop at the swamp at the St. Johns River.⁴ East Orange County should be drawn together.⁵

Visual: Currently, House District 32 and Senate District 24 look like this:

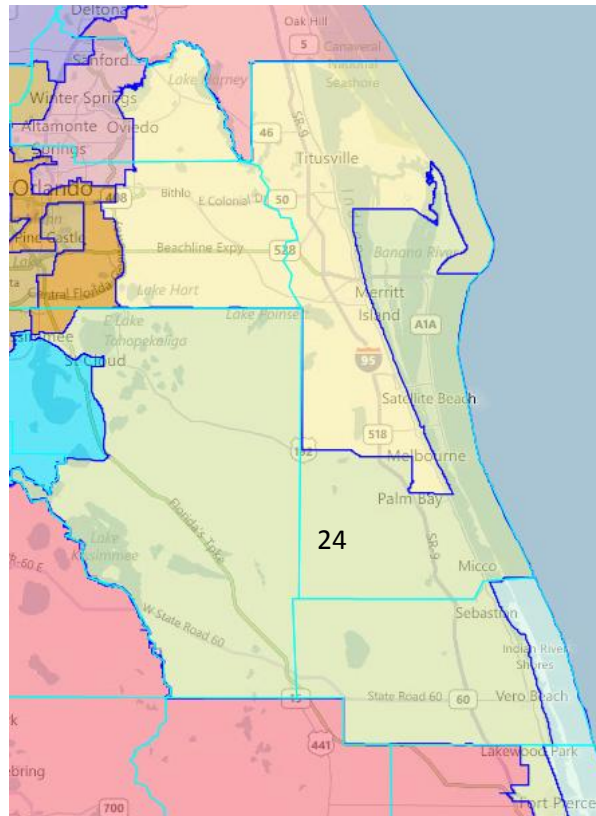
House District 32 (in pink)



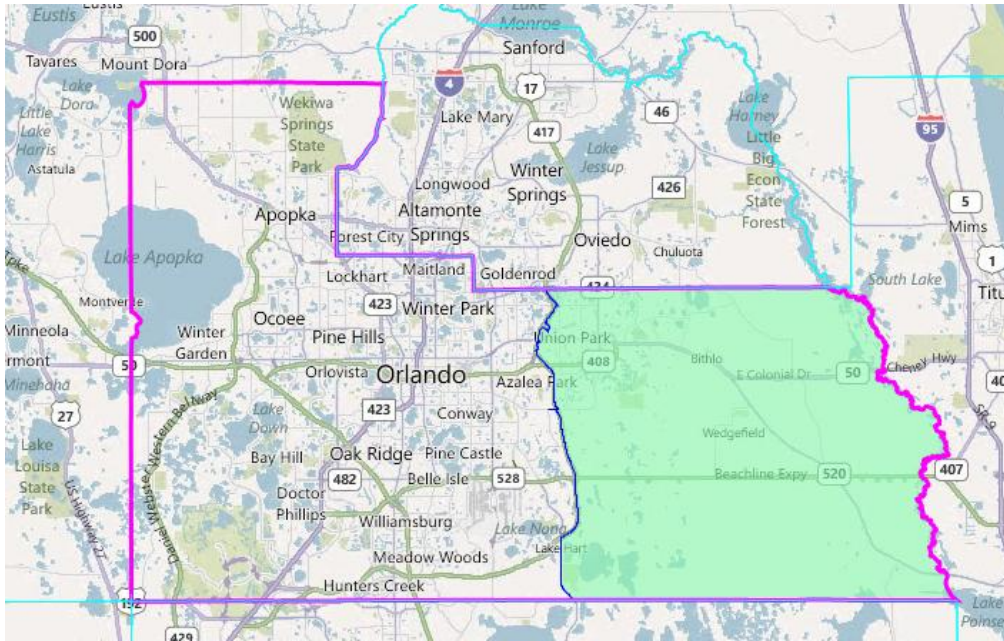
⁴ Diane Ramba of Orlando

⁵ Doug Head of Orlando

Senate District 24 (in beige)



Visual: An East Orange County district could look like this:



Policy Issues:

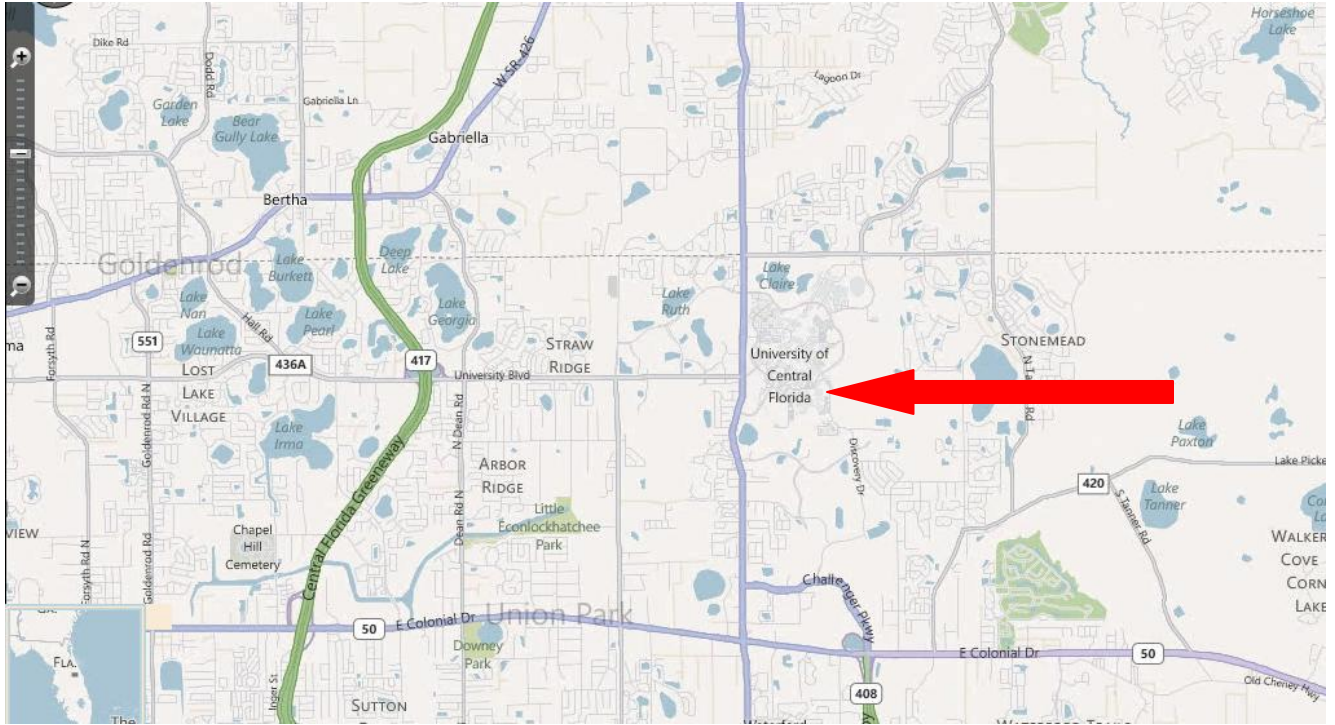
- It is important to note that the definition of East Orange County was not defined by the testimony. For the purposes of this exercise, the horizontal portions of State Road 417 was used as the dividing line to the West and the county line was used to the East. There are other boundaries or geography that could be used as the dividing line between East and West.
- The district shown above has a population of 183,622, which would make that district too large for the ideal population of a House district and too small for the ideal population of a Senate district.
- In the creation of the district shown above, several VTDs were split in the process.

Cent-16: Keep the Student Population of the University of Central Florida in One District

Description: I go to school with 60,000 voting-aged students, please do not split the student vote. Please don't divide the UCF vote into multiple districts.⁶

Visual: The campus of the University of Central Florida can be found here (red arrow pointing to it):

⁶ Anna Eskamani of Orlando



Policy Issues:

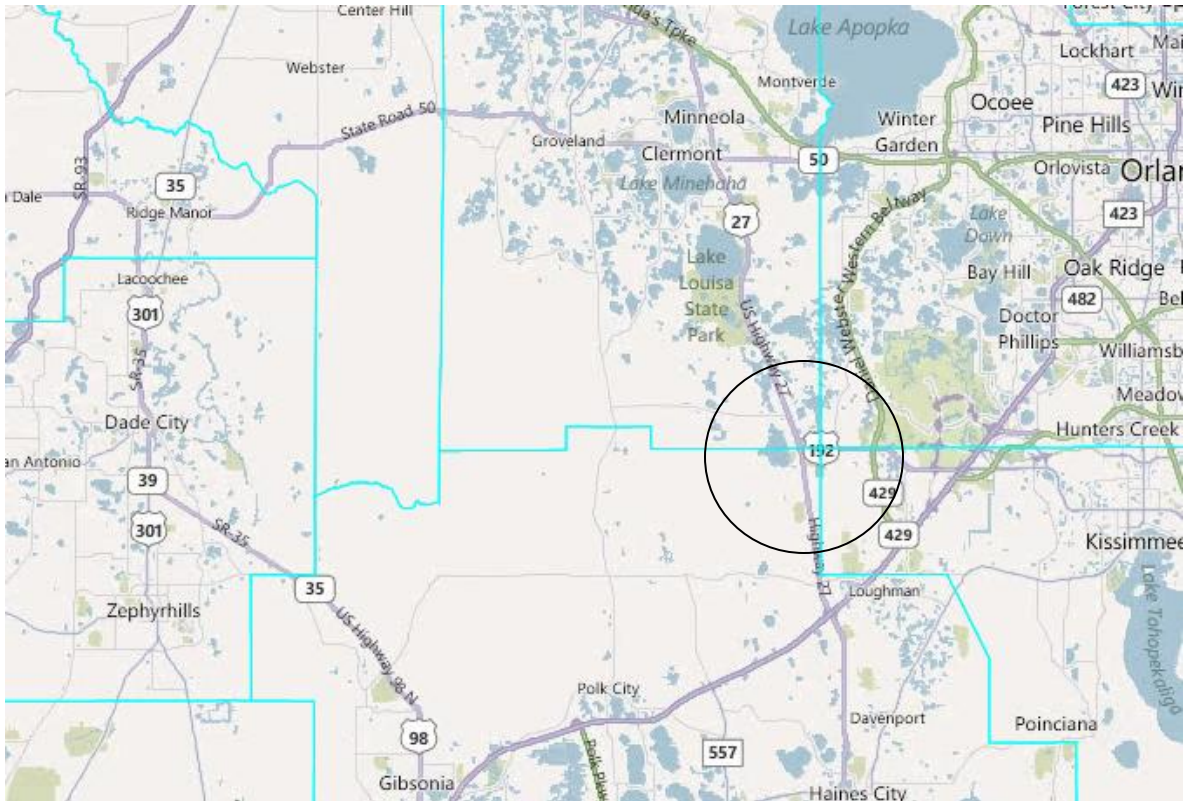
- The vast majority of the UCF student population does not live in campus, so a district keeping the student population whole would need to encompass more than just the boundaries of campus.

Cent-17: Keep the Four Corners Region Whole

Description: The Four Corners region, which is the corners of Polk, Orange, Osceola and Lake Counties, should remain whole through this process.⁷

Visual: The Four Corners region looks like this (with a circle around it):

⁷ Allisha Douglas of Winter Garden



Policy Issues:

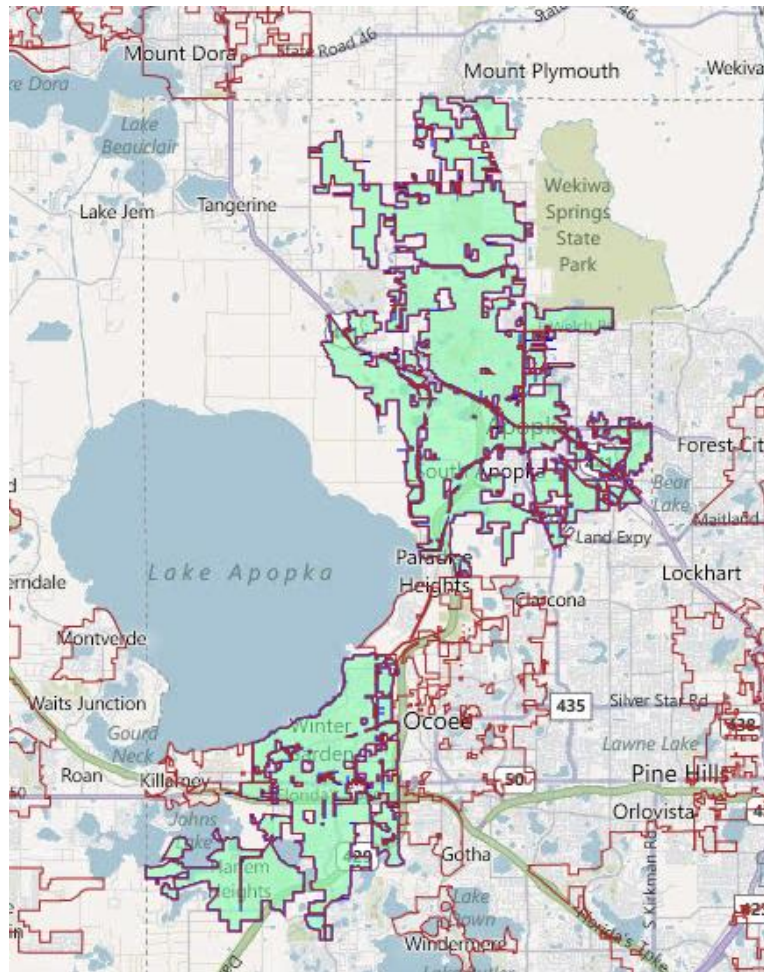
- The Four Corners was not more defined other than the meeting point of the four counties. Based on the testimony, it is unclear as to how far this area stretches, and more clarification may be needed.

Cent-18: Connect the City of Apopka with the City of Winter Garden and Western Orange County.

Description: Apopka should be linked with Winter Garden and West Orange County.⁸

Visual: A legislative district that had both the Cities of Apopka and Winter Garden would look like this:

⁸ Doug Head of Orlando



Policy Issues:

- With a population of 76,110, the district above is too small to meet the ideal population for a House district and more communities would need to be added to it. During the testimony it was mentioned that this district should include portions of West Orange County. West Orange County was not clearly defined.
- Since the two cities are not contiguous, more geography would need to be added to the district in order to make it so.
- If the district were to connect the cities to the east of Lake Apopka, it would be impossible to do so without including portions of the City of Ocoee.

- Using the city boundaries of Apopka and Winter Garden create holes that would need to be addressed. Also, using these boundaries as the district line would split several VTDs.