

Lakeland Public Input Meeting
July 25, 2011 – 2 p.m.
Post-Public Input Meeting Report

The purpose of this document is to summarize specific district map-drawing suggestions from the Fort Walton Beach public meetings on July 25, 2011. Therefore, the comments in this document will focus on specific instructions provided by Florida residents participating in these meetings.

Other comments that were either not specific on how to draw a map or that were editorial in nature will not be included in this document. For all of the comments in their entirety, please see the meeting transcript, video and/or podcast via www.floridaredistricting.org.

The following encapsulates comments from persons who spoke and/or submitted written comments for the Lakeland public meeting. To make it clear, these are the public's suggestions. This document does not necessarily reflect the opinion of the Florida Legislature.

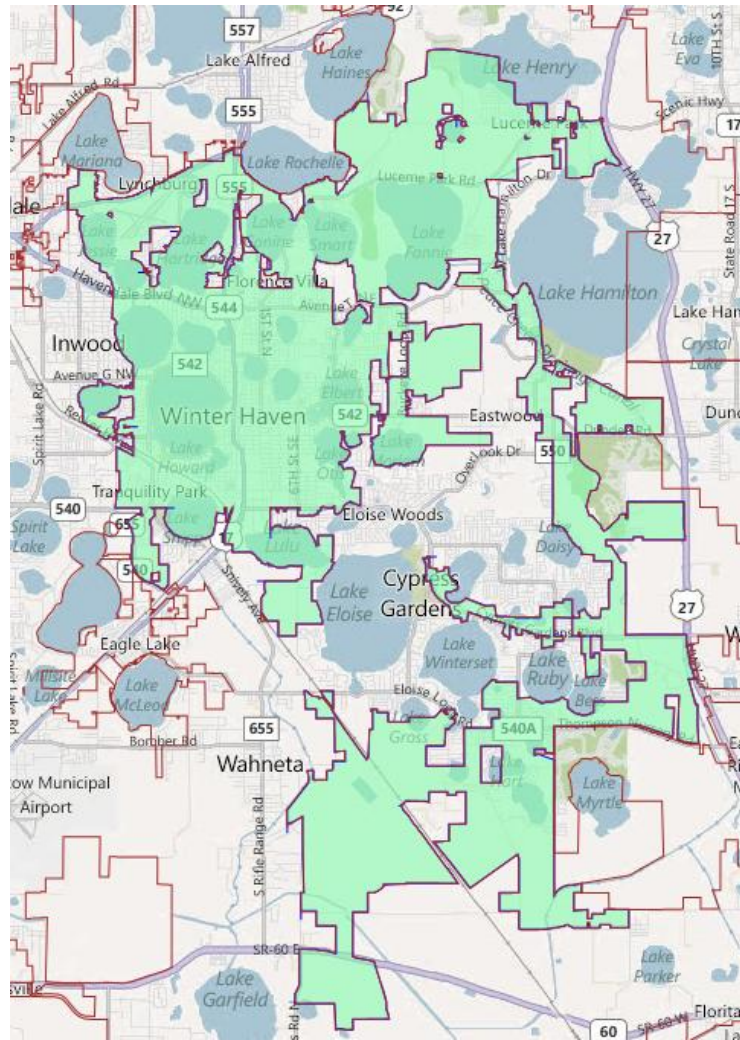
Specific Map-Drawing Testimony-Lakeland Public Hearings

July 25, 2011

Cent-1: Keep the City of Winter Haven Whole

Description: Currently, the City of Winter Haven is split between two districts (in the House map). This should not be. It does not provide for fair representation.¹

Visual: Keeping the City of Winter Haven whole look like this:



¹ Karen Welzel of Winter Haven

Policy Issues:

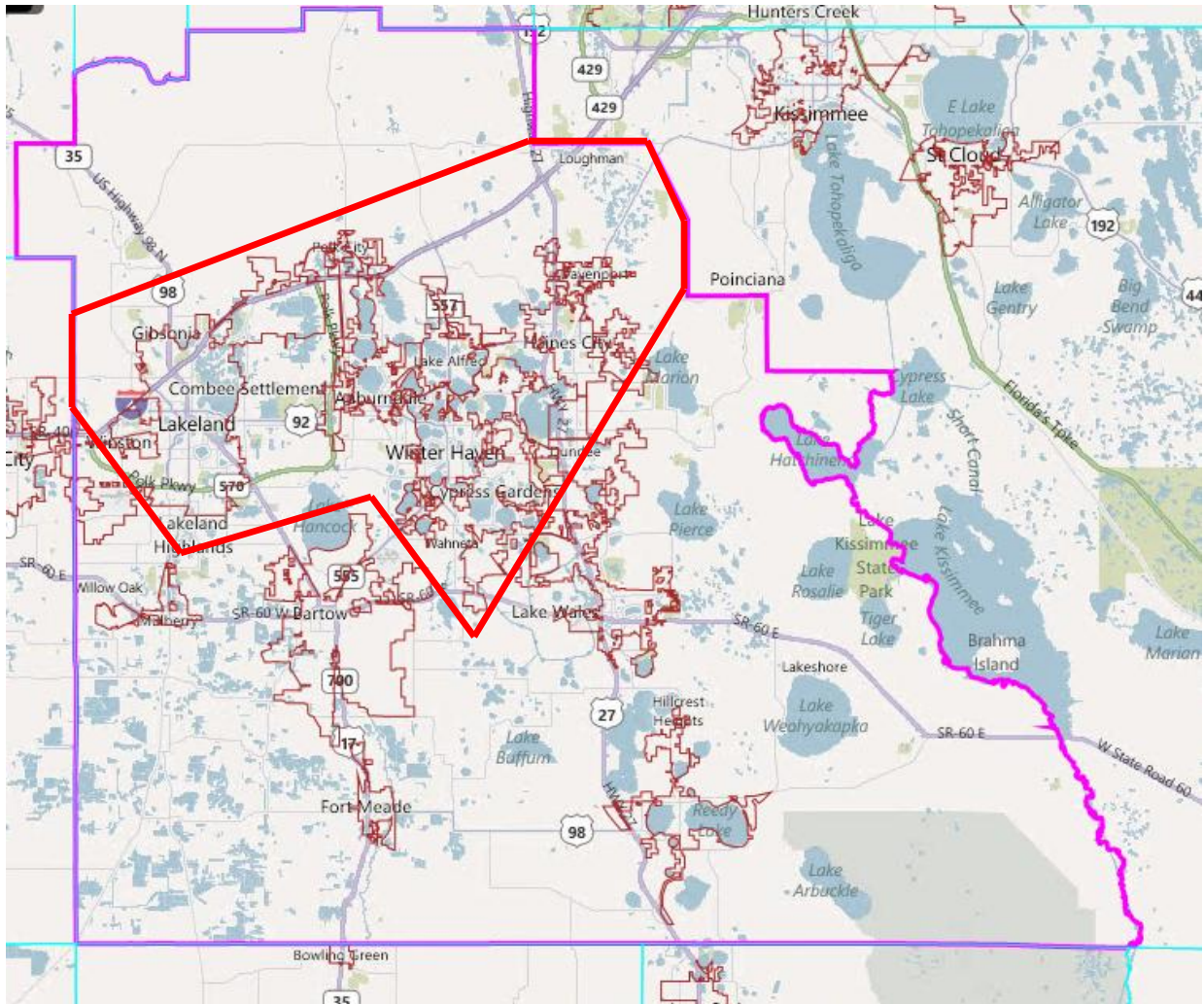
- With a population of 33,874, more communities would need to be added to Winter Haven in order to meet the ideal population for a House, Senate or Congressional district.
- A district following the boundaries of the City of Winter Haven would have holes within it that would need to be addressed.

Cent-2: Keep the cities of Winter Haven and Lakeland, as well as Northeast Polk County, Separate from the Rest of Polk County

Description: Keep Winter Haven, Lakeland, and the Northeast portion of Polk County, which is a new population growth area, district from the agricultural areas that make up the rest of the county. Do not dilute the representation of the agricultural community by adding it to other population centers.²

Visual: The area referenced in the testimony would look like this (area around bold red line):

² Victor Story of Lakes Wales



Policy Issues:

- The comments made were not specific enough to define the meaning of “Northeast Polk County”. More clarification may need to be done in order to determine the area intended.
- Combining the cities of Lakeland and Winter Haven alone would give a district 131,296, which is roughly 25,000 short of the ideal population for a House district. It is also important to note that the two cities are not contiguous of each other and would need to be connected in some way.
- If a district was drawn to mirror the red line above, then Polk County would be split into at least 3 districts.