

Jacksonville Public Input Meetings

July 11, 2011 – 2 p.m. and 6 p.m.

Post-Public Input Meeting Report

The purpose of this document is to summarize specific district map-drawing suggestions from the Jacksonville public meetings on July 11, 2011. Therefore, the comments in this document will focus on specific instructions provided by Florida residents participating in this meeting.

Other comments that were either not specific on how to draw a map or that were editorial in nature will not be included in this document. For all of the comments in their entirety, please see the meeting transcript, video and/or podcast via www.floridaredistricting.org.

The following encapsulates comments from persons who spoke and/or submitted written comments for the Villages public meeting. To make it clear, these are the public's suggestions. This document does not necessarily reflect the opinion of the Florida Legislature.

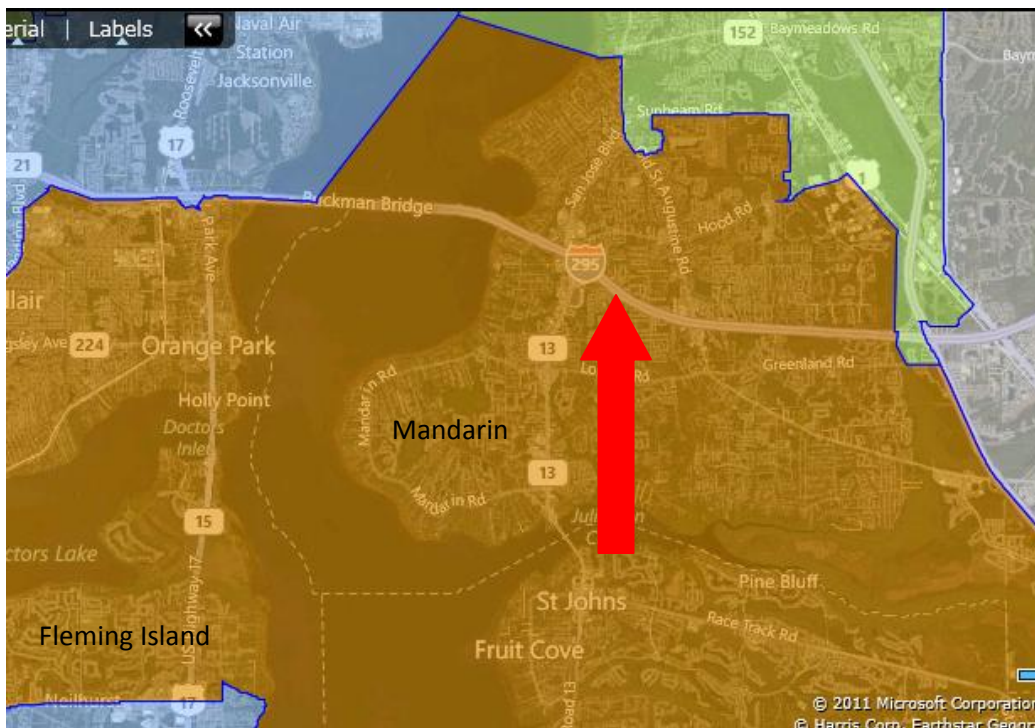
Specific Map-Drawing Testimony-Jacksonville Public Hearings

July 11, 2011

NE/NC-1: Make the Northern Boundary of House District 19 to be Interstate 295 to Keep the Townships of Mandarin and Fleming Island Together, and Take that Remaining Portion and Give it to House District 16

Description: This would be a practical way to keep the similar communities of Fleming Island, Mandarin and others together. Our children play sports together in this community and we all shop and eat within this area together. The district should mirror the community.¹ We live in a big town's small town. It would be disruptive to our neighborhoods to split us up.² When I look at what my community is, I look at where I eat, where I shop, where I worship and where I go to the library. All of which is South of I-295.³

Visual: Currently, House Districts 19 (in brown) and 16 (in green) at I-295 (which is pointed to in red) look like this:

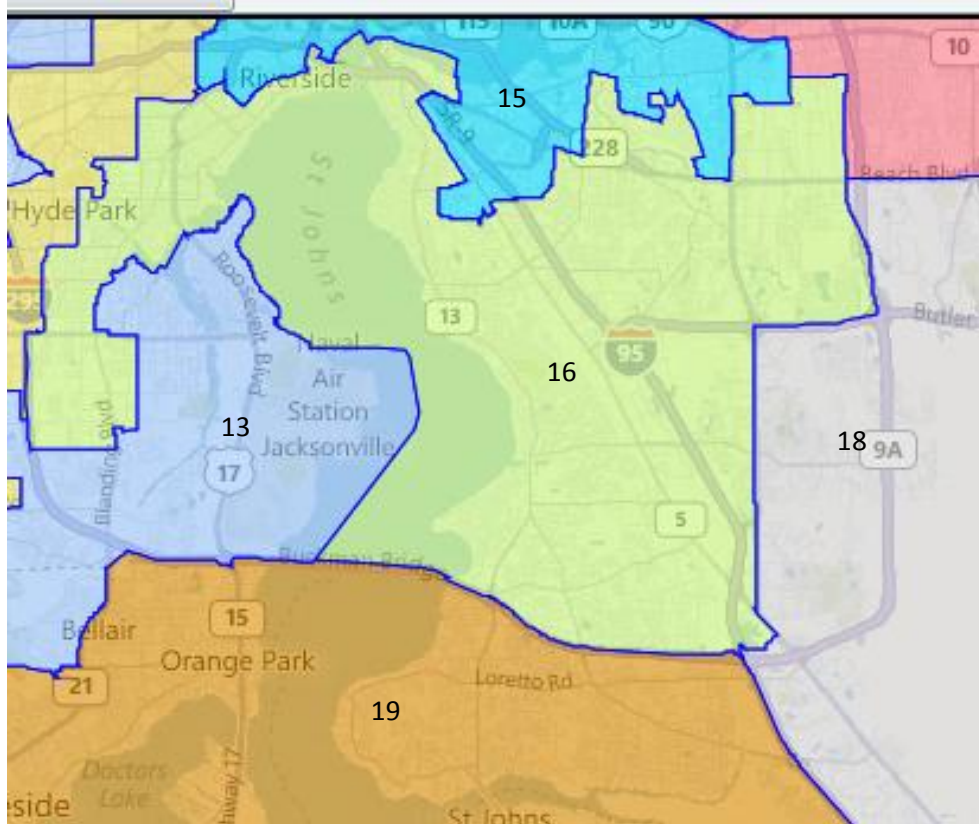


Making the Northern boundary of House District 19 to be I-295 and assigning the remainder of that population to House District 16 would look like this:

¹ Tammy Hardin of St. Augustine

² Barbara Wisnosky of St. Augustine

³ Mike Kuhn of St. Augustine



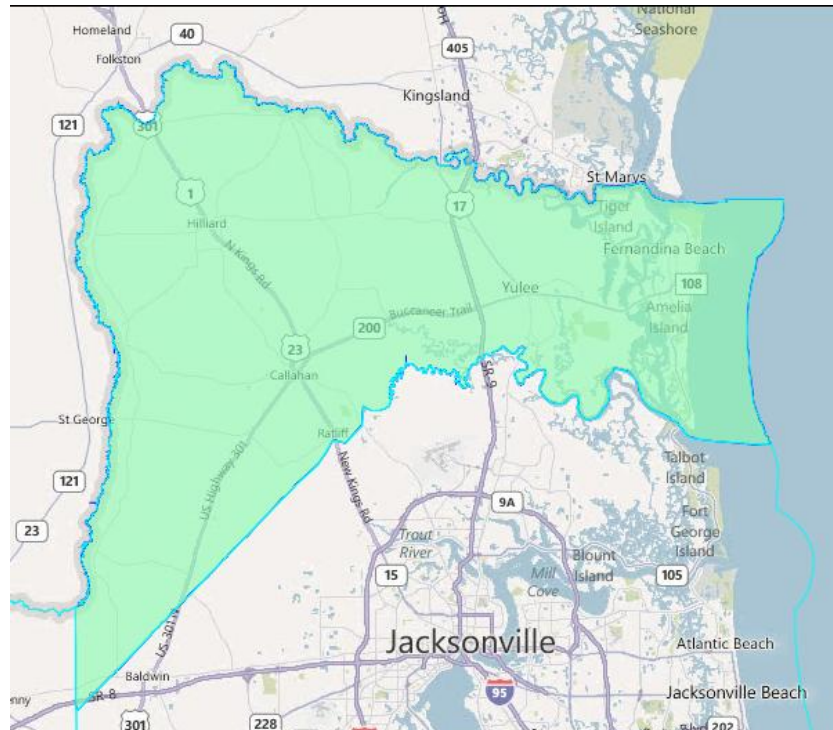
Policy Issues:

- By taking this action, House District 19 now has a population of 148,745, which is roughly 8,000 short of the ideal population, so more communities would need to be added to this district. Conversely, House District 16 is now at a population of 167,311 which is roughly 11,000 over the ideal population, so more population would need to be assigned to another district.
- To have the boundary between the two districts by I-295, at least one VTD would need to be split in order to achieve this.

NE/NC-2: Keep Nassau County Whole

Description: Please keep Nassau County whole and not split into different districts.⁴⁵

Visual: Keeping Nassau County whole would look like this:



Policy Issues:

- With a population of 73,314, Baker County is too small to be an entire House, Senate or Congressional district, so more communities would need to be added to it in order to meet the district's ideal population.

NE/NC-3: Keep Fleming Island Within the Same Congressional District

Description: Keep Fleming Island within the same district, and I would like to vote for the same race as my neighbors.⁶ Where I am in Fleming Island, I am completely divorced from what goes on in Clay County.⁷ We do not have a commonality of interests with Congressional District 3.⁸

⁴ Jim Last of Fernandina Beach

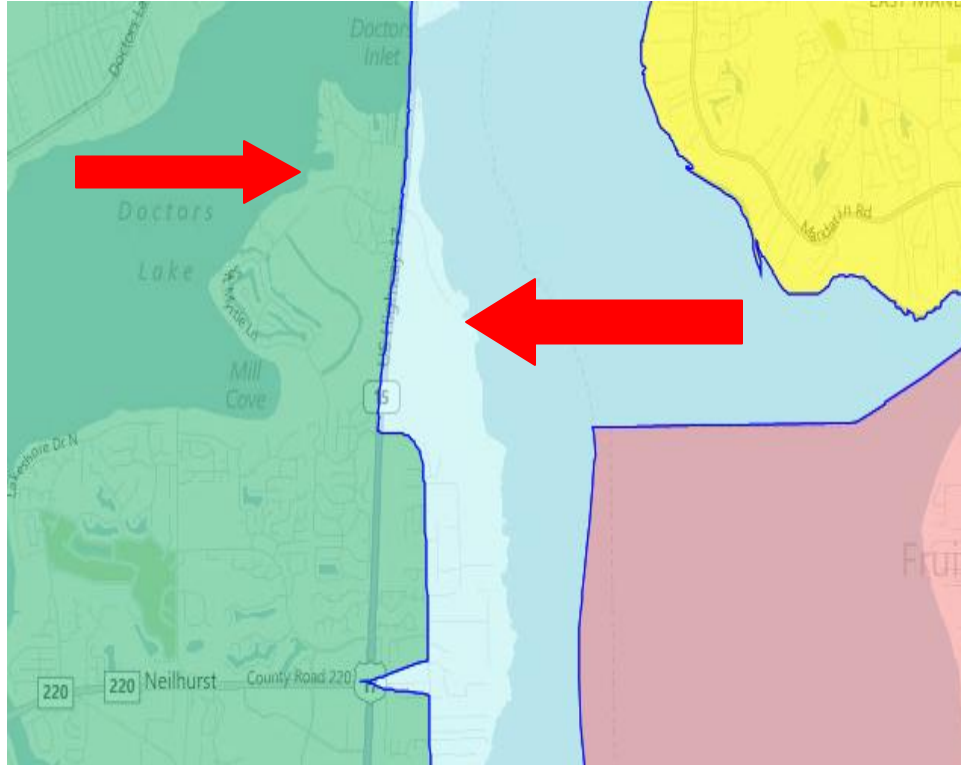
⁵ Mary Downey of Fernandina Beach

⁶ Raymond Chute of Fleming Island

⁷ Thomas Watson of Fleming Island

⁸ Lynne Watson of Fleming Island

Visual: Currently, the Fleming Island area (pointed to with red arrows) of Clay County is split between Congressional districts 3 (in blue) and 6 (in green) and looks like this:



Policy Issues:

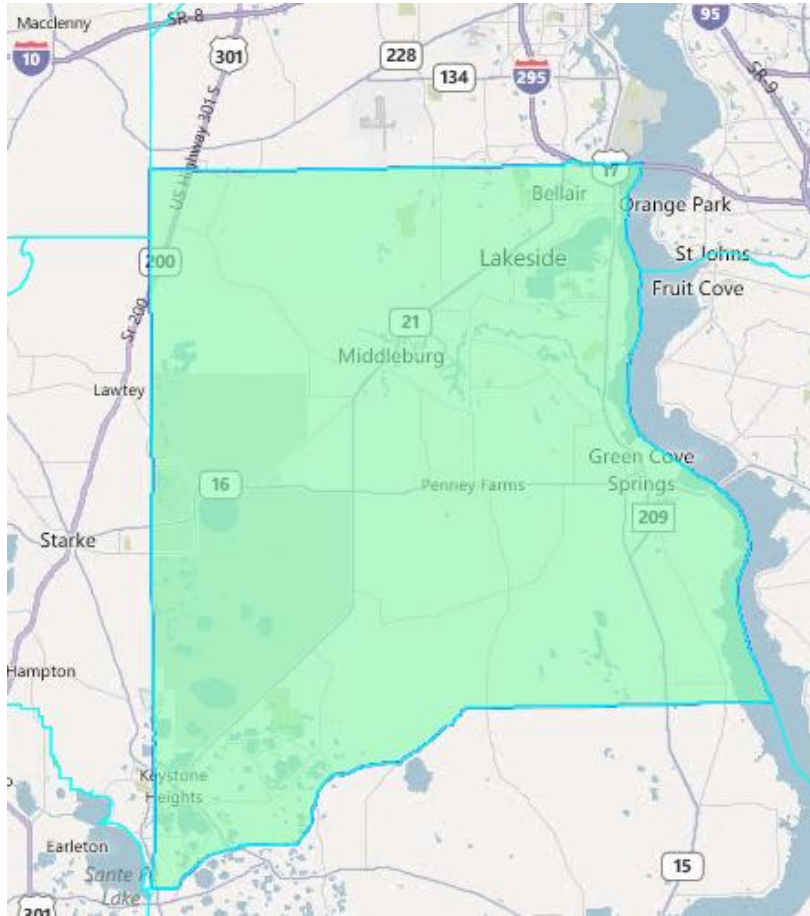
- Under the current Congressional map, if District 6 were to contain all of Fleming Island, then there would be contiguity issues with District 3. Those issues would not exist if District 3 were to contain all of Fleming Island.
- Currently, District 3 is considered to be a minority-access seat under the federal Voting Rights Act.

NE/NC-4: Keep Clay County Whole

Description: Clay County has its own unique personality that contains both urban and rural areas. Our values are Old Florida, influenced by newcomers and our military. Our issues could become sublimated with Duval County if we aren't kept whole. Our perspective and outlook should be preserved.⁹ We want to be our own selves.¹⁰ If you have to divide us, “please do not divide us among more than two representatives.”¹¹

⁹ Frank Farrell of Orange Park

Visual: Keeping Clay County whole would look like this:



Policy Issues:

- With a population of 190,865, Clay County is too large for the ideal population for a State House district and too small for a Senate or Congressional District.

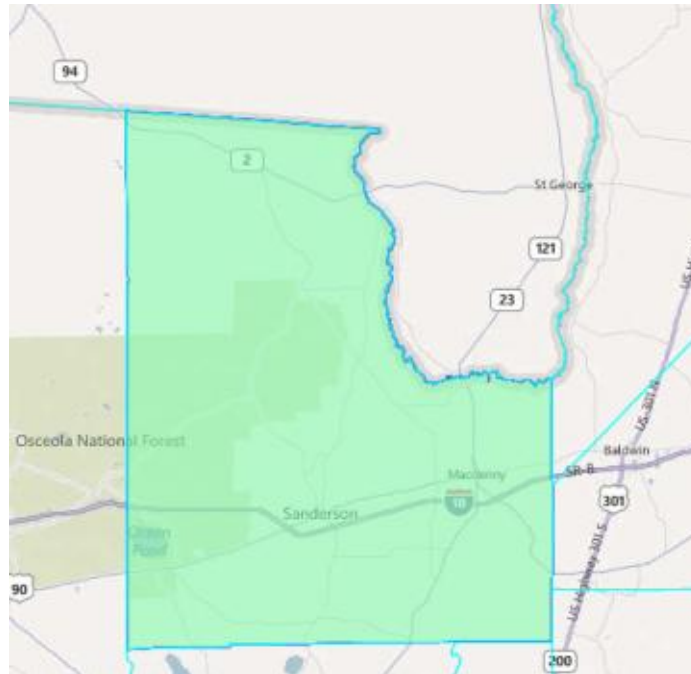
¹⁰ Dee Lansford of Orange Park

¹¹ Wiggins, Ann – Submitted July 11, 2011 via Jacksonville Public Hearing

NE/NC-5: Keep Baker County Whole and Connect It with Other Rural Counties

Description: Keep Baker County whole and connect us with other like-minded, rural counties.¹² It is easier for us to talk to one person.¹³

Visual: Keeping Baker County Whole would look like this:



Policy Issues:

- With a population of 27,115, Baker County is too small to be entire State House, Senate or Congressional district, and other communities would need to be added to it in order to meet the ideal population for a district. Those who spoke in favor of keeping Baker County whole asked that it be added with other rural communities in the formation of a district.

NE/NC-6: Remove the One Precinct of Duval County from House District 12

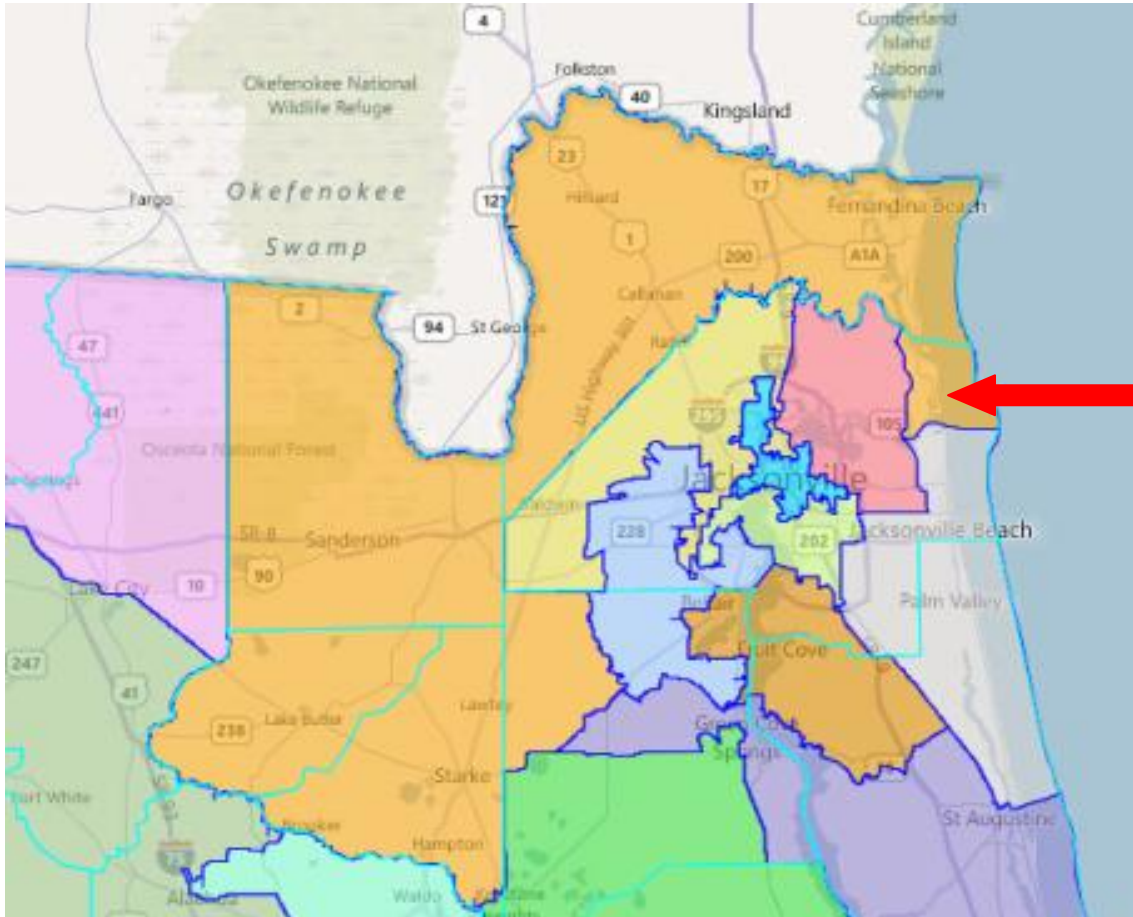
Description: My precinct (11A) is the only precinct in Duval County that belongs to House District 12. We have 315 people in that precinct and I have nothing in common with the

¹² Darryl Register of Macclenny

¹³ Mike Griffis of Glen St. Mary

people in the other counties that are represented in that district. We all work in Jacksonville and our kids go to school in Jacksonville.¹⁴

Visual: Currently, House District 12 (in orange) looks like this (with a red arrow pointing to the Duval County portion of the district):



Policy Issues:

- The current population for House District 12 is 159,354, which is about 2,700 too many for the ideal population.

¹⁴ Lisa King of Jacksonville