

Gainesville Public Input Meeting
July 13, 2011 – 6 p.m.
Post-Public Input Meeting Report

The purpose of this document is to summarize specific district map-drawing suggestions from the Gainesville public meeting on July 13, 2011. Therefore, the comments in this document will focus on specific instructions provided by Florida residents participating in these meetings.

Other comments that were either not specific on how to draw a map or that were editorial in nature will not be included in this document. For all of the comments in their entirety, please see the meeting transcript, video and/or podcast via www.floridaredistricting.org.

The following encapsulates comments from persons who spoke and/or submitted written comments for the Gainesville public meeting. To make it clear, these are the public's suggestions. This document does not necessarily reflect the opinion of the Florida Legislature.

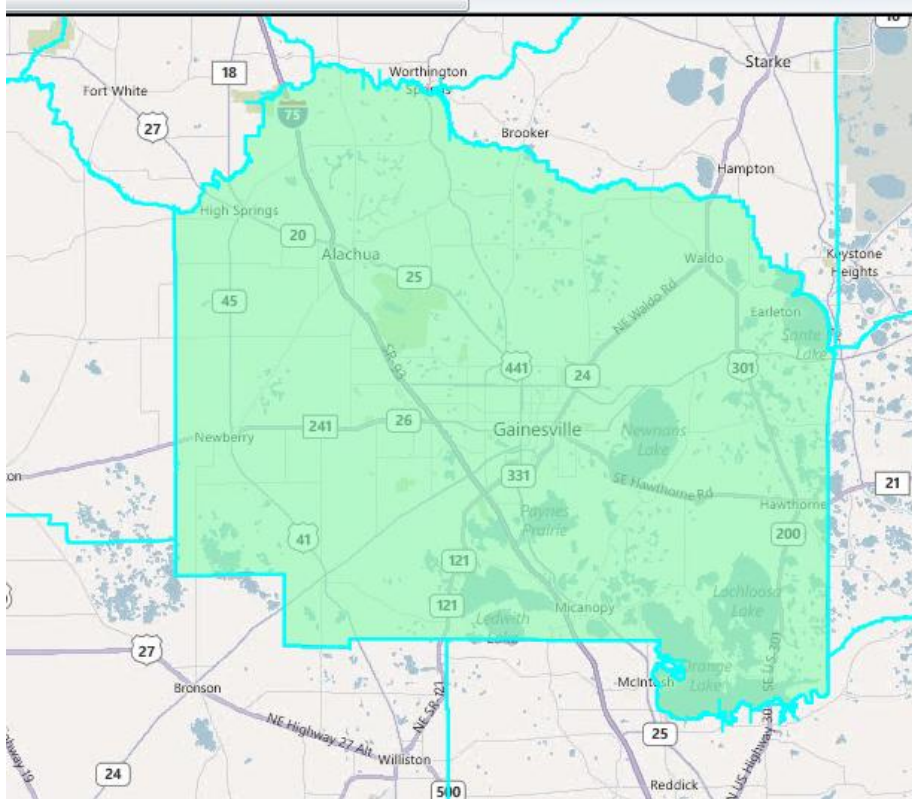
Specific Map-Drawing Testimony-Gainesville Public Hearing

July 13, 2011

NE/NC-22: Keep Alachua County Whole

Description: Keep counties whole in the redistricting process, especially Alachua County.¹

Visual: Keeping Alachua County whole would look like this:



Policy Issues:

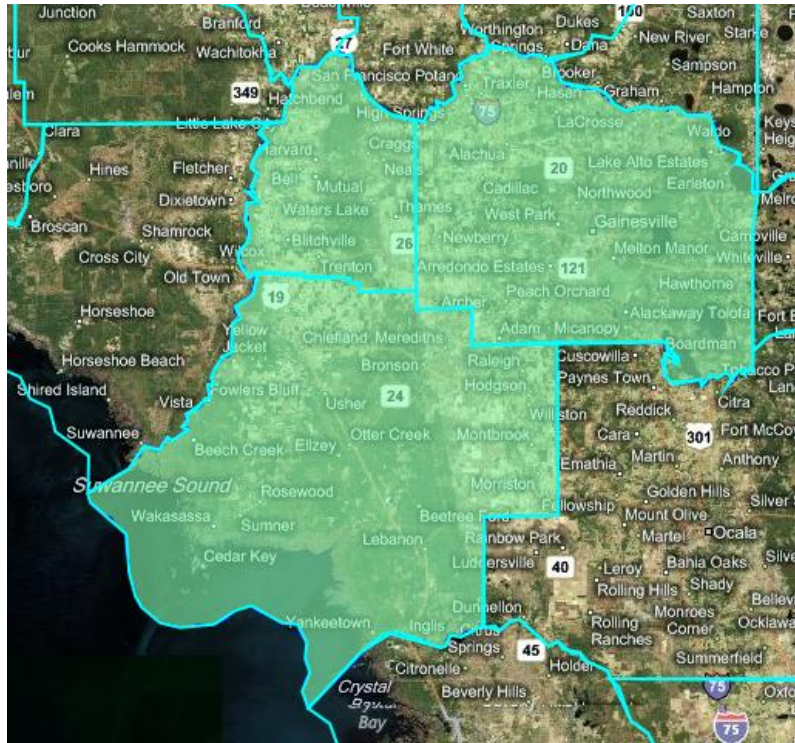
- With a population of 247,336, Alachua County is too large for a State House district and would need to be divided amongst at least two districts. The County could be kept whole in either a State Senate or Congressional district.
- Currently, a State House district containing parts of Alachua County is a minority access seat.

¹ Fred Pratt of Gainesville

NE/NC-23: Keep Gilchrist and Levy Counties Together and link them to Alachua County

Description: If you look at the urban areas of Alachua County and look at Gilchrist County and Levy County, these are the things that could meet the ideal population.²

Visual: Connecting Alachua, Gilchrist and Levy Counties would look like this:



Policy Issues:

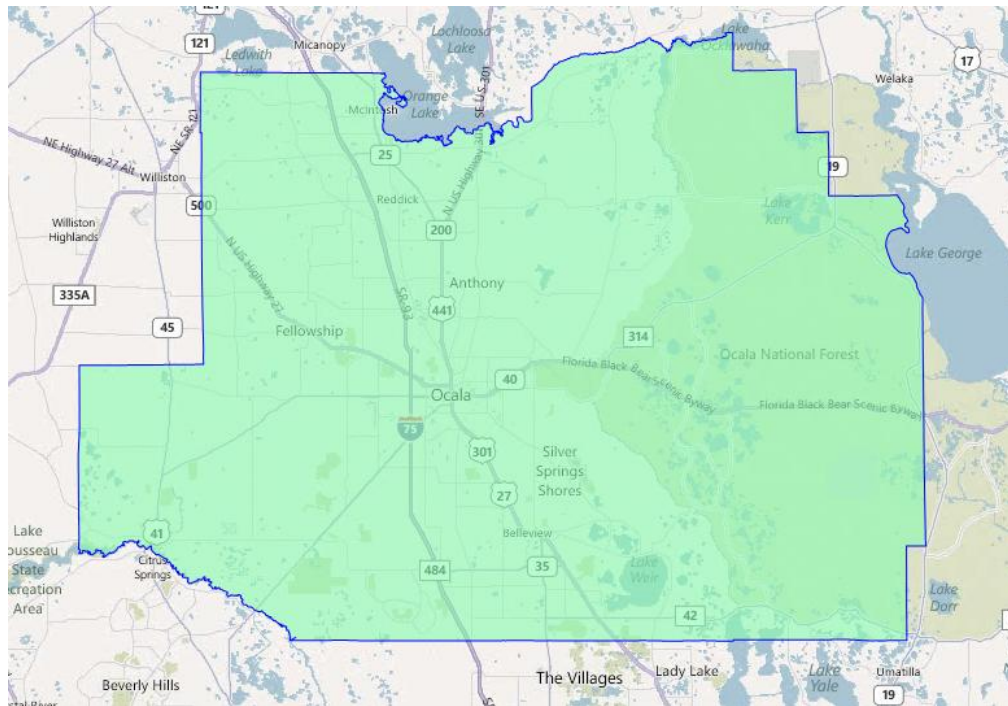
- Combining these three counties would be a population of 305,076. This population is too large for a House district, but could be included in parts of a Senate or Congressional district.
- Other than population numbers, no other reason was given in the testimony as to why these counties should be linked.

² Gunnar Paulson of Gainesville

NE/NC-24: Keep Marion County Whole

Description: “We implore you to consider the significance of Marion County, and its five municipalities of Ocala, Belleview, Dunnellon, McIntosh and Reddick, as a designated community of interest in your redistricting process.”³ “To meet the unique and diverse needs of our community, equitable and focused representation is essential to provide a unified legislative voice for the citizens of Marion County. A unified legislative voice is crucial to the future prosperity of Marion County to compliment a healthy business environment and economy as well as contribute to the quality of life for all its citizens.”⁴ “Marion County should be treated as a single entity. Please treat us fairly and as one unit.”⁵ We would like to ask to keep al of Marion County together.⁶ “We asking that you consider Marion County’s compactness and growth as you go through the redistricting process. Marion County has 331,000 citizens and the fifth largest land mass in Florida, but was split in the last redistricting process into 4 Florida Senate seats and 5 Florida Representative districts. Presently, only 1 of our 9 legislative delegation members resides in our county... We have not had a senator from Marion County in more than 20 years...”⁷

Visual: Keeping Marion County whole looks like this:



Policy Issues:

³ Letter signed by Reginald Landers and Roy Abshien. Mr. Abshien of Belleview testified during the meeting.

⁴ Resolution of the Ocala-Marion County Chamber of Commerce, presented by the testimony of Tamara Fleischhaker of Ocala

⁵ Marcel “Butch” Verrando of Dunnellon

⁶ Whitey Markle of Citra

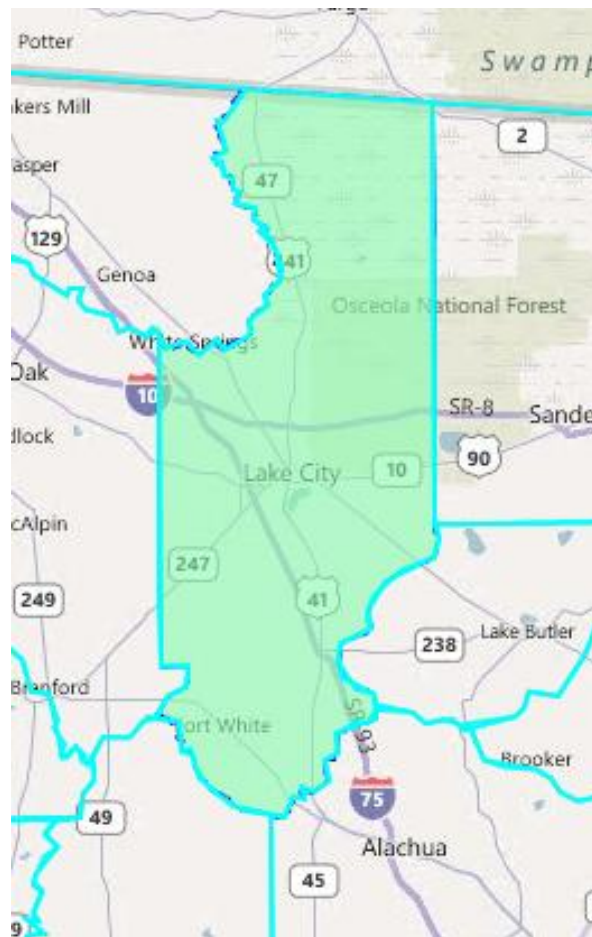
⁷ McClain, Stan (Marion County Commission) – Submitted July 13, 2011 via Gainesville Public Hearing

- With a population of 331,298, Marion County is too large for a single House district, and would need to be divided into at least two districts. The county potentially could be kept whole and added to other communities to complete a Senate or Congressional district.

NE/NC-25: Keep Columbia County Whole

Description: We would prefer to see Columbia County whole instead of having four representatives in Tallahassee. If this were done, our representative would be from around here and would listen to us. It was also minimize voter confusion in our community.⁸

Visual: Keeping Columbia County whole would look like this:



Policy Issues:

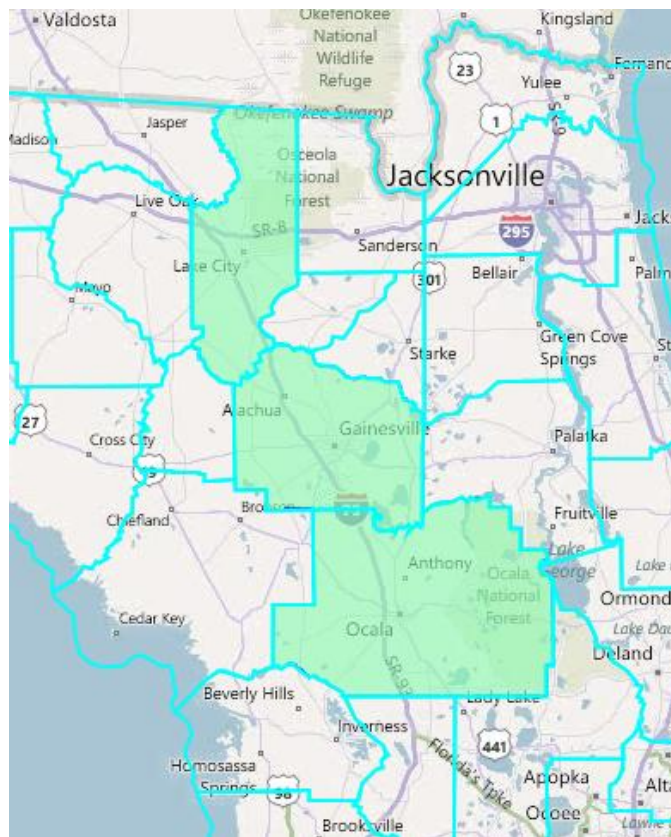
- With a population of 67,531, more communities would need to be added to a House, Senate and Congressional district that kept Columbia County whole.

⁸ Alton Hines of Lake City

NE/NC-26: Combine Alachua, Marion and Columbia Counties to create a Congressional District

Description: Alachua County is really a part of North Central Florida, and the residents of that county should not have to drive to Orlando or Jacksonville to see their member of Congress.⁹

Visual: Combining Alachua, Marion and Columbia County into a Congressional district would look like this:



Policy Issues:

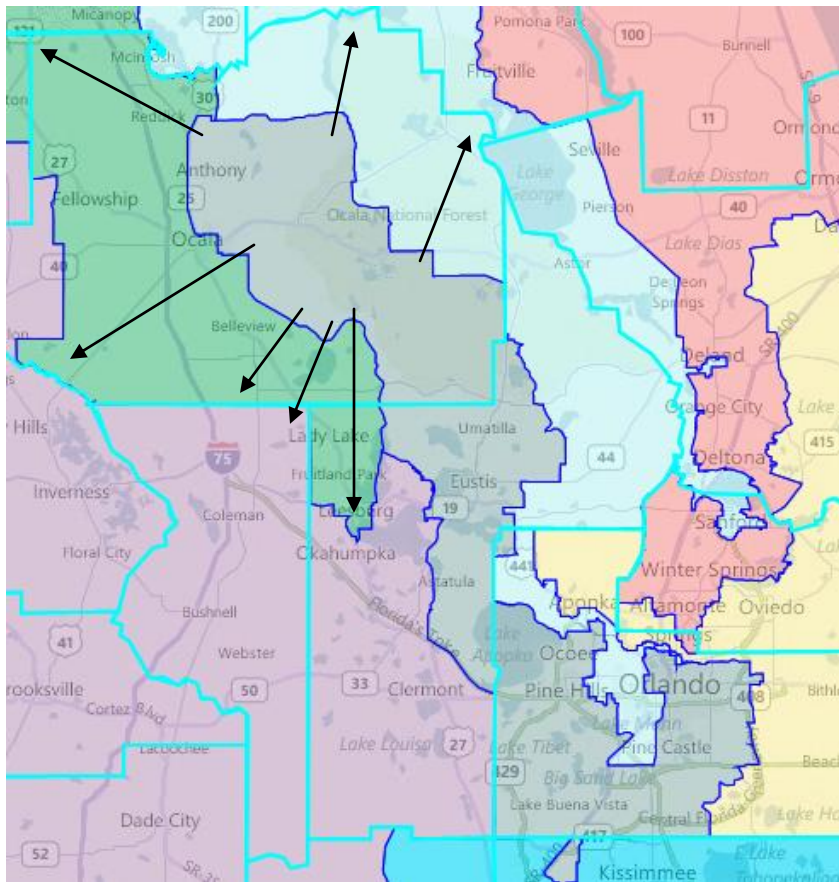
- A Congressional district drawn this way is 50,179 people short of the ideal population and would need to have more communities added to it.

⁹ Terry Martin-Back of Gainesville

NE/NC-27: Make Changes to the Current Congressional District 8 per the Remarks of Commissioner Carl Zalak

Description: Consolidate Congressional District 8 by having all of Marion County connected with all of the Villages, bringing the district north.¹⁰

Visual: Currently, district 8 looks like this (in gray). The arrows indicate where the lines would be moved according to the testimony:



Policy Issues:

- By adding all of the population of Marion County as well as The Villages, it is not certain what areas of the current district would be removed to do so.

¹⁰ Marion County Commissioner Carl Zalak

- This change would also significantly impact current Congressional Districts 3 and 6.