

Daytona Beach Public Input Meeting
July 12, 2011 – 6 p.m.
Post-Public Input Meeting Report

The purpose of this document is to summarize specific district map-drawing suggestions from the Daytona Beach public meeting on July 12, 2011. Therefore, the comments in this document will focus on specific instructions provided by Florida residents participating in these meetings.

Other comments that were either not specific on how to draw a map or that were editorial in nature will not be included in this document. For all of the comments in their entirety, please see the meeting transcript, video and/or podcast via www.floridaredistricting.org.

The following encapsulates comments from persons who spoke and/or submitted written comments for the Gainesville public meeting. To make it clear, these are the public's suggestions. This document does not necessarily reflect the opinion of the Florida Legislature.

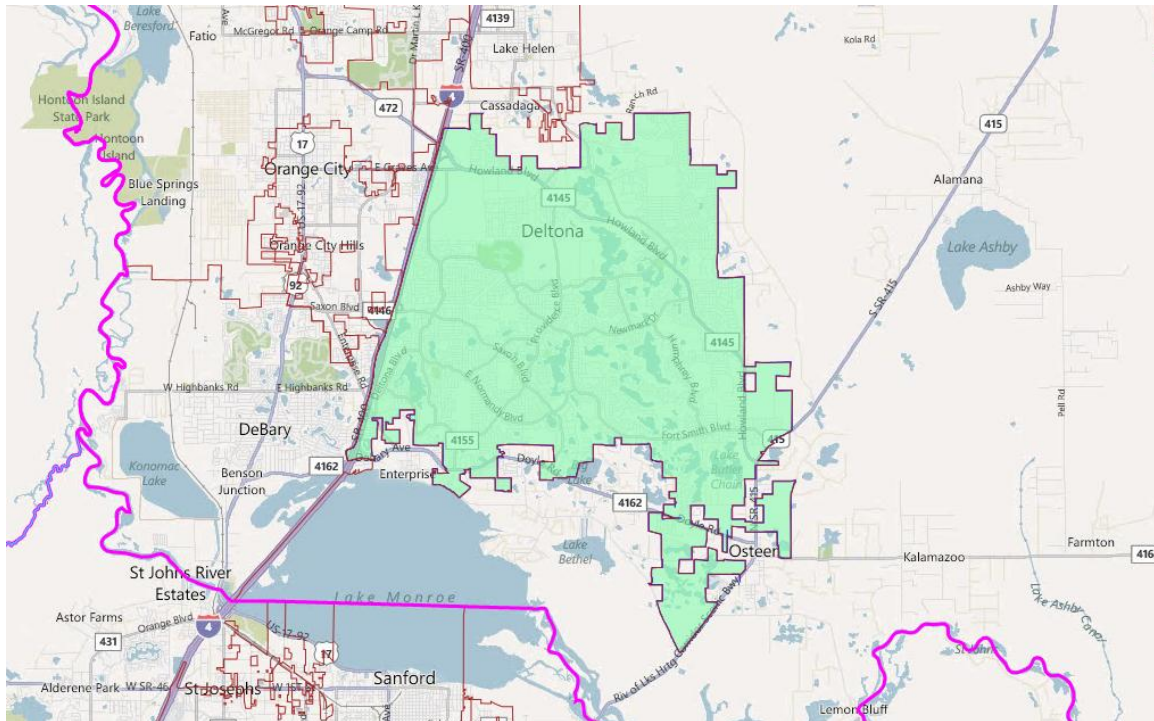
Specific Map-Drawing Testimony-Daytona Beach Public Hearing

July 12, 2011

NE/NC-10: Keep the City of Deltona Whole

Description: “Currently the City of Deltona in Volusia County is divided into 4 State House districts, 2 State Senate Districts, and 2 Congressional Districts.”¹ None of our representatives herein Deltona are from Deltona. Keep us whole within a Congressional, Senate and House district.²³ We are the largest city in Volusia County. The current lines have diluted our citizens’ representation. When a representative has a small part of the city, the residents don’t know who their representative is. This encourages voter apathy.⁴

Visual: Keeping Deltona whole would look like this:



Policy Issues:

¹ Walker, Lisa – Submitted June 18, 2011 via WordPress

² Lisa Walker of Deltona

³ Johnson, Judy – Submitted August 7, 2011 via Email

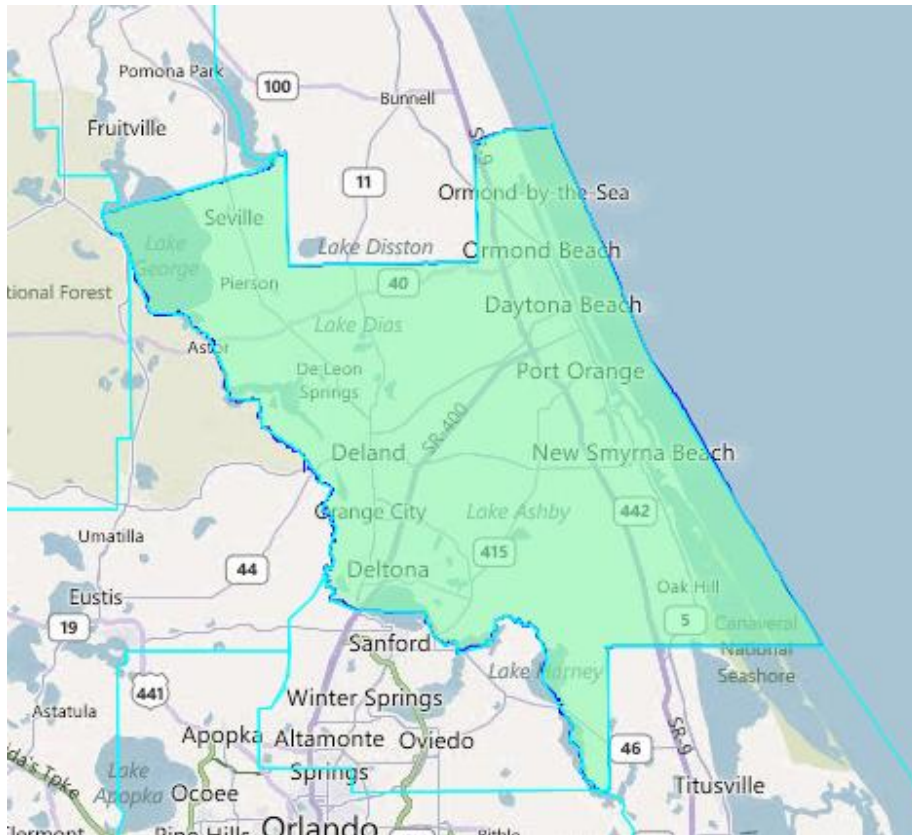
⁴ Commissioner Heidi Herzberg, City of Deltona

- With a population of 85,182 Deltona is too small for a State House, State Senate or Congressional district and would need to communities added to it in order to meet the ideal population.
- The city boundaries of Deltona would create some holes that would need to be addressed if it were kept whole within a district.

NE/NC-11: Have Majority of a Senate District Based in Volusia County

Description: Please consider having the majority of a State Senate seat based in Volusia County.⁵ Please make the core of Senate District 7 be in Volusia County.⁶ The Volusia County Council “request that the new boundaries that are drawn make Volusia County the core of Senate District 7.”⁷

Visual: A Senate District that has all of Volusia County in it would look like this:



Policy Issue:

⁵ Ellen Darden of New Smyrna Beach

⁶ Councilman Andy Kelly, Volusia County

⁷ Bruno Jr., Frank T. (Volusia County Council) – Submitted July 12, 2011 via Daytona Beach Public Hearing.

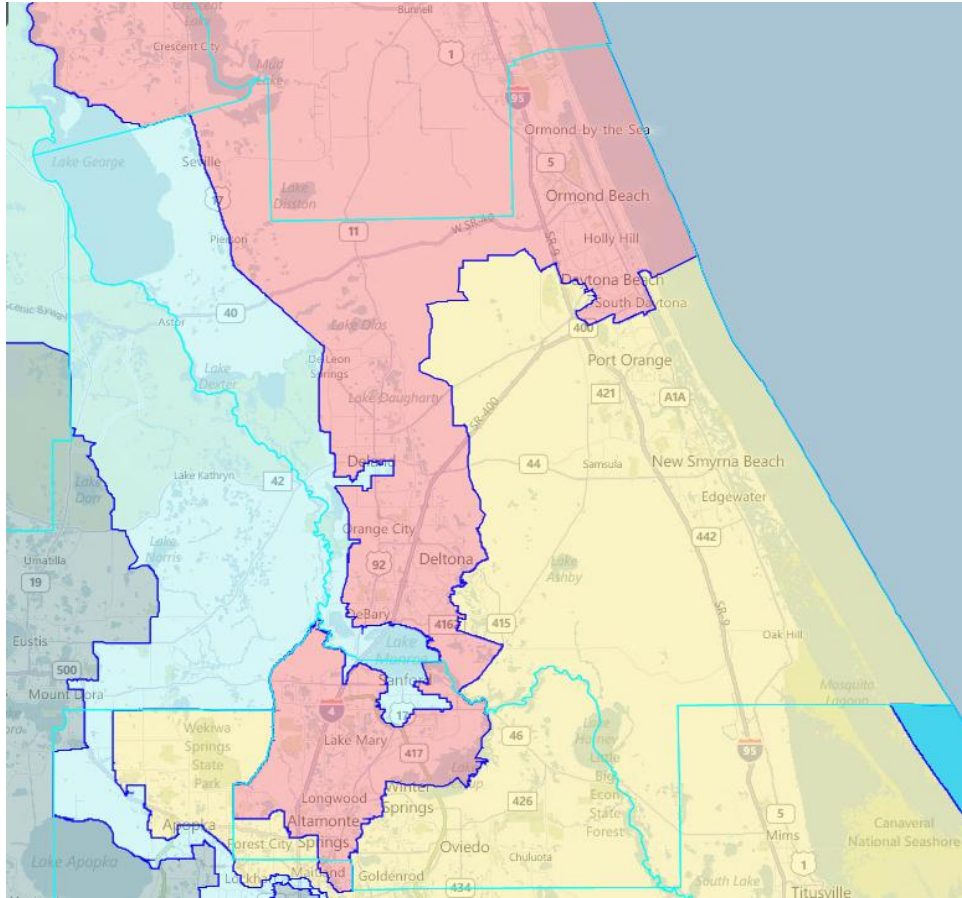
- With a population of 494,593, Volusia County is too large to be contained with one State Senate seat. However, to create a Senate seat with a majority of its population within the county, there would be many ways to create that with a county with such a large population.

NE/NC-12: Remove Volusia County from Congressional District 3 and Place All of the County into either District 24 or District 7

Description: Years ago, all of Volusia County was in one Congressional district. Over the years that county has been carved up and we are now in three districts. Rep. Corrine Brown lives too far away from us and Volusia County should be removed from District 3. Then, all of the county should either go into District 24 or District 7, whichever is easier for the Legislature.⁸

Visual: On the Congressional map, Volusia County currently looks like this (with District 3 in light blue, District 7 light red in and District 24 in beige):

⁸ Peter Kouracos of New Smyrna Beach



Policy Issues:

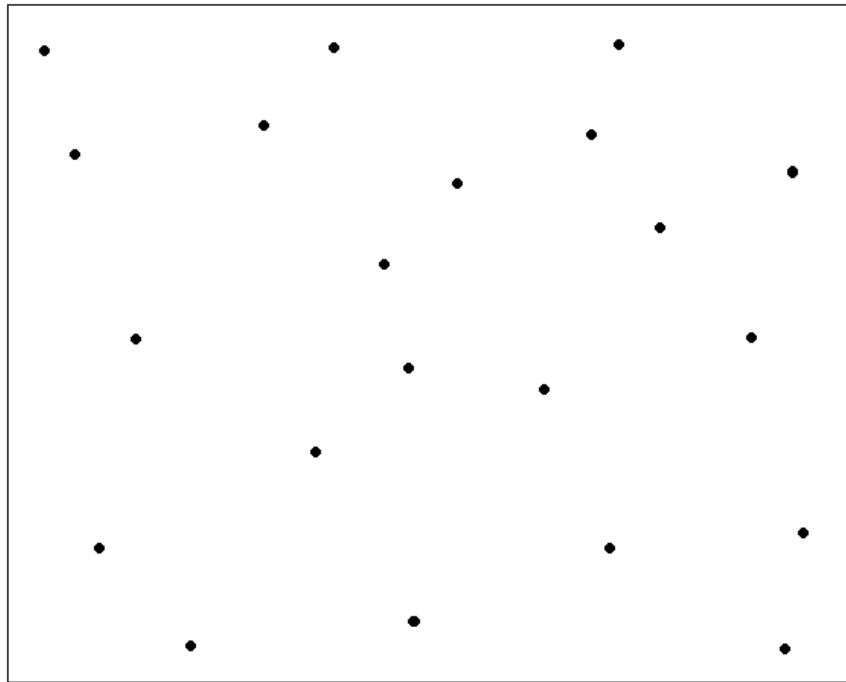
- Congressional District 3, which is currently a minority-access seat under the federal Voting Rights Act, needs to gain 37,289 people in order for it to meet the ideal population for a district.
- District 7, which is currently located in St. Johns, Flagler, Volusia, Seminole and Orange Counties, needs to lose 116,098 people in order to meet the ideal population for a district.
- District 24, which is currently located in Volusia, Seminole, Orange and Brevard Counties, needs to lost 102,889 people in order to meet the ideal population.

NE/NC-13: Nest Three House Districts within a Senate District

Description: Volusia County has four State Senators and 6 Representatives, which is 10% of the Senate and 5% of the House. Are we overrepresented in the Senate or underrepresented in the House? With 40 Senators and 120 Representatives, you should nest three House districts in

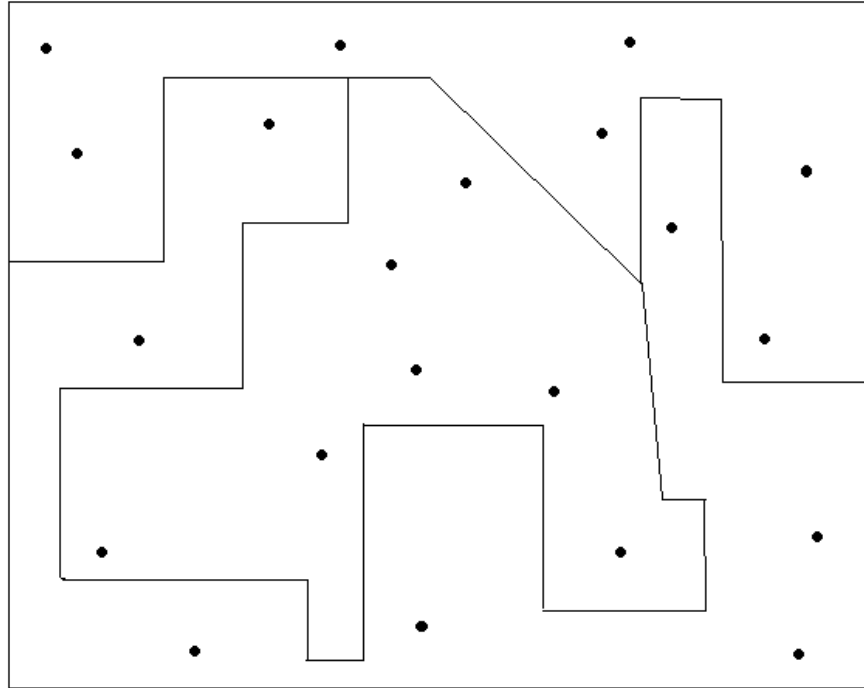
every Senate district. This would eliminate a lot of the problems we have now with overlapping districts.⁹

Visual: Using the illustrations below, a Senate district will be dividing into three equal portions so that three House districts are “nested” within the Senate district.



The square dots within it represent an entire State Senate district and its population. Using the concept of nesting, each House district will have an equal amount of population and each House district’s boundaries will be nested within the Senate district.

⁹ Harry Rosenthal of Daytona Beach



Policy Issues:

- If a county or municipality were split in a Senate district that would ensure that the municipality would also be split within the House districts as well. VTDs may also need to be split in order to achieve nesting as well.

NE/NC-14: City of Ormond Beach Whole in House District 26¹⁰

Description: “The City of Ormond Beach voted unanimously to request that your committee include the entire city limits of Ormond Beach within the boundaries of the revised (House) District 26.”

Visual: The boundary lines of the existing State House District 26, with the addition of those portions of the City of Ormond Beach that are not currently in the district.

¹⁰ Kelley, Ed (City of Ormond Beach) – Submitted July 12, 2011 via Daytona Beach Public Hearing



Policy Issues:

- House District 26 would need to lose 20,905 people to reach the ideal population.
- The boundary lines of Holly Hill are very close to Ormond Beach, and therefore it is difficult to include Ormond Beach, and exclude Holly Hill without building districts at the block level.

NE/NC-15: Keep Flagler County Whole

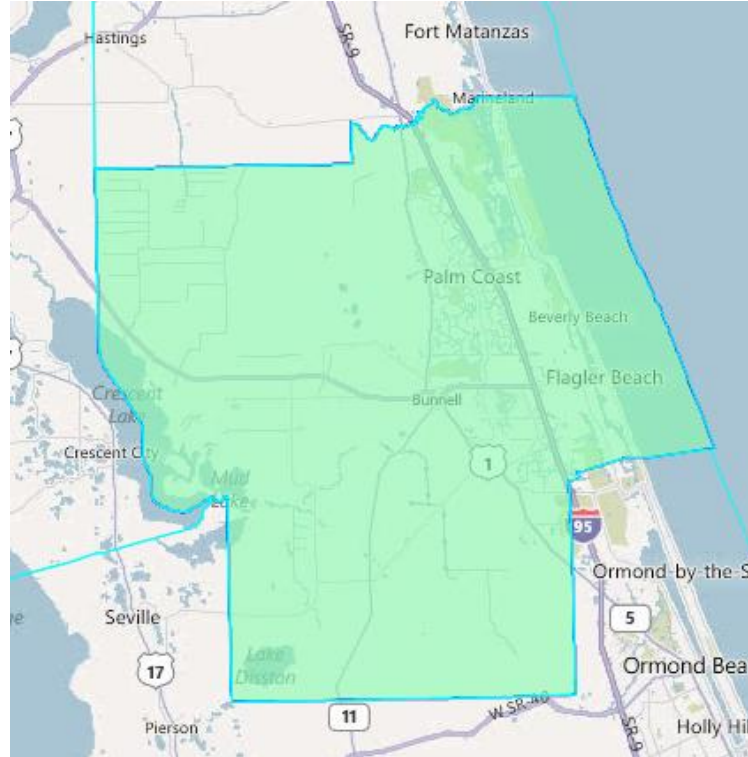
Description: Please keep Flagler County whole. We want one Senator and one Representative.¹¹ We are too small to be broken up so much.¹² The current Senate seat from

¹¹ Sally Sherman of the Flagler County Commission

¹² Carolyn Morgan of Flagler Beach

Duval through Flagler and Volusia makes no sense. Please give us one Senator and one Representative.¹³

Visual: Keeping Flagler County would look like this:



Policy Issues:

- With a population of 95,696, Flagler County is too small to make up an entire House or Senate district, so other communities would need to be added to it in order to meet the ideal population for a House or Senate district.

¹³ Alan Peterson, Chairman of the Flagler County Commission