

Davie Public Input Meeting
August 16, 2011 – 6 p.m.
Post-Public Input Meeting Report

The purpose of this document is to summarize specific district map-drawing suggestions from the Davie public meeting on August 16, 2011. Therefore, the comments in this document will focus on specific instructions provided by Florida residents participating in these meetings.

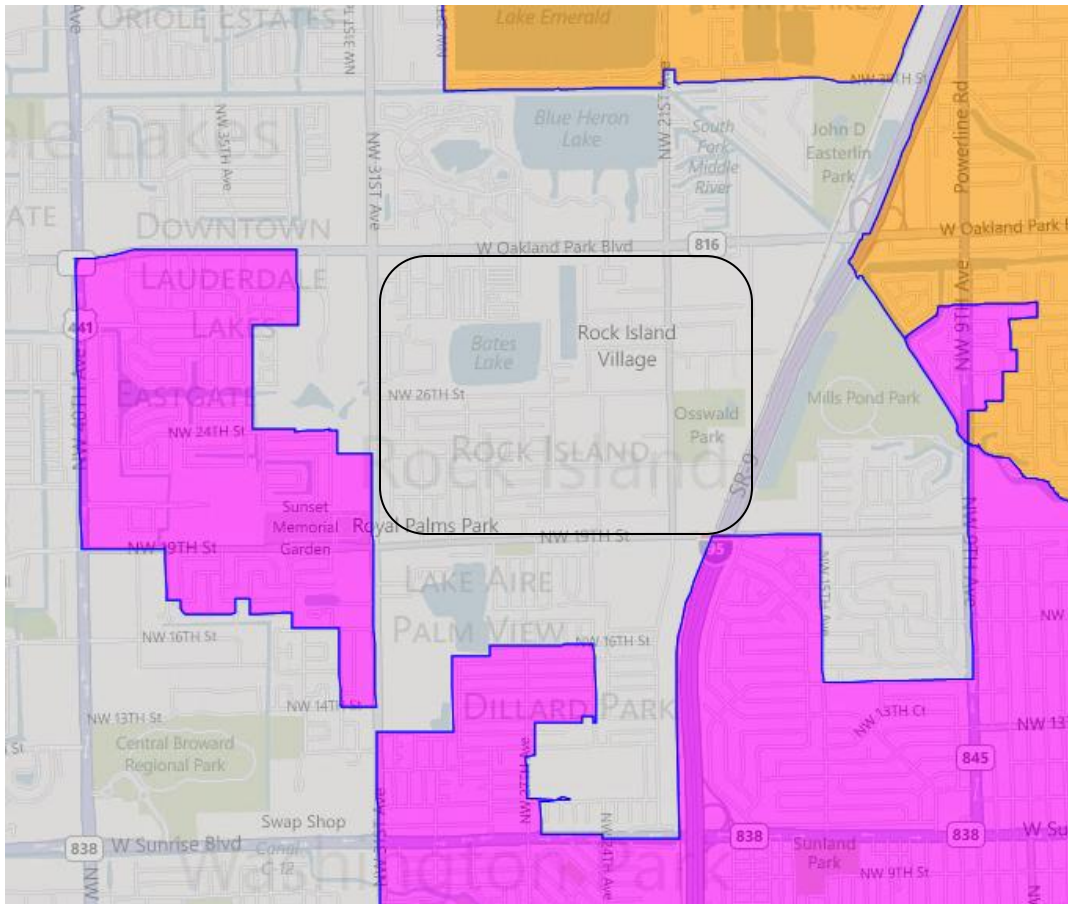
Other comments that were either not specific on how to draw a map or that were editorial in nature will not be included in this document. For all of the comments in their entirety, please see the meeting transcript, video and/or podcast via www.floridaredistricting.org.

The following encapsulates comments from persons who spoke and/or submitted written comments for the Tampa public meeting. To make it clear, these are the public's suggestions. This document does not necessarily reflect the opinion of the Florida Legislature.

E-14: Keep the Community of East Gate Whole within House District 94

Description: Our community, East Gate within Lauderdale Lakes, was split 10 years ago between House Districts 93 and 94. Our community is between Oakland Park Blvd, 31st Avenue, State Road 7 and NW 19th Street. We ask to be put back into House District 94.¹

Visual: Placing all of the East Gate community within House District 94 (in gray) would look like this (with a rounded rectangle around the East Gate community referenced in the testimony):



Policy Issues:

- According to the testimony, the Eastern boundary of the community was State Road 7. After looking at the map and the other streets reference, we believe that the Eastern boundary was supposed to be State Road 9 and that the number seven was given erroneously.

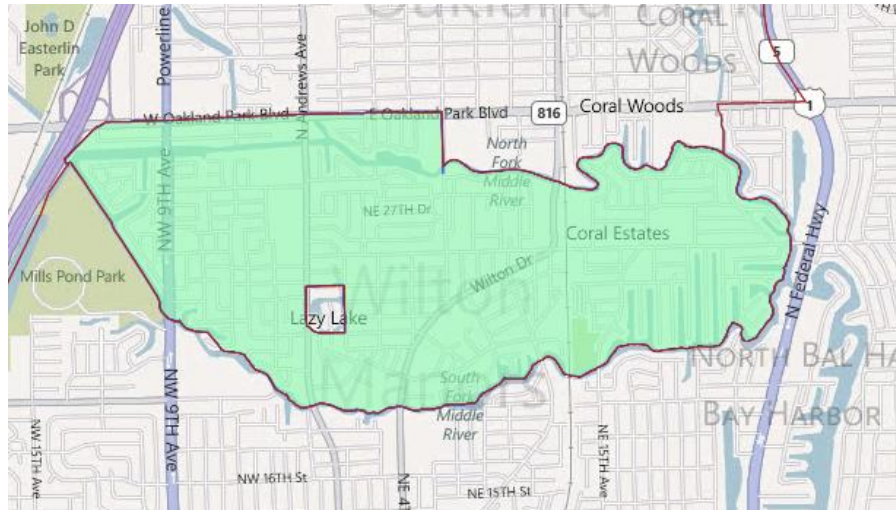
¹ Beverly Williams of

- With a population of 155,371, House District 94 as shown above is just 1,306 people shy of the ideal population for a House district, for a deviation of .9%.
- Removing the East Gate community from House District 93 no longer makes it a contiguous district. Addressing this issue would lead to population changes to House Districts 94 and 93 and possibly others.

SE-15: Keep the Town of Wilton Manors Whole

Description: My town of Wilton Manors is currently split among three Congressional Districts, three Senate Districts and two House districts. We should be whole within each of these maps.²

Visual: The Town of Wilton Manors kept whole in a district would look like this:



Policy Issues:

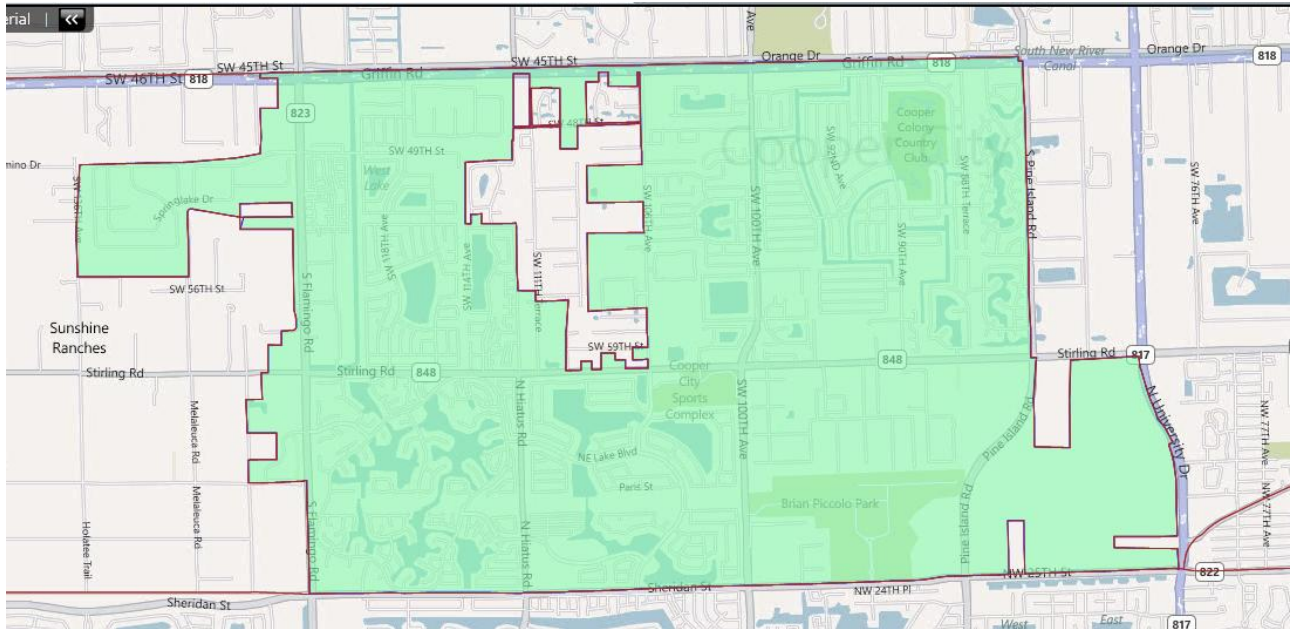
- With a population of 11,632, the Town of Wilton Manors is too small to meet the ideal population of a House, Senate or Congressional district. 145,045 more people would be needed from other communities to complete the House district, as an example.
- Using the town’s boundaries for a district create holes that would need to be addressed.

SE-16: Keep the City of Cooper City Whole

Description: My city of Cooper City is divided and I want to see it put into the same district.³

² Timothy Ross of Wilton Manors

Visual: The City of Cooper City kept whole within one district would look like this:



Policy Issues:

- With a population of 28,547 the City of Cooper City is too small to meet the ideal population of a House, Senate or Congressional district. 128,130 more people would be needed from other communities to complete the House district, as an example.
- If the city's boundaries are used to create a legislative district, that district would have holes that would need to be addressed.

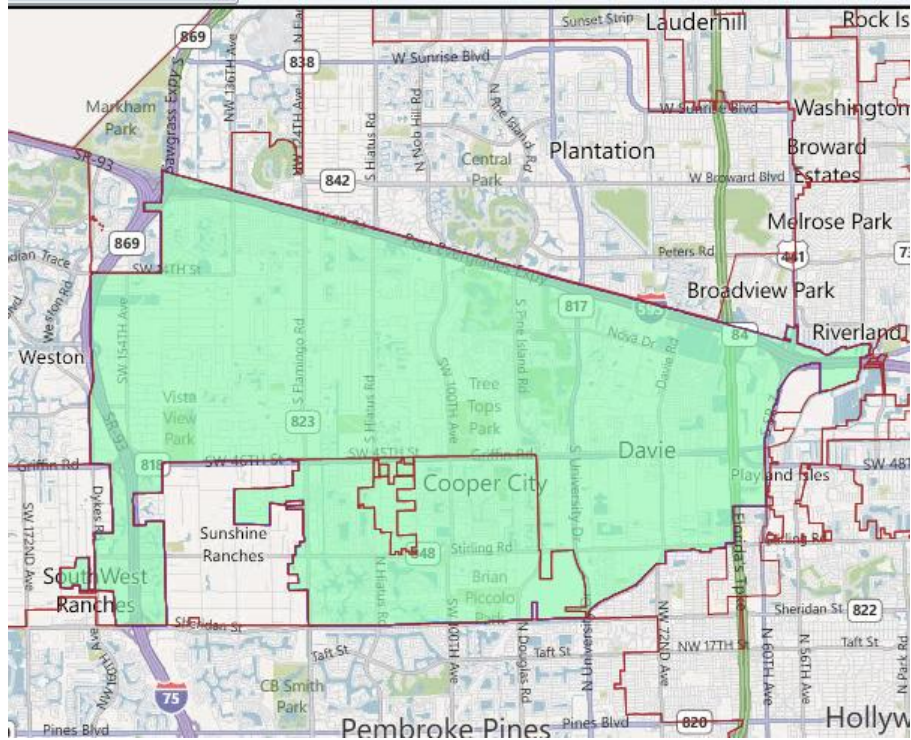
SE-17: Combine the cities of Cooper City and Davie Into a District

Description: If you combined Cooper City and Davie, you would have about half of a House district. They share a lot in common, like a Chamber of Commerce and an equestrian lifestyle.⁴

Visual: Combining all of Cooper City and Davie within one district would look like this:

³ David Brundich of Cooper City

⁴ Steve Moyer of



Policy Issues:

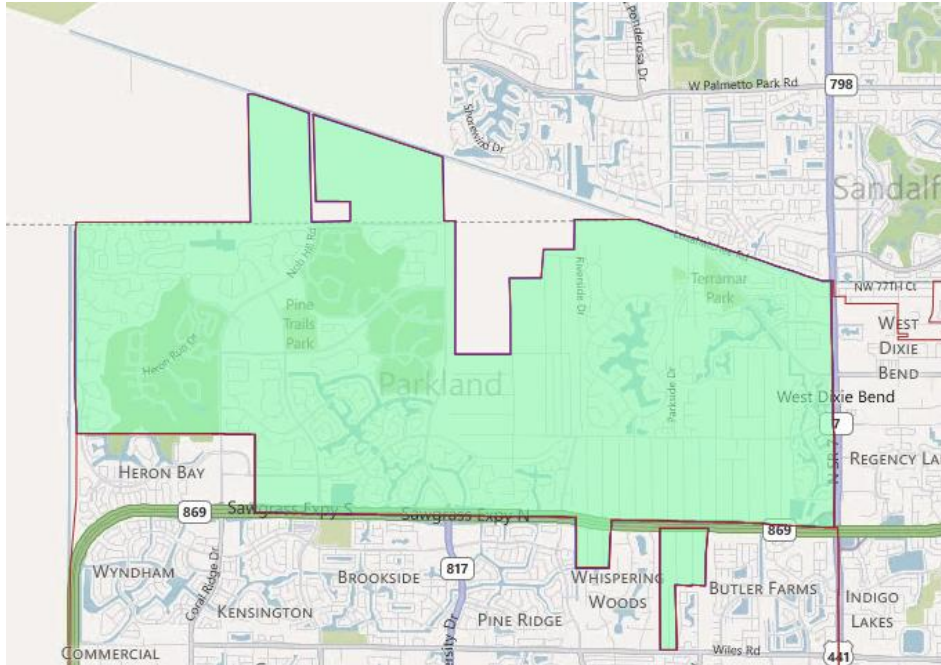
- With a population of 120,539, the district above is too small to meet the ideal population of a House district. 36,138 more people would be needed from other communities to complete the district.
- Using both cities’ boundaries for the district would lead to several VTDs being split.

SE-18: Keep The City of Parkland Whole

Description: I would like to see Parkland kept whole like you did 10 years ago.⁵

Visual: Keeping the City of Parkland whole within a district would look like this:

⁵ Michael



Policy Issues:

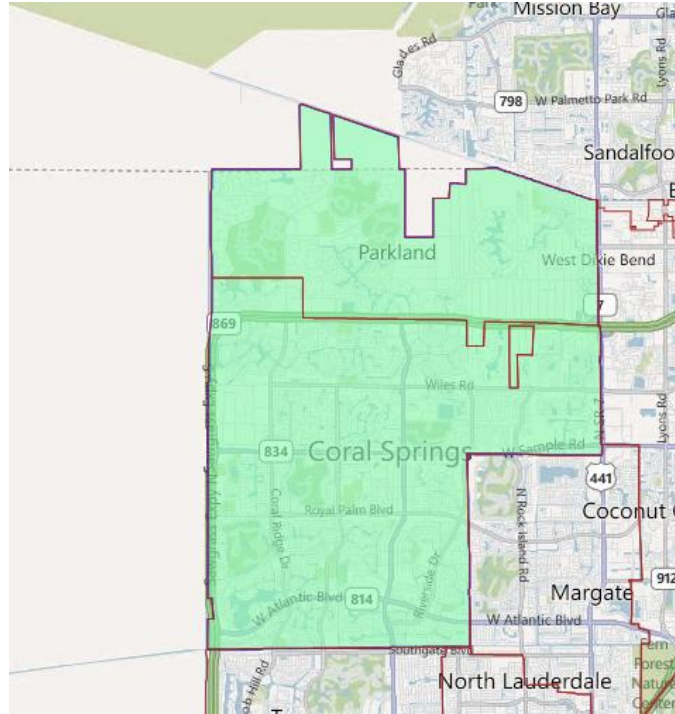
- With a population of 23,962, the City of Parkland is too small to meet the ideal population of a House district. 132,715 more people would be needed from other communities to complete the district.
- Using the city’s boundaries for the district create two areas of land that would need to be joined together within the district to avoid contiguity issues. Doing this also splits several VTDs.

SE-19: Combine the Cities of Parkland and Coral Springs into a District

Description: Parkland should be with Coral Springs. It doesn’t have much in common with Cooper City and Davie.⁶

Visual: Combining Parkland and Coral Springs into a district would look like this:

⁶ Nicolas Steffans of Coconut Creek



Policy Issues:

- With a population of 145,058, the district above is too small to meet the ideal population of a House district. 11,619 more people would need to be added to it to complete the district.
- Using both cities' boundaries for the district result in the splitting of several VTDs.

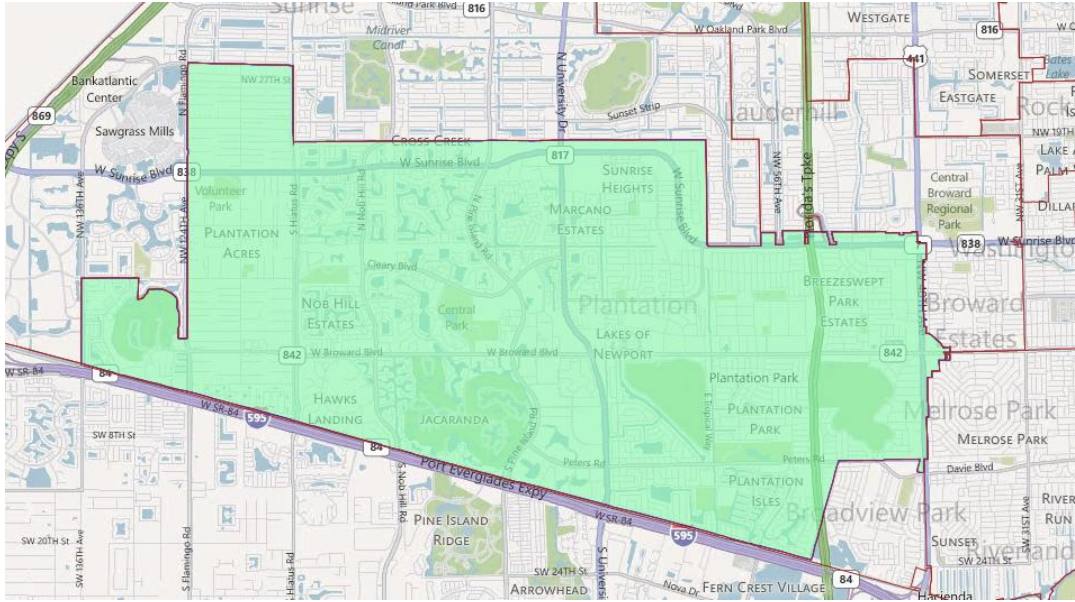
SE-20: Keep the City of Plantation Whole

Description: Our city is divided. We would like you to respect us and our compactness.⁷ Some cities are so gerrymandered I feel bad for their residents. Plantation has five House members.⁸

Visual: Keeping the City of Plantation Whole within a District would look like this:

⁷ Peter Tingem

⁸ Nicolas Steffans of



Policy Issues:

- With a population of 84,955, the City of Plantation is too small to meet the ideal population for a House district. It would need 71,722 people from other communities added to it in order to be complete.
- Using the city's boundaries as a legislative district would result in the splitting of several VTDs.