

Clewiston Public Input Meeting
September 1, 8 a.m.
Post-Public Input Meeting Report

The purpose of this document is to summarize specific district map-drawing suggestions from the Clewiston public meeting on September 1, 2011. Therefore, the comments in this document will focus on specific instructions provided by Florida residents participating in these meetings.

Other comments that were either not specific on how to draw a map or that were editorial in nature will not be included in this document. For all of the comments in their entirety, please see the meeting transcript, video and/or podcast via www.floridaredistricting.org.

The following encapsulates comments from persons who spoke and/or submitted written comments for the Lehigh Acres public meeting. To make it clear, these are the public's suggestions. This document does not necessarily reflect the opinion of the Florida Legislature.

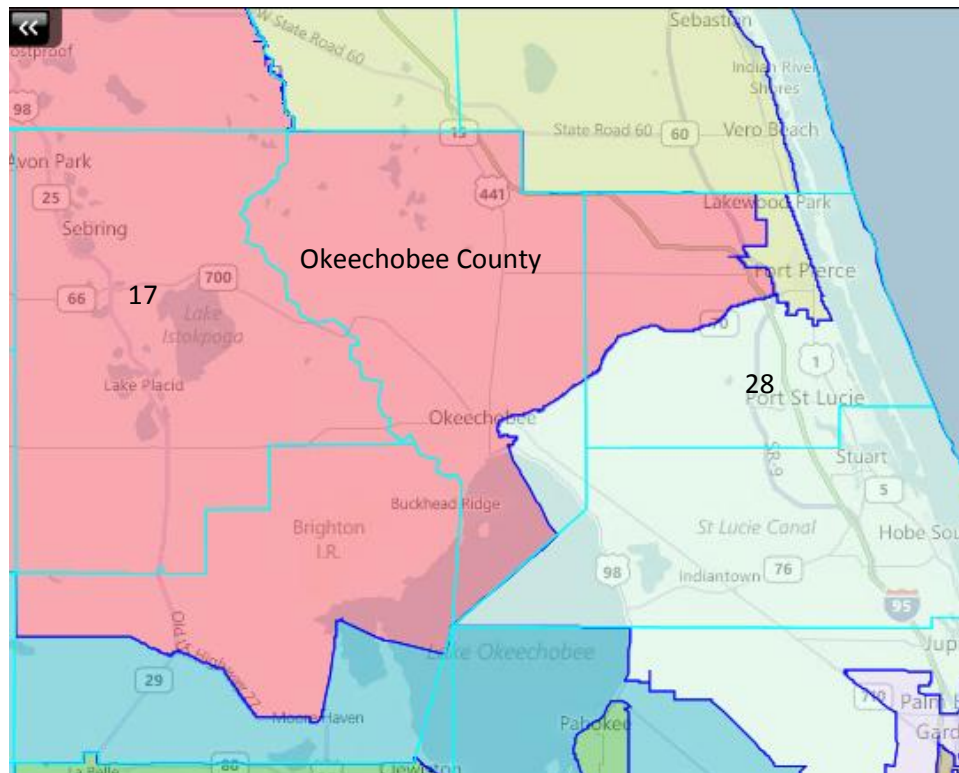
Specific Map-Drawing Testimony-Clewiston Acres Public Hearing

September 1, 2011

SW-35: Keep Current Boundaries for Okeechobee County

Description: In Okeechobee County, we have the Treasure Coast area but also have roots predicated in agriculture and Central Florida values. We believe that our current districts are set up perfectly.¹

Visual: Currently, Okeechobee County is split like this on the Senate map:



Policy Issues:

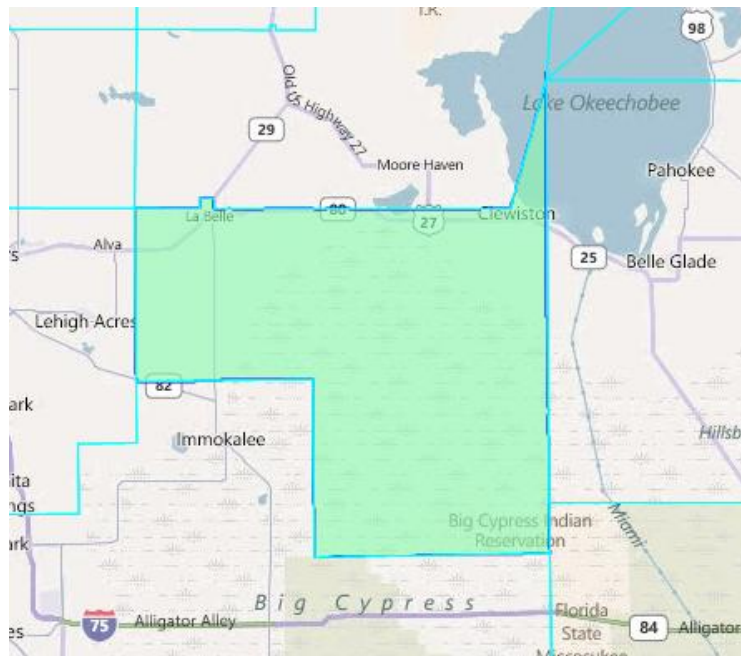
- With a population of 456,960, Senate District 17 is currently 13,072 people shy of the ideal population for a Senate district. Conversely, Senate District 28 has a population of 545,085, which is 75,053 people over the ideal population.

¹ Brian Whitehall of Okeechobee

SW-36: Keep Hendry County Whole

Description: Hendry County should remain whole in whatever district that we end up in.² We would like to have representation from people who actually live here. Please keep us whole in a district.³ We are now split into two Congressional districts and we would like to remain whole as a community.⁴

Visual: Keeping Hendry County whole within a district would look like this:



Policy Issues:

- With a population of 39,140, Hendry County is too small to meet the ideal population for a House, Senate or Congressional district and more communities would need to be added to it to complete the district.

SW-31: Keep the Boundaries of House District 77

Description: House District 77 should retain its characteristics of representing the central area of the state.⁵

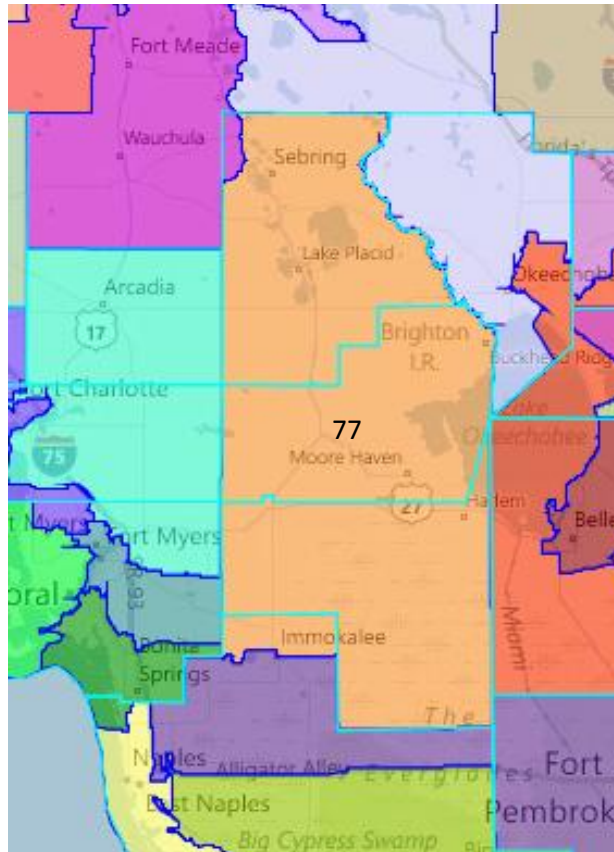
Visual: Currently, House District 77 looks like this:

² Paul Puletti, Mayor, City of LaBelle

³ Deborah Misotti of Clewiston

⁴ Janet Taylor of the Hendry County Commission

⁵ Paul Puletti, Mayor, City of LaBelle



Policy Issues:

- With a population of 147,455, House District 77 is currently 9,222 short of the ideal population for a House district.

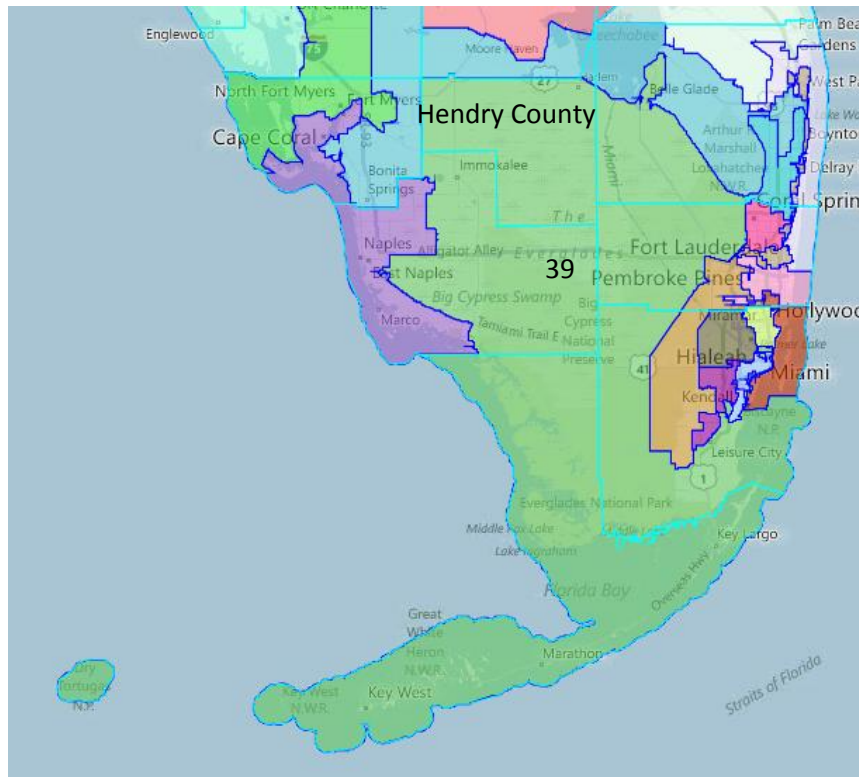
SW-32: Remove Hendry County from Senate District 39

Description: We would prefer to not be included in Senate District 39m but rather a Senate district that represents center parts of the state.⁶ Our Senate district has always been attached to the coast. I do not believe that you can fairly represent a district that is over seven hours from one end to the other. We have nothing in common with the other communities in the district and want to be with like-minded communities.⁷

Visual: Currently, Senate District 39 in Hendry County looks like this:

⁶ Paul Poletti, Mayor, City of LaBelle

⁷ Joseph Spratt of LaBelle



Policy Issues:

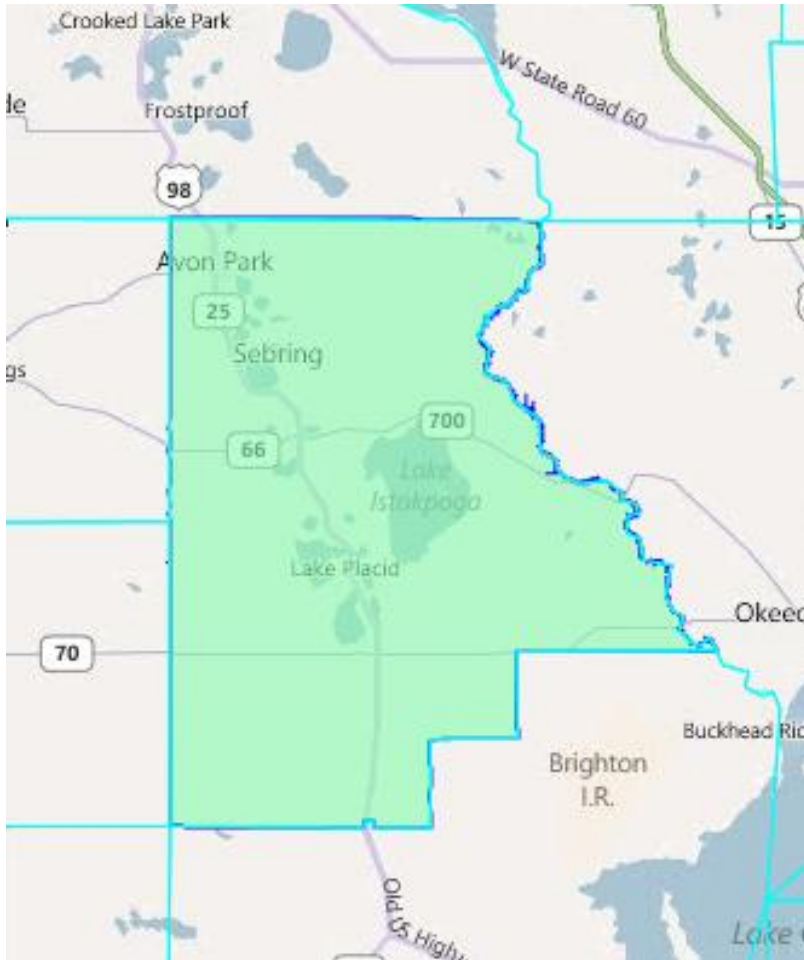
- With a population of 483,183, Senate District 39 is too large for the ideal population for a district. It needs to lose 13,151 people in order to be complete.

SW-33: Keep Highlands County Whole

Description: I want to see Highlands County be in one district. It is a rural area that doesn't have anything in common with the coastal districts. We can be connected with Glades or DeSoto County.⁸

Visual: Keeping Highlands County whole would look like this:

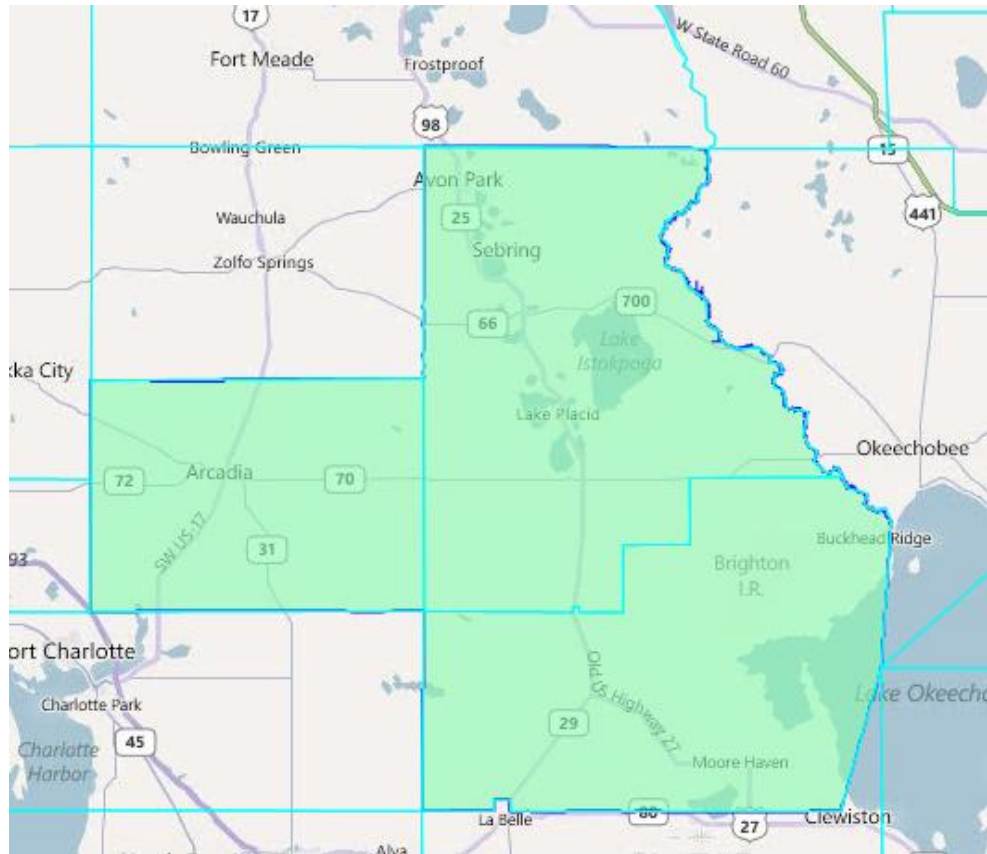
⁸ Terry Koopman of Lake Placid



Policy Issues:

- With a population of 98,786, Highlands County is too small to meet the ideal population for a House, Senate or Congressional district. More communities would need to be added to it.

Visual: A district that combined all of Highlands, Glades and DeSoto Counties would look like this:



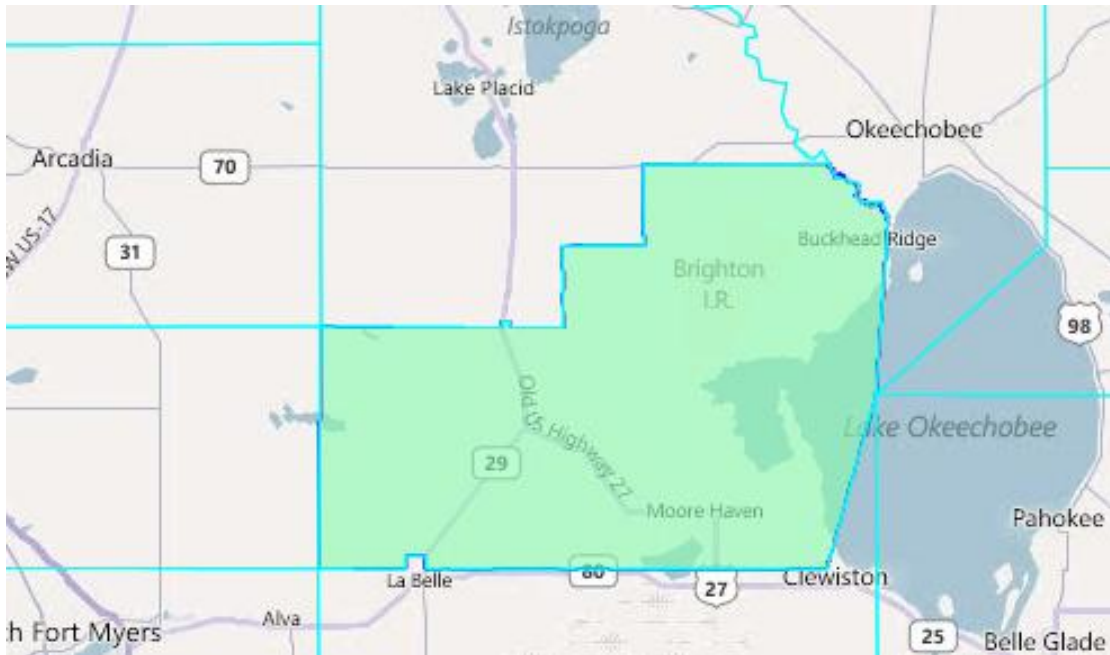
Policy Issues: With a population of 146,532, the district above is too small to meet the ideal population for a House, Senate or Congressional district and more communities would need to be added to it.

SW-40: Keep Glades County Whole in a Senate District

Description: We are divided in our Senate districts and we would like to be made whole. We identify with rural counties such as Hardee, Hendry, DeSoto and Okeechobee.⁹

Visual: Keeping Glades County whole in a Senate district would look like this:

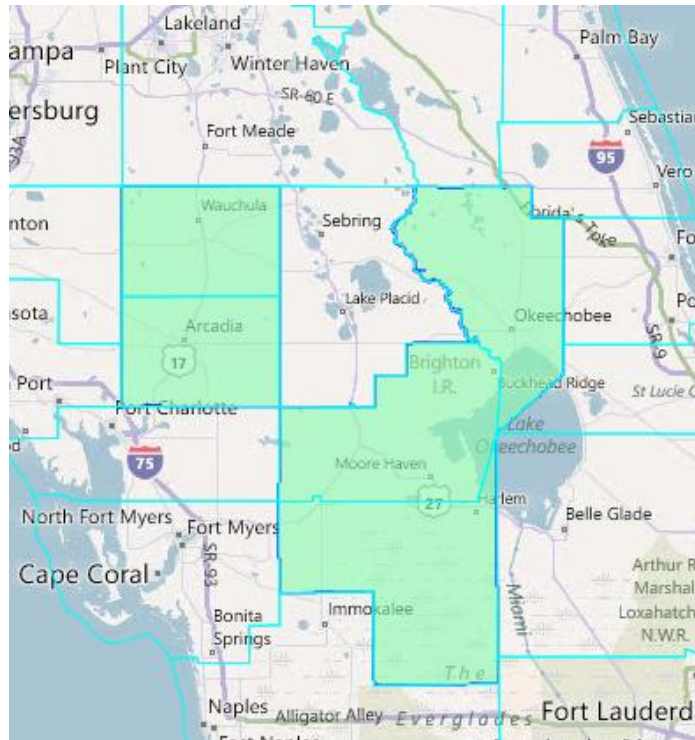
⁹ Donna Storter of the Glades County Commission



Policy Issues:

- With a population of 12,884, Glades County is too small to meet the ideal population of a Senate district. More communities would need to be added to it in order to complete a district.

Visual: A Senate district made up of Glades, Hardee, Hendry, DeSoto and Okeechobee Counties would look like this:



Policy Issues:

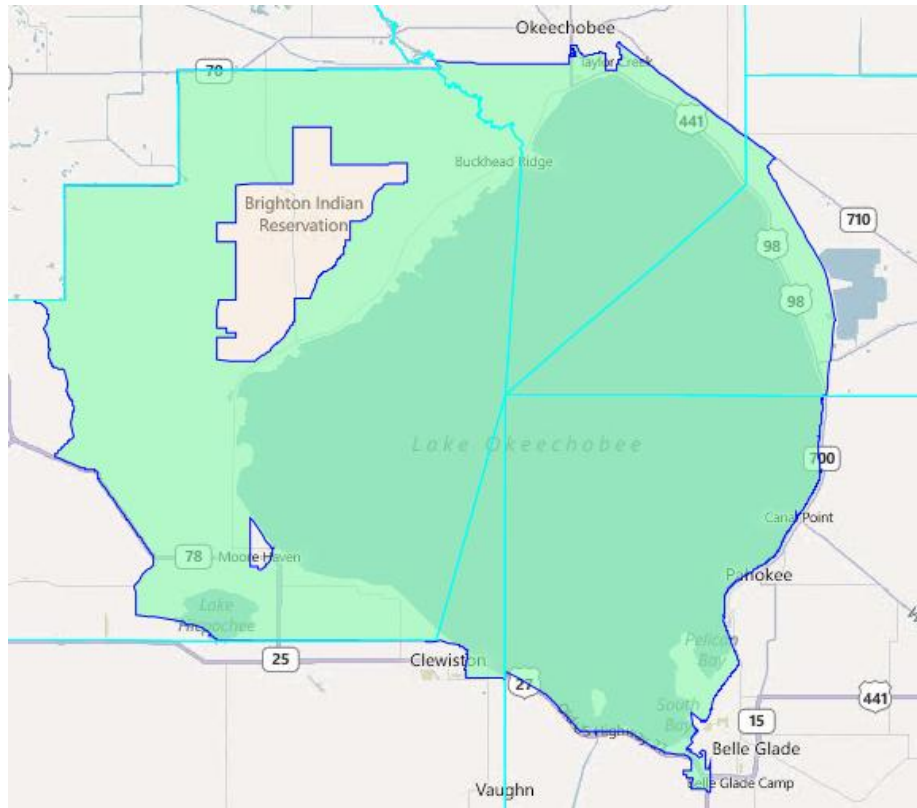
- With a population of 154,613, the district shown above is too small to meet the ideal population for a Senate district and more counties or communities would need to be added to it.
- The district above shows two non-contiguous areas of land joined at the point where Glades and DeSoto Counties meet. More area of land would need to be added to that area of the district in order for it to be contiguous.

SW-41: Keep Lake Okeechobee Whole Within a District

Description: This area has Lake Okeechobee at the heart of our industries. Because of this common interest, Lake Okeechobee should be encompassed in one House, Senate and Congressional district.¹⁰

Visual: Using VTDs, keeping Lake Okeechobee whole within a district would look like this:

¹⁰ Ashley Tripp Belle Glade



Policy Issues:

- With a population of 20,615, the district drawn above is too small to meet the ideal population for a House, Senate or Congressional district. More communities would need to be added to it in order for the district to be complete.
- Using just the VTDs that have any portion of Lake Okeechobee creates holes with the district that would need to be addressed.
- The district above would be located within five counties (Okeechobee, Martin, Palm Beach, Hendry and Glades).