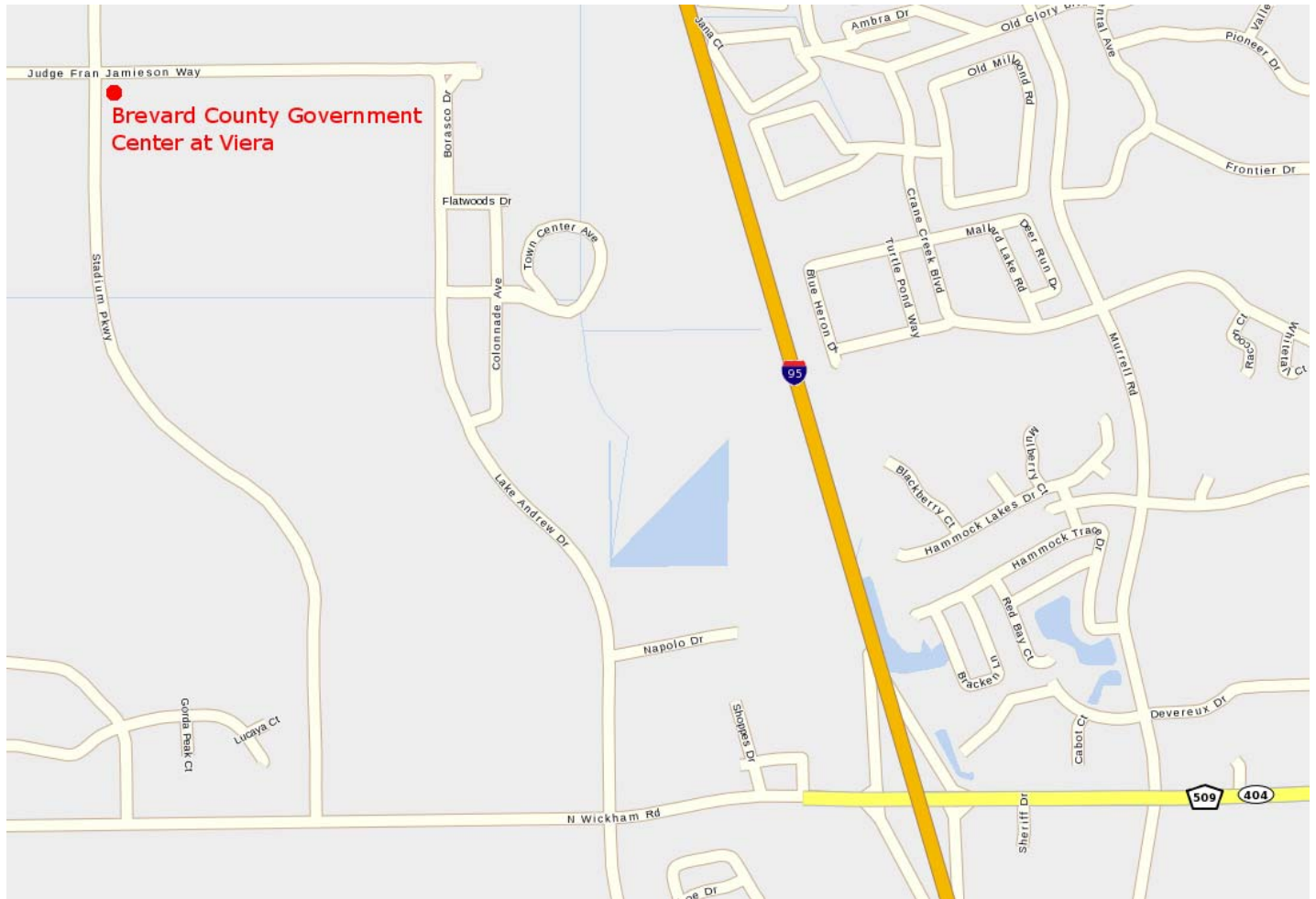


## Location / Directions to the Brevard County Government Center at Viera Reapportionment/Redistricting Hearing: July 28, 2011 from 10:00 AM-1:00 PM



### Location:

The Brevard County Government Center is located on the corner of Judge Fran Jamieson Way and Stadium Way. The street address is 2725 Judge Fran Jamieson Way, Viera, FL 32940. The hearing will be held in Building C, on the first floor, in the Commission Room.

### Directions:

From I-95: Take exit 191 toward Satellite Beach/Patrick A.F.B/Brevard Country 509. Turn right onto N. Wickham Rd. and head west. After continuing through the traffic circle, turn right onto Stadium Pkwy. Make a right onto Judge Fran Jamieson Way. The Brevard County Government Center will be on the right.

### Parking:

Parking is available in the Brevard County Government Center parking lots. Disabled parking is available in marked spaces.

If a special accommodation is needed (such as sign language, translation services or other accommodations) to participate in the meetings, please notify the Senate Sergeant's Office at (850) 487-5224 or the House Redistricting Committee at (850) 488-3928 at least five (5) business days before the meeting so that accommodations may be made.